

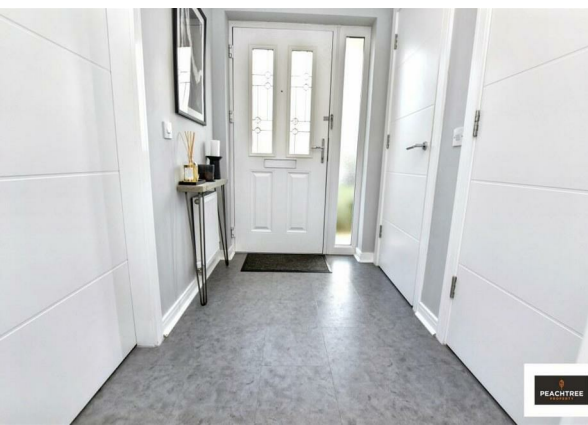
15C Brown Street, Renfrew, PA4 8HW

Offers Over £209,995

EPC Rating: C Council Tax Band: E



**PEACHTREE**  
PROPERTY

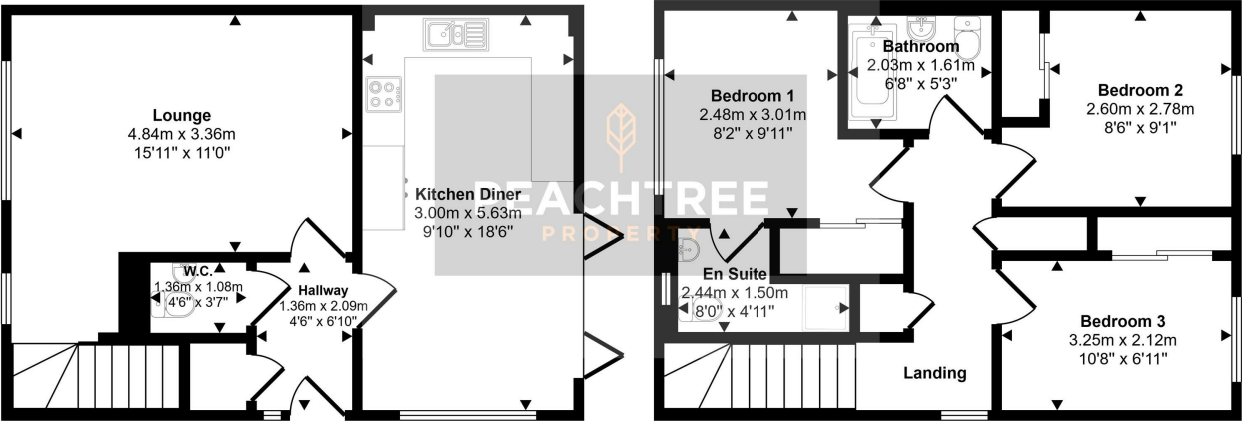


Peachtree Property are delighted to welcome to the market in well-appointed order this three-bedroom end terraced villa located in a popular Renfrew location close to Robertson Park.



28 Hairst Street Hairst St  
 Renfrew  
 PA4 8QY  
 0141 577 1111  
 info@peachtreeproperty.co.uk

Approx Gross Internal Area  
 91 sq m / 980 sq ft



Ground Floor  
 Approx 45 sq m / 484 sq ft

First Floor  
 Approx 46 sq m / 496 sq ft

This floorplan is only for illustrative purposes and is not to scale. Measurements of rooms, doors, windows, and any items are approximate and no responsibility is taken for any error, omission or mis-statement. Icons of items such as bathroom suites are representations only and may not look like the real items. Made with Made Snappy 360.

Energy Efficiency Rating		Current	Potential
Very energy efficient - lower running costs			
(92 plus) <b>A</b>			
(81-91) <b>B</b>		80	80
(69-80) <b>C</b>			
(55-68) <b>D</b>			
(39-54) <b>E</b>			
(21-38) <b>F</b>			
(1-20) <b>G</b>			
Not energy efficient - higher running costs			
<b>Scotland</b>	EU Directive 2002/91/EC		