



Living
made
better

City Peninsula
Greenwich, SE10 0FP



£2,200 PCM

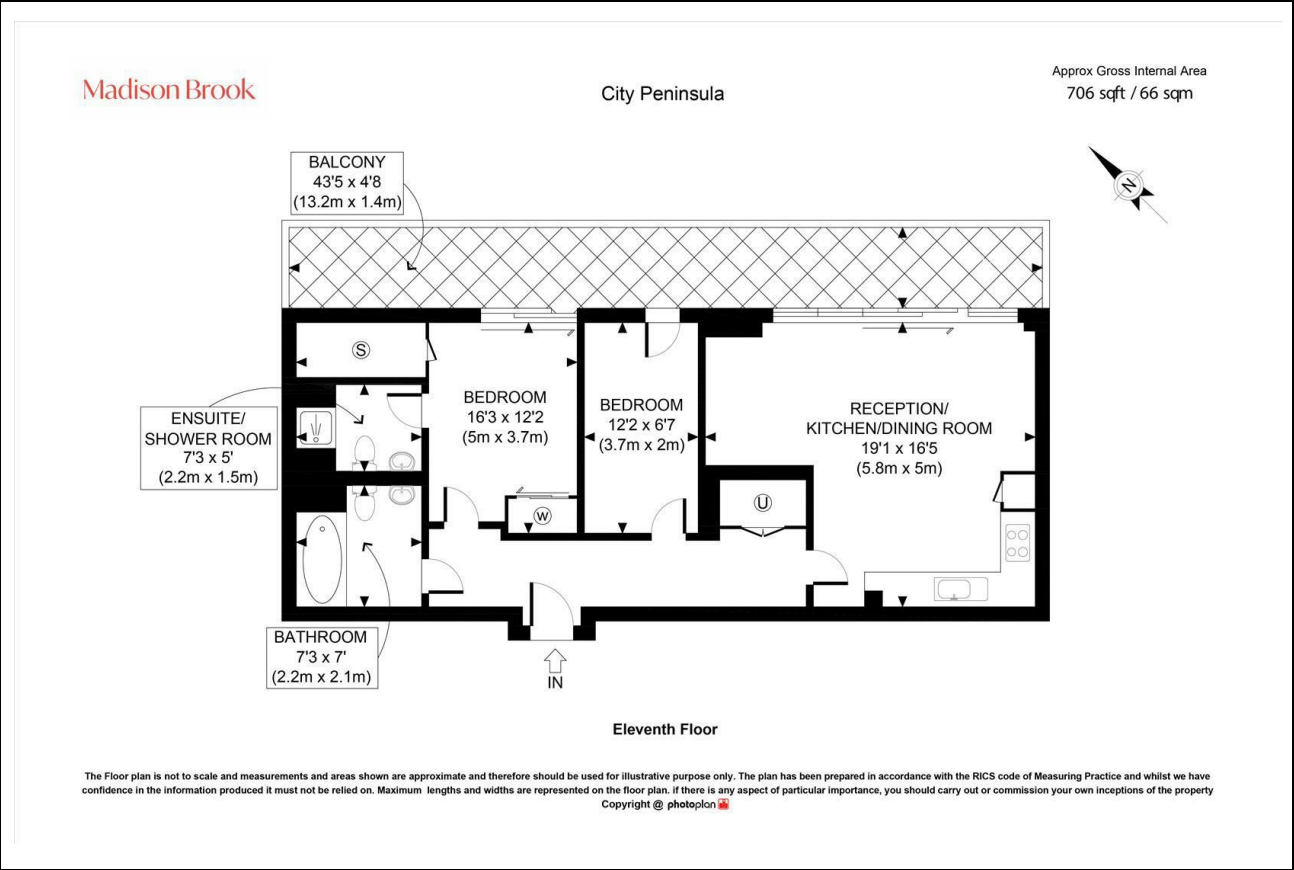
City Peninsula, Greenwich, SE10 OFP

Madison Brook

Property Summary

Located on the 11th floor of City Peninsula, this furnished two-bedroom apartment offers approximately 706 sq. ft. of bright, open-plan living space with a generous private balcony. The property includes a principal bedroom with en-suite shower room, a second bedroom, and a separate modern family bathroom, with concierge service and excellent access to the station, town centre and local amenities.

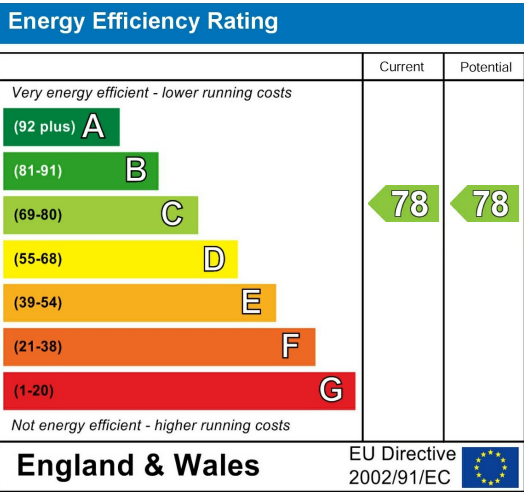
Floorplan



Area Map



Energy Efficiency Graph



These particulars, whilst believed to be accurate are set out as a general outline only for guidance and do not constitute any part of an offer or contract. Intending purchasers should not rely on them as statements of representation of fact, but must satisfy themselves by inspection or otherwise as to their accuracy. No person in this firms employment has the authority to make or give any representation or warranty in respect of the property.

43 Loampit Vale, Lewisham, London, SE13 7FT
Tel: 020 3946 6200 Email:
lewisham@madisonbrook.com
<https://madisonbrook.com/>