



strawberry
co.

21c Furzewood Road, Bristol
Bristol

In Excess of £425,000



21c Furzewood Road

Bristol, Bristol

Spacious four-bed end-terrace with modern kitchen, wood burner, stylish bathrooms, off-street parking, garage, and private garden in a desirable, tucked-away location.

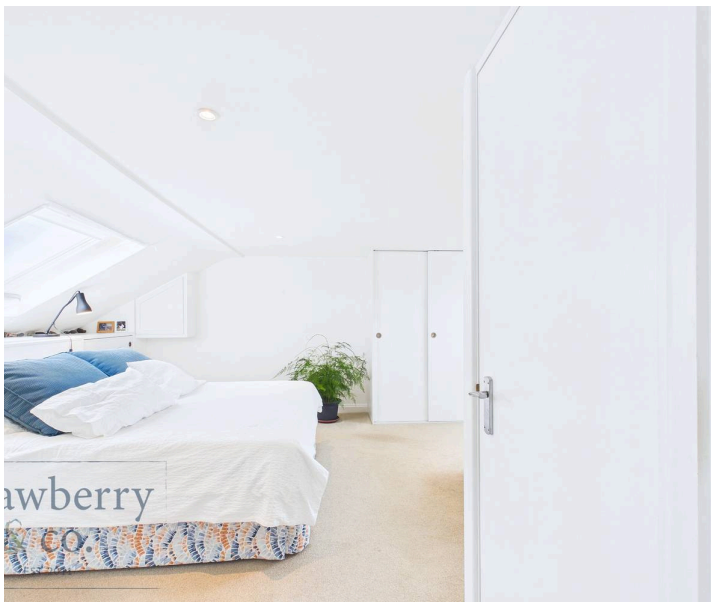
Council Tax band: C

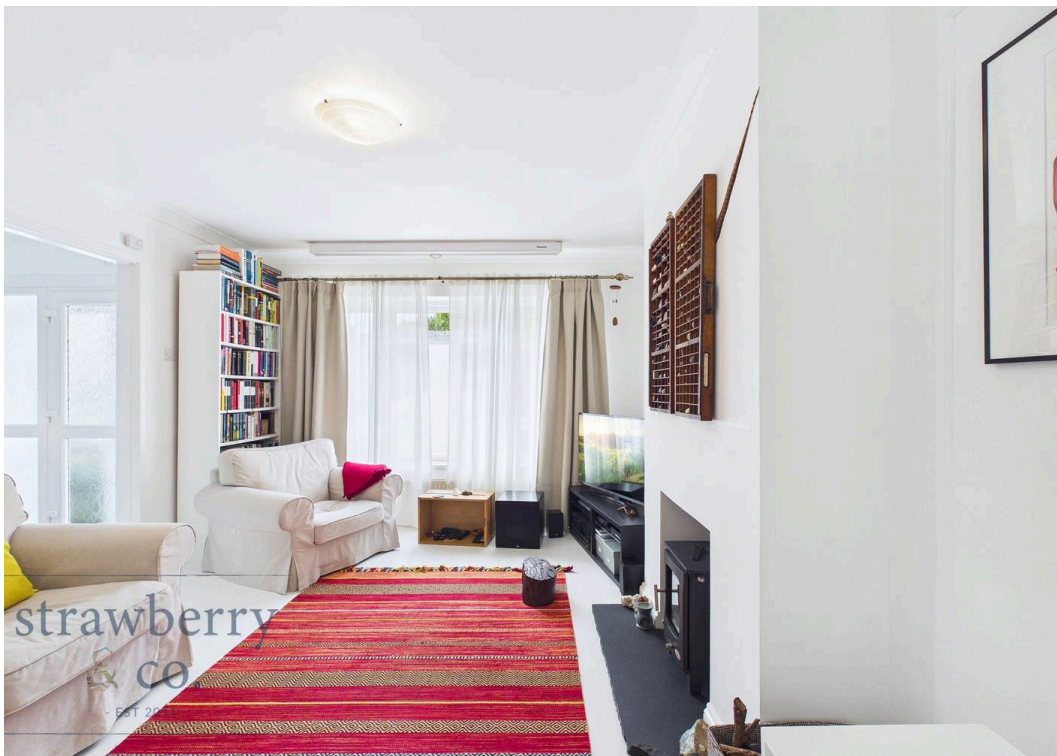
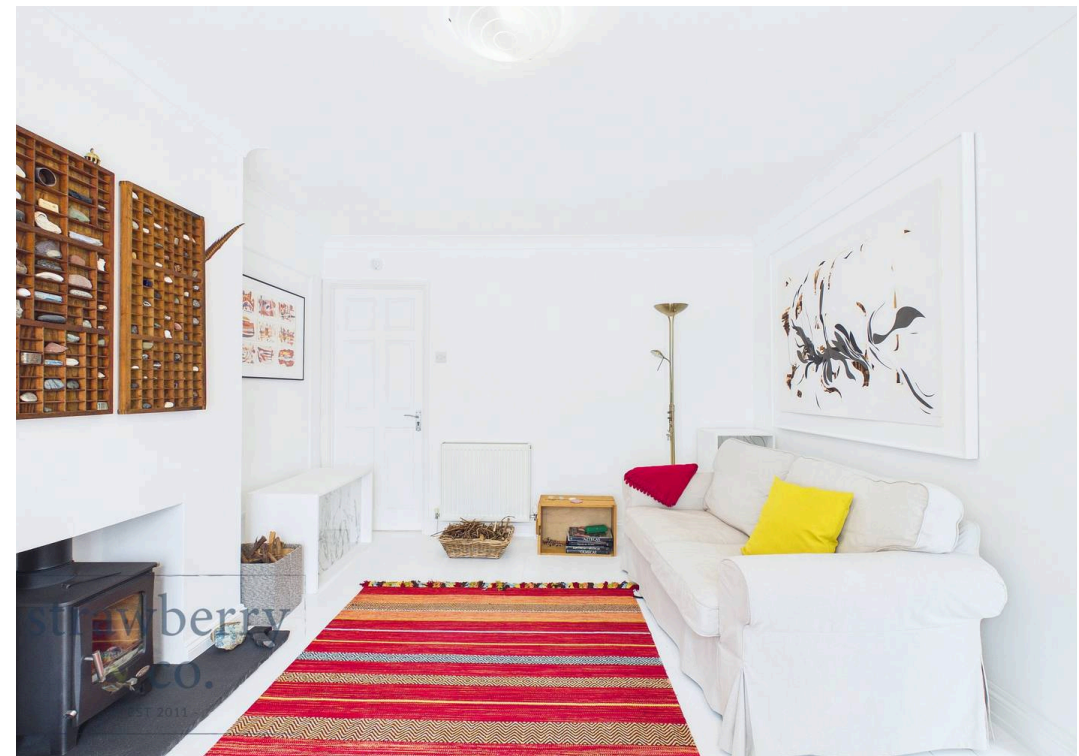
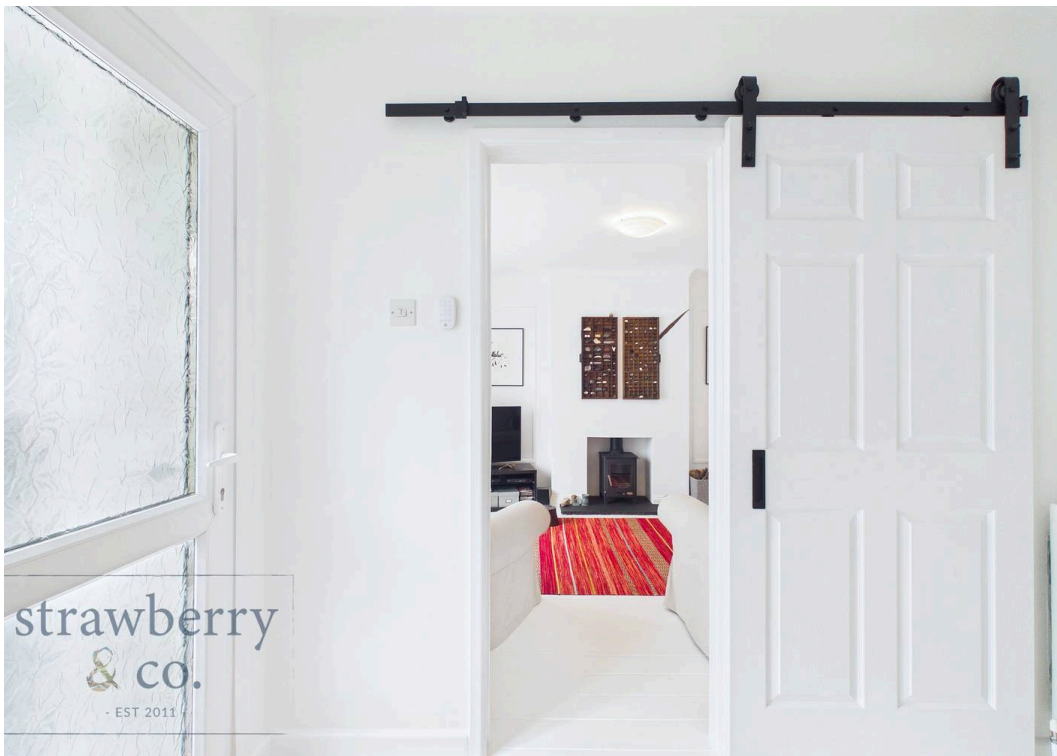
Tenure: Freehold

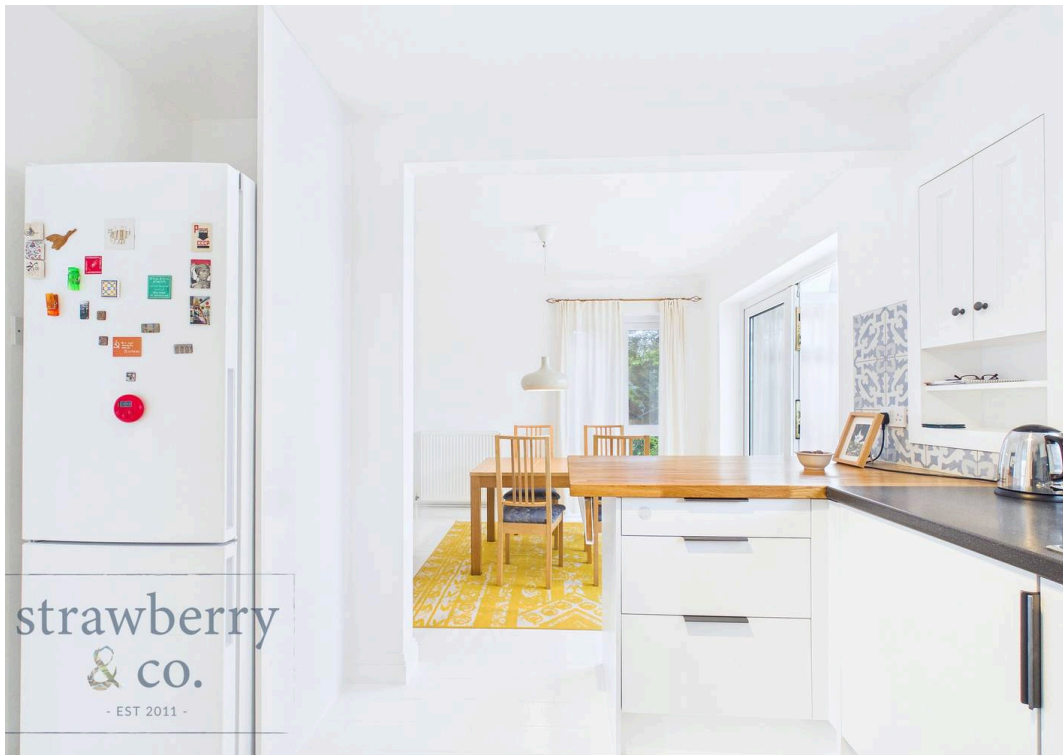
EPC Energy Efficiency Rating: D

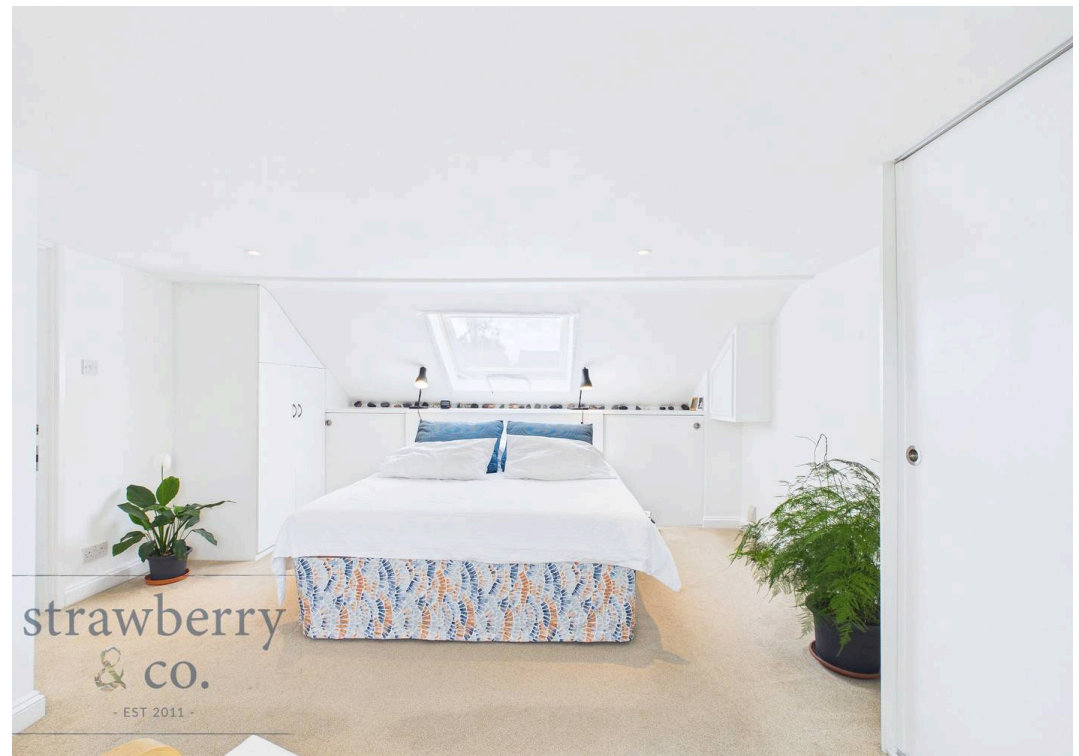
EPC Environmental Impact Rating: D

- EXTENDED
- FOUR BEDROOMS
- SET OVER THREE FLOORS
- NESTLED AWAY
- GARAGE
- CONTEMPORARILY KITCHEN AREA
- OFF STREET PARKING
- BEAUTIFULLY PRESENTED
- WOOD BURNER











strawberry
& co.
EST 2011



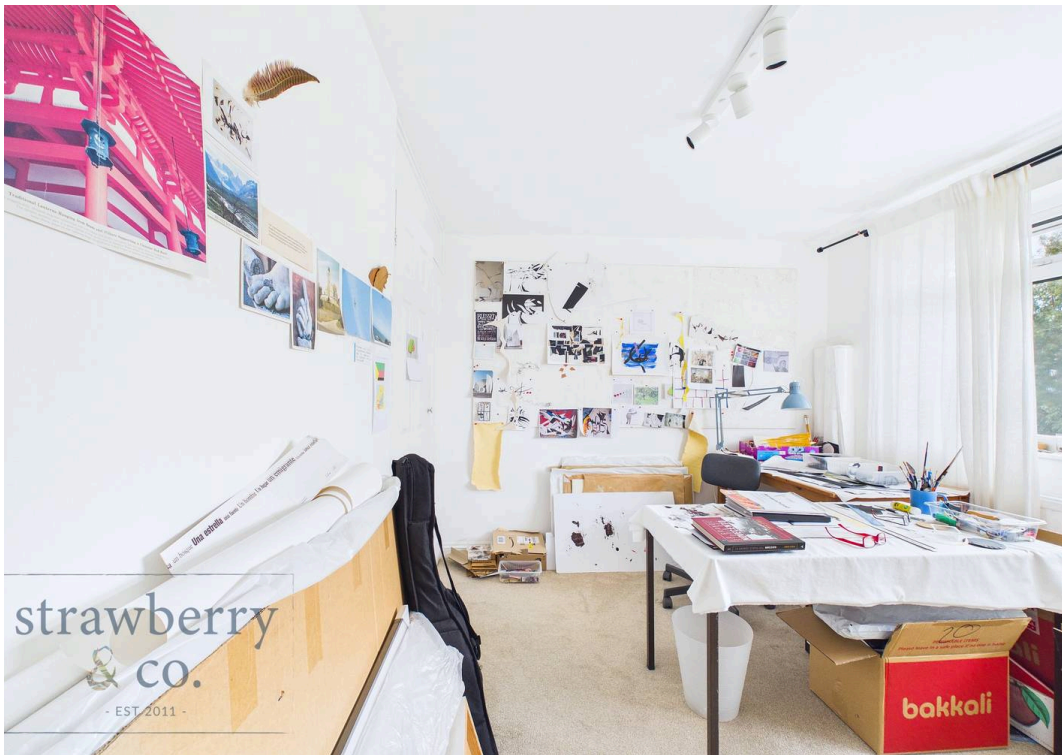
strawberry
& co.
EST 2011



strawberry
& co.
EST 2011

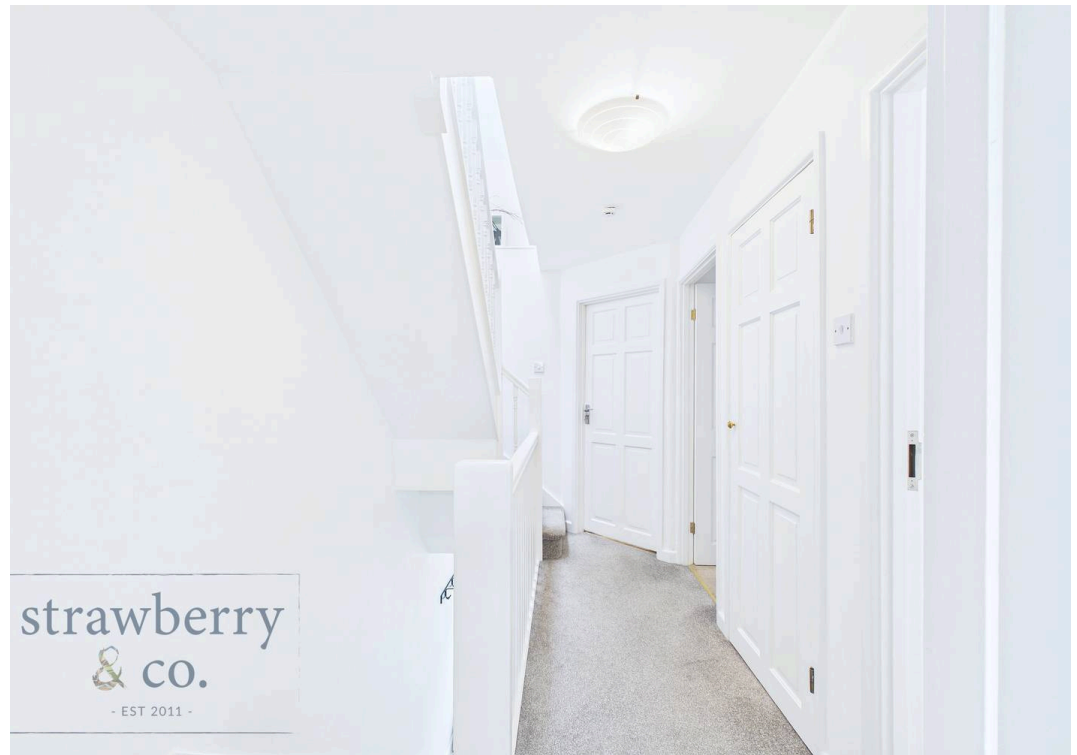


strawberry
& co.
EST 2011





strawberry
& co.
- EST 2011 -



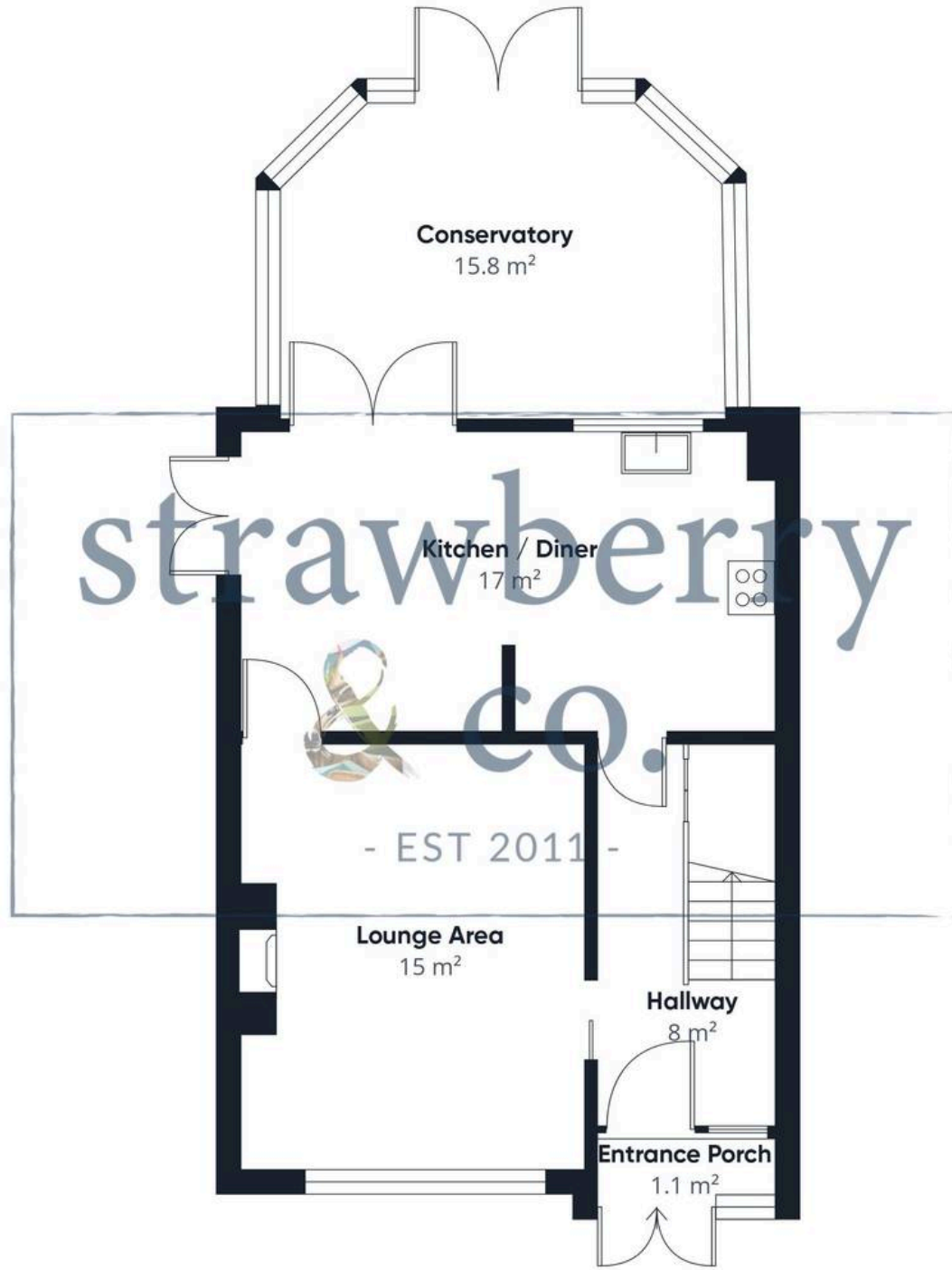
strawberry
& co.
- EST 2011 -



strawberry
& co.
- EST 2011 -







Conservatory
15.8 m²

Kitchen / Diner
17 m²

Lounge Area
15 m²

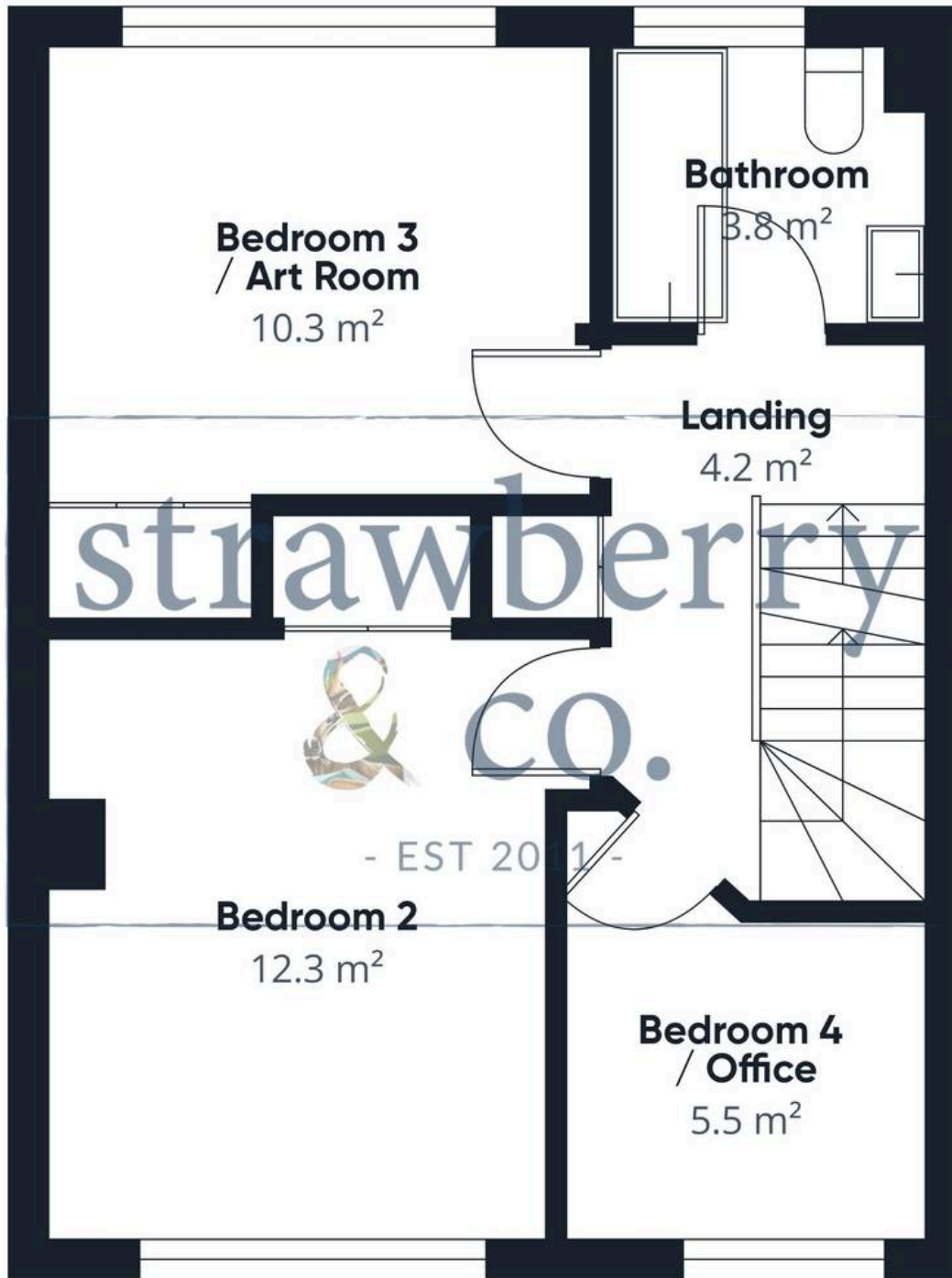
Hallway
8 m²

Entrance Porch
1.1 m²

strawberry
& co.
- EST 2011 -



Ground Floor



strawberry
& co.

- EST 2011 -



Floor 1



Floor 2



Strawberry & Co

Strawberry & Co, Studio 2.04b HERE, 470 Bath Road, Bristol - BS4 3AP

01174767660

hello@strawberryand.co

strawberryand.co/