



EARDLEY ROAD, SW16

£425,000

- Two double bedrooms
- Victorian conversion
- South facing terrace
- Close to transport links
- Excellent condition
- Energy rating: C





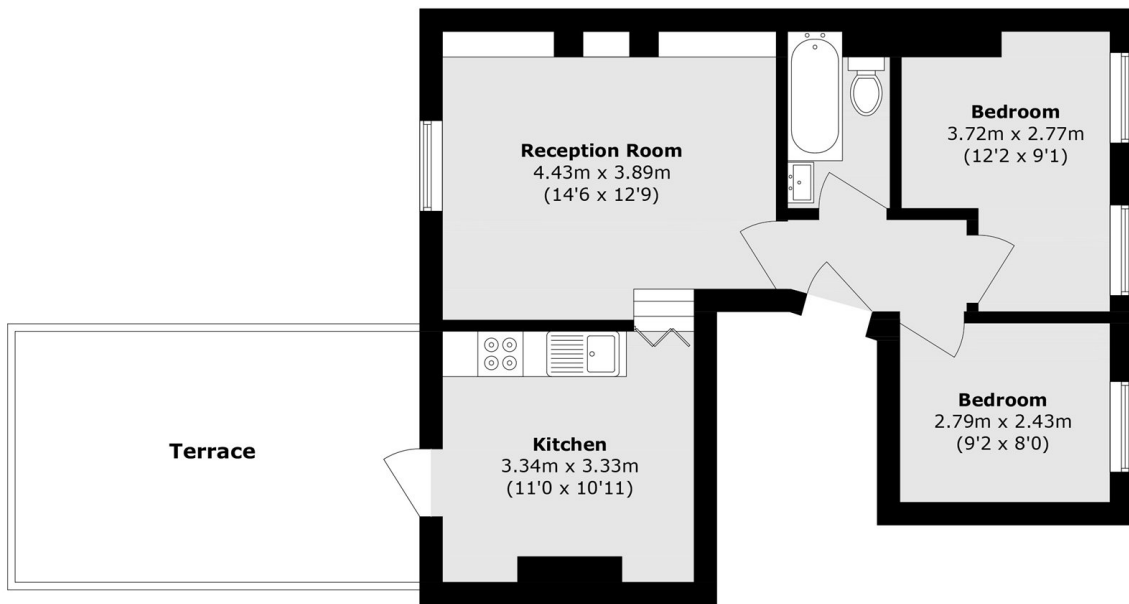
ABOUT THE HOME

A beautifully presented two-bedroom flat located on the first floor of a Victorian conversion. Situated in the borough of Wandsworth, this wonderful home benefits from a south-facing private terrace and is in excellent condition throughout.

Eardley Road is situated within close proximity to Streatham Common and Streatham train stations, with regular services to London Bridge and London Victoria via Clapham Junction. There are also good bus connections to Tooting Broadway and Tooting Bec tube stations. This location is well served by local independent shops, pubs, restaurants and cafes, with the green open spaces of Streatham Common & Tooting Bec Common also close by.







Total area (approx.): 51.4 sq. m (553.2sq. ft)
Terrace (approx.): 17.8 sq. m (191.5 sq. ft)

JACKSONS STREATHAM

1-3 De Montfort Parade,
Streatham High Road,
Sales: 020 8487 3179
Lettings: 020 8487 3180

Energy Rating: C We aim to make our particulars both accurate and reliable. However they are not guaranteed; nor do they form part of an offer or contract. If you require clarification on any points then please contact us, especially if you're traveling some distance to view. Please note that appliances and heating systems have not been tested and therefore no warranties can be given as to their good working order.