



RUDLOE ROAD, SW12

£750,000

- Two double bedrooms
- Newly and fully refurbished
- Open plan
- Private garden
- Share of freehold
- Energy rating: C





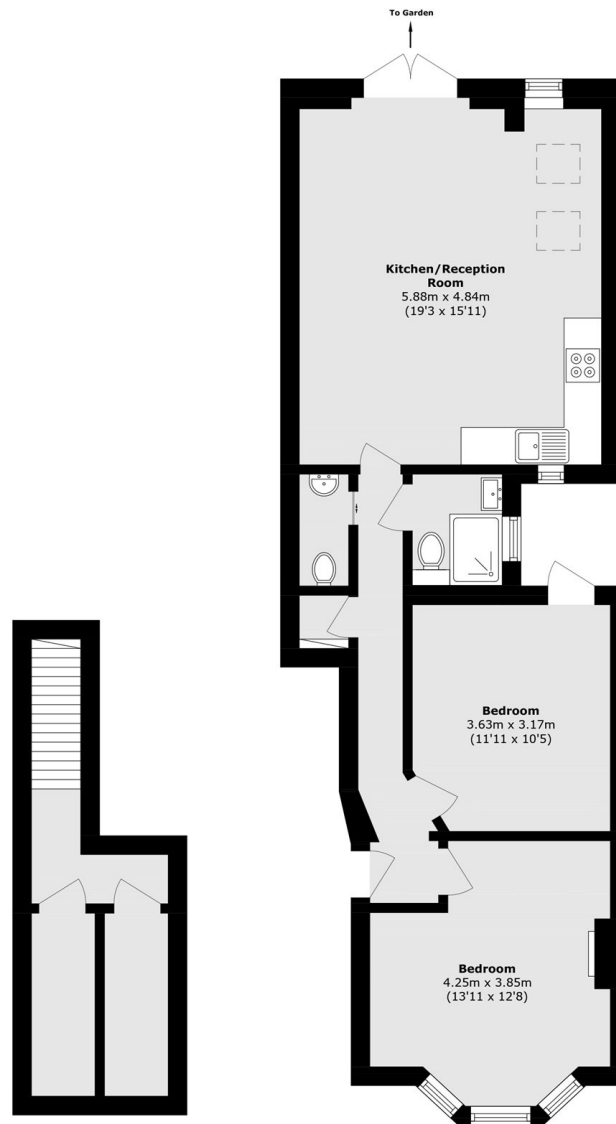
ABOUT THE HOME

A ground floor Victorian conversion flat that has been renovated throughout by the current owner. This well presented property offers two double bedrooms, a modern bathroom and an additional wc, with a large open plan kitchen/living space to the rear with doors out to a private garden. The flat is offered chain free and with a share of the freehold and also has excellent storage in the cellar.

Rudloe Road is a tree lined residential street moments from the popular Abbeville Village with its many local shops, restaurants and cafés. Clapham Common and Clapham South Station (Northern Line) are also within easy reach.





**Basement****Ground Floor**

Total area (approx.): 78.5 sq. m (844.9 sq. ft)
(Including Basement)

JACKSONS BALHAM

8-11 Balham Station Road,
London, SW12 9SG
Sales: 020 8675 6555
Lettings: 020 8675 6565

Energy Rating: C We aim to make our particulars both accurate and reliable. However they are not guaranteed; nor do they form part of an offer or contract. If you require clarification on any points then please contact us, especially if you're traveling some distance to view. Please note that appliances and heating systems have not been tested and therefore no warranties can be given as to their good working order.