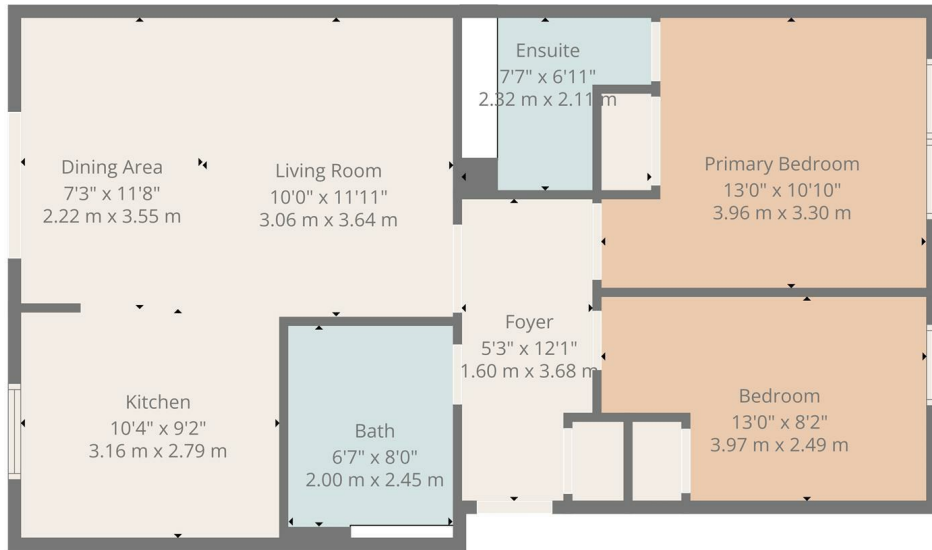




OFFERS OVER
£120,000
Silverbanks Court
Glasgow, G72 7FN



TOTAL: 727 sq. ft, 68 m²
 Ground floor: 727 sq. ft, 68 m²
 EXCLUDED AREAS: WALLS: 58 sq. ft, 5 m²

Floor Plan Created By Cubicasa App. Measurements Deemed Highly Reliable But Not Guaranteed.



Energy Efficiency Rating		Current	Potential
Very energy efficient - lower running costs			
(92 plus) A			
(81-91) B			
(69-80) C			
(55-68) D			
(39-54) E			
(21-38) F			
(1-20) G			
Not energy efficient - higher running costs			
Scotland		83	83
		EU Directive 2002/91/EC	



Agents Note: Whilst every care has been taken to prepare these particulars, they are for guidance purposes only. All measurements are approximate and are for general guidance purposes only and whilst every care has been taken to ensure their accuracy, they should not be relied upon and potential buyers/tenants are advised to recheck the measurements

	OFFICE ADDRESS 376 Brandon Street Motherwell North Lanarkshire ML1 1XA	OFFICE DETAILS 01698 263413 enquiries@hemmingshomes.co.uk hemmingshomes.co.uk
	<p>HEMMINGS HOMES</p>	