



13 Spurway Road



13 Spurway Road

Tiverton, Devon, EX16 4ER

Town Centre 1 Mile | M5 (J27)/ Tiverton Parkway 6.5 Miles | Exeter 15 miles

An immaculately presented two-bedroom semi-detached bungalow located in a popular residential area, offered to the market with no onward chain.

- Two Bedroom Bungalow
- Recently Modernised
- Driveway Parking
- Spacious Garden
- Council Tax Band: C
- Immaculately Presented
- No Onward Chain
- Garage
- Short Walk to Town Centre
- Freehold

Guide Price £295,000

DESCRIPTION

13 Spurway Road is a beautifully presented two-bedroom semi-detached bungalow offered to the market with no onward chain, within easy reach of the Great Western Canal tow path offering miles of delightful walking and the opportunity to observe the associated wildlife.

Tiverton has an excellent range of shopping, banking, recreational, healthcare and educational facilities including Blundell's School, which offers discounted fees to local students. There is easy access from Tiverton to the M5 at Junction 27, alongside which lies Tiverton Parkway Railway Station.

The property has been recently modernised by the current owners with two double bedrooms, a large sitting room and modern kitchen which leads out to the rear garden. Both the rear and front gardens are laid to lawn, bordered by mature plants and shrubbery, the property benefits from off street parking, a garage and a useful outbuilding, coupled with a garden room.

SERVICES

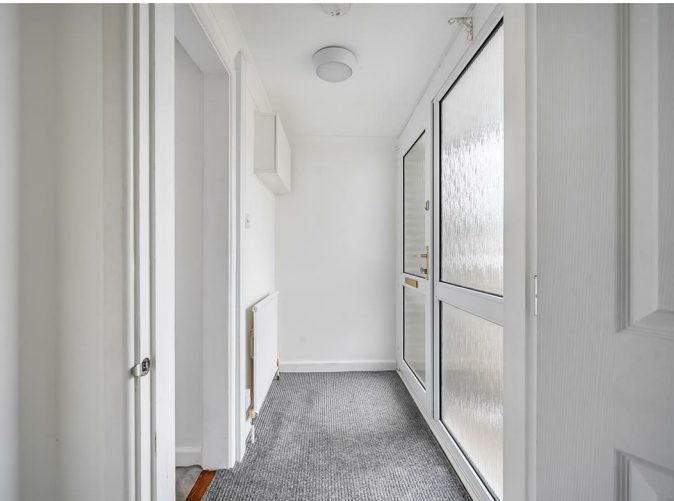
Mains electricity, water, gas & drainage. Gas Central Heating.
Ofcom predicted broadband services – Standard & Superfast broadband available.
Ofcom predicted mobile coverage: External - EE, Three, O2 and Vodafone.
Local Authority: Mid Devon Council.

DIRECTIONS

What3Words:///aspect.rips.heave

Google Drop Pin: <https://maps.app.goo.gl/NqRM6kt46j8DN7f7A>





IMPORTANT: Stags gives notice that: 1. These particulars are a general guide to the description of the property and are not to be relied upon for any purpose. 2. These particulars do not constitute part of an offer or contract. 3. We have not carried out a structural survey and the services, appliances and fittings have not been tested or assessed. Purchasers must satisfy themselves. 4. All photographs, measurements, floorplans and distances referred to are given as a guide only. 5. It should not be assumed that the property has all necessary planning, building regulation or other consents. 6. Whilst we have tried to describe the property as accurately as possible, if there is anything you have particular concerns over or sensitivities to, or would like further information about, please ask prior to arranging a viewing.



Approximate Area = 668 sq ft / 62 sq m
 Garage = 140 sq ft / 13 sq m
 Outbuildings = 113 sq ft / 10.4 sq m
 Total = 921 sq ft / 85.4 sq m

For identification only - Not to scale

Ground Floor

Garage / Outbuilding 1 / 2

Floor plan produced in accordance with RICS Property Measurement 2nd Edition, Incorporating International Property Measurement Standards (IPMS2 Residential). © nichecom 2026. Produced for Stags. REF: 1455841



Energy Efficiency Rating		Current	Potential
Very energy efficient - lower running costs			
(92 plus)	A		
(81-91)	B		
(69-80)	C		
(55-68)	D		69
(39-54)	E		
(21-38)	F		
(1-20)	G		
Not energy efficient - higher running costs			
England & Wales		EU Directive 2002/91/EC	

19 Bampton Street, Tiverton,
Devon, EX16 6AA

tiverton@stags.co.uk
01884 235705