



CLEMENTS  
HABBA



For Sale



Saville Road, Chiswick, London

£1,400,000

Freehold







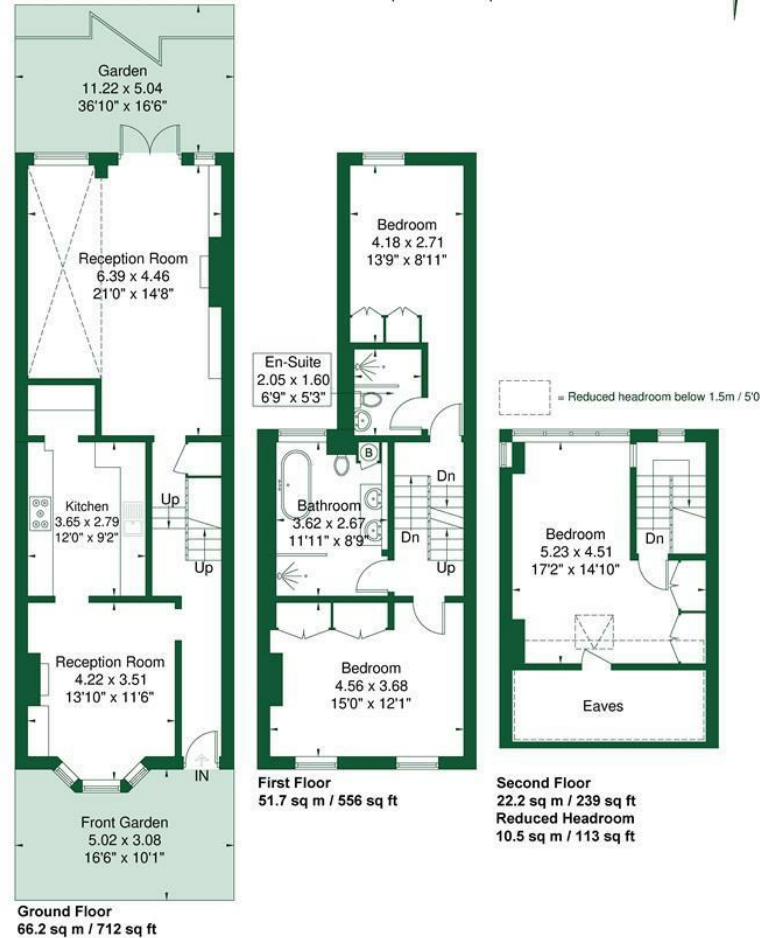
## Summary Description

A fantastic Period family home, subject to a full renovation in 2022 and finished to an unusually high standard throughout. Offering a large landscaped South facing garden, three bedrooms and a stunning center piece bathroom, allied to an excellent location, on the Bedford Park borders in desirable Chiswick.

- Fantastic Period Family Home
- Renovated Throughout To an Exceptional Standard
- Three Double Bedrooms, Two Bathrooms
- Bespoke Solid Wood Kitchen
- High Quality Joinery Throughout
- 1508 Sq Ft / 1621 Sq Ft ( including eaves )
- Sizeable Landscaped South Facing Garden
- Beautifully Appointed Large Family Bathroom
- Thoughtful Lighting Design
- Potential to Add Additional Room (STP)

# Saville Road

Approximate Gross Internal Area = 140.1 sq m / 1508 sq ft  
 Eaves / Reduced Headroom = 10.5 sq m / 113 sq ft  
 Total = 150.6 sq m / 1621 sq ft



Although every attempt has been made to ensure accuracy, all measurements are approximate.  
 The floorplan is for illustrative purposes only and not to scale.

© www.perspective.co.uk

