



Manchester Square
Marylebone, W1U





Introducing a charming two-bedroom property situated on the top floor of a modern block, nestled in a prestigious location on Manchester Square. This delightful residence offers spacious and comfortable living spaces, with thoughtfully designed features throughout.

The two bedrooms are generously proportioned and boast ample fitted storage, ensuring that there is plenty of room for all your belongings. The lounge is impressively sized and creates a bright and inviting atmosphere, accentuated by large windows that provide a fabulous view of the surroundings.

The separate kitchen is equipped with all the essential amenities one would expect, offering convenience and functionality. It is tastefully designed to a high standard, making meal preparation an enjoyable experience. The bathroom is equally impressive, with its spacious layout and contemporary fixtures and fittings, providing a luxurious touch to your daily routines.

This property is perfectly suited for a single professional or professional sharers seeking a comfortable and stylish living space. Available from mid-August, it presents an excellent opportunity to experience the best of city living.

- Wooden floor
- Lift
- 2 double bedrooms
- Separate Kitchen
- Top Floor

£4,250 pcm

Additional tenant charges apply (fees apply to non-AST tenancies only)

Tenancy Agreement Fee: £300

References per Tenant/Guarantor: £60

Inventory check (approx. £100 – £250 inc. VAT)

chestertons.co.uk/property-to-rent/applicable-fees

Energy Efficiency Rating		
Energy efficiency class (lower is better)	Current	Potential
92-100 A		
81-91 B		
69-80 C		
55-68 D		
49-54 E		
45-48 F		
35-39 G		
Not energy efficient - higher running costs		
England, Scotland & Wales		
EU Directive 2002/91/EC		

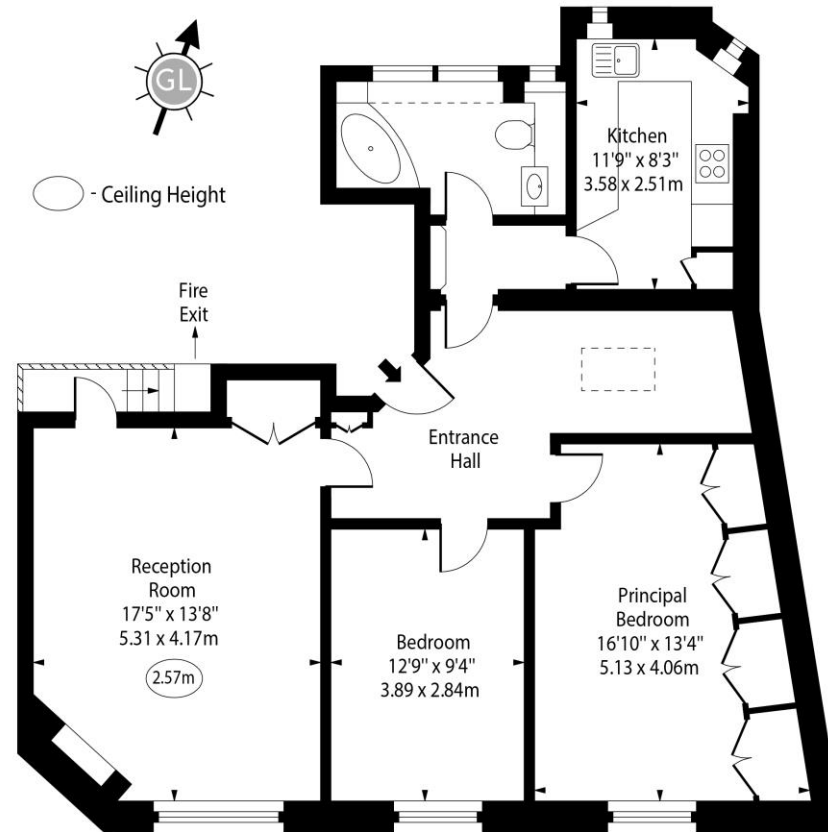
Minimum Term: 12 months
Deposit Required: Five weeks
Local Authority: City of Westminster
Council Tax Band: G
EPC Rating: D
Furnished, Unfurnished

Chestertons Hyde Park & Marylebone Lettings

40 Connaught Street
Hyde Park & Marylebone
London
W2 2AB

hydeparklettingsusers@chestertons.co.uk
02072985950

Manchester Square, W1U



Fourth Floor

Approx Gross Internal Area 910 Sq Ft - 84.54 Sq M

Every attempt has been made to ensure the accuracy of the floor plan shown. However, all measurements, fixtures, fittings, and data shown are approximate interpretations and for illustrative purposes only. Measured according to the RICS. Not To Scale.

www.goldlens.co.uk

Ref. No. 030172K

Chesterton UK Services Limited trading as Chestertons for themselves and for the vendor of this property whose agents they are, give notice that (i) these particulars do not constitute any part of an offer or contract, (ii) all statements contained within these particulars are made without responsibility on the part of Chestertons or the vendor, (iii) whilst made in good faith, none of the statements contained within these particulars are to be relied upon as a statement or representation of fact, (iv) any intending purchasers must satisfy themselves by inspection or otherwise as to the correctness of each of the statements contained within these particulars, (v) the vendor does not make or give either Chestertons or any person in their employment any authority to make or give representation or warranty whatsoever in relation to this property. Wide angle lenses may be used. ©Copyright Chestertons | Chesterton Global Ltd | Registered Office 40 Connaught Street, Hyde Park, London W2 2AB Registered Company Number 05334580.



This paper is
100% recyclable