



4B, Merchant Square,  
, W2

£980 Per Week,

NAPIER WATT

T: 0207 935 0011  
E: [enquiries@napierwatt.co.uk](mailto:enquiries@napierwatt.co.uk)  
W: [napierwatt.co.uk](http://napierwatt.co.uk)

35 Berkeley Square, Mayfair, London, W1J 5BF







## Description

Interior designed 2 bedroom, two bathroom apartment, set within the heart of the Paddington Basin and close to the popular West End Quay. The stunning apartment comprises spacious living (728 sq ft) and entertaining space with a beautiful reception room as well as a modern fully fitted, open plan kitchen, two bedrooms, two bathrooms (one en-suite) and ample storage space.

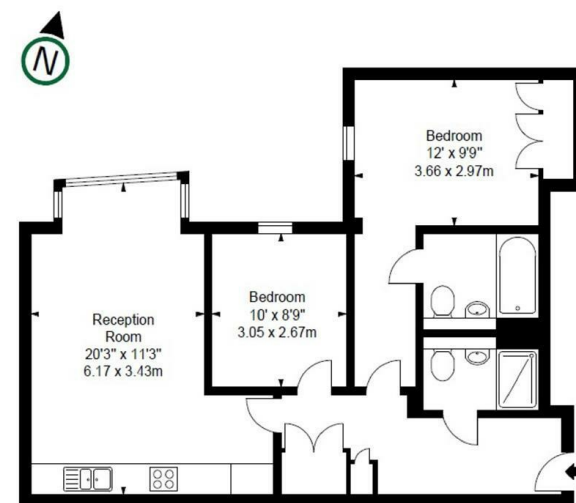
The apartment is situated on the fourth floor of this prestigious building which features 24 hour concierge, lift service, and secure underground parking.

## Key Features

- LIFT
- CONCIERGE SERVICE
- AVAILABLE FURNISHED OR UNFURNISHED
- CCTV
- PRIVATE UNDERGROUND PARKING
- FOUR MINUTE WALK FROM EDGEWARE ROAD UNDERGROUND STATION

## Terms

Additional costs will apply for; referencing (£36 per person & guarantor); administration (£240); renewal/extensions (£120); check-out inventory & cleaning (variable); special requests (variable). Security Deposits also apply to all tenancies.



<b>FLAT 410</b> <b>4B MERCHANT SQUARE EAST</b> <b>LONDON W2</b>	<b>Approx Gross Internal Area*</b> <b>728 Sq Ft - 67.63 Sq M</b>
<b>Fourth Floor</b>	

IMPORTANT: We would inform prospective purchasers that these sales particulars have been prepared as a general guide only. A detailed survey has not been carried out, nor the services, appliances and fittings tested. Room sizes should not be relied upon for furnishing purposes and are approximate. If floor plans are included, they are for guidance only and illustration purposes only and may not be to scale. If there are any important matters likely to affect your decision to buy, please contact us before viewing the property.