



Room 5

Cecil Street | | Watford | WD24 5AS

£950 Per Month



**LEAFY
ESTATES**

Key features

- Approximately 12–15 minutes walk to Watford Junction Station
- Large Double Ensuite Room To Rent - Watford WD24 - Cecil Street
- Furnished High Standard

Description

A modern and large en suite room is available in Watford WD24, ideal for working professionals seeking comfortable, well-managed accommodation in a central and well-connected location.

Located on Cecil Street, the property offers easy access to Watford town centre, transport links, supermarkets, and local amenities.

THE ROOM

- Fully furnished double bedrooms
- Large ensuite rooms available
- Spacious communal living room
- Shared bathroom options available
- Wardrobe and storage space
- Large shared kitchen plus a second smaller kitchen
- Super-speed broadband (400 Mbps)
- Constant hot water and central heating

ALL BILLS INCLUDED

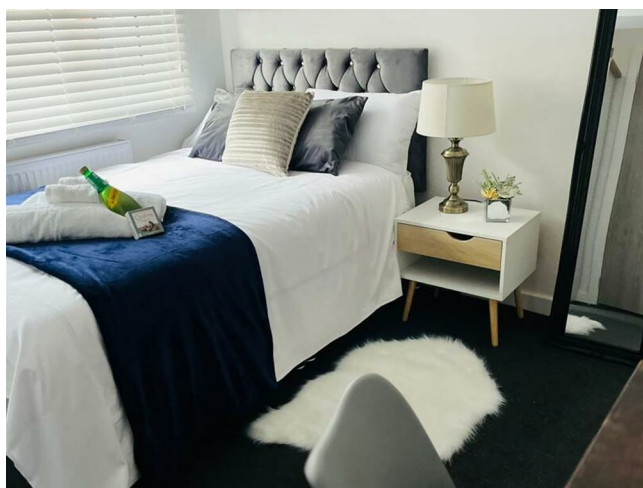
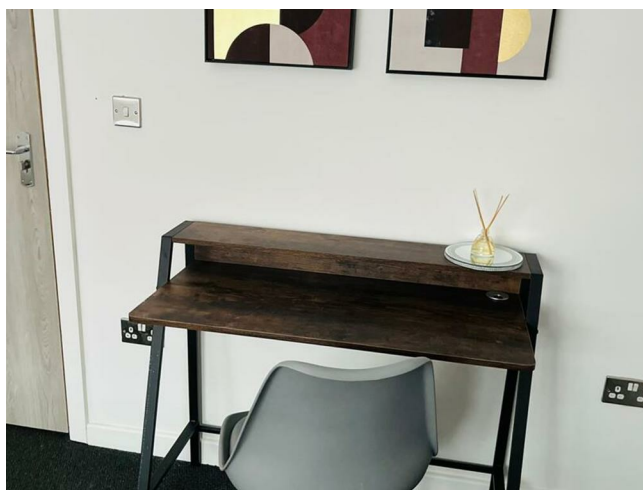
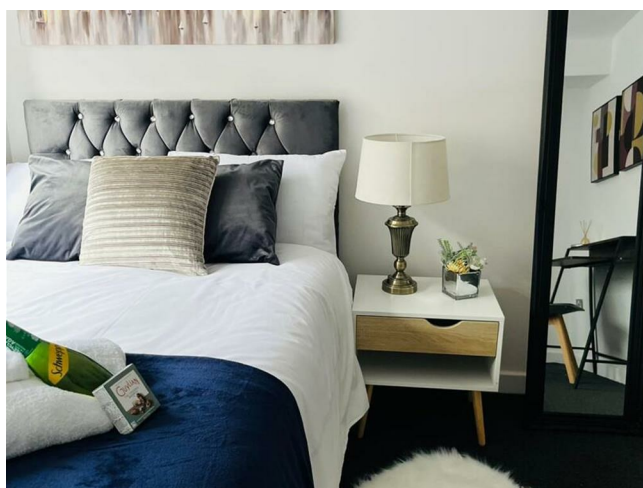
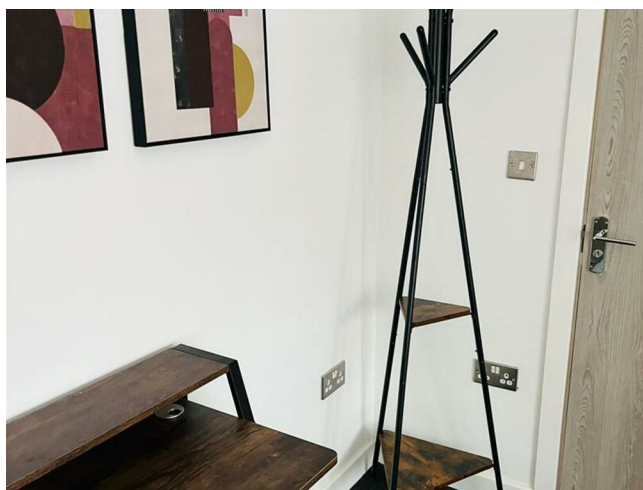
- Council Tax
- Electricity
- Gas
- Water
- Broadband

LOCATION

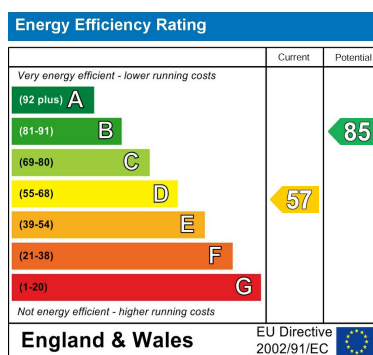
- Approximately 18–20 minutes walk to Langley House Community Hospital
- Approximately 12–15 minutes walk to Watford Junction Station
- Around 8 minutes walk to local shops
- Around 10 minutes walk to supermarkets
- Excellent transport links into London and surrounding areas

THE PROPERTY

Directions







Council Tax Band D EPC Rating D



68 South Hill Avenue
Harrow
HA2 0NH
02081501988
info@leafyestates.co.uk
leafyestates.co.uk