



9 Millbank Residences, London, SW1P

£5,000 pcm

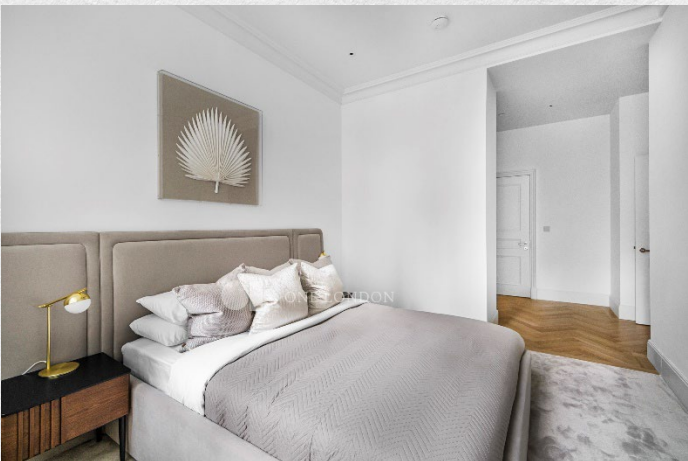
- One double bedroom
- Luxurious bathroom
- Open plan living area
- Large private terrace
- 569 sq ft
- 24 hr concierge and security
- Premium residents' amenities
- Grade II Listed Building
- Prestigious location

Experience the height of London sophistication in this stunning one-bedroom apartment, situated within a prestigious 1920s Grade II listed building in the heart of Westminster.

Spanning 569 square feet, the residence boasts impressive three-meter-high ceilings that enhance its sense of space and grandeur. Available from late January 2025, the layout features a vast open-plan reception and dining area, a fully fitted kitchen, and a double bedroom with integrated storage. Residents also enjoy a luxury bathroom, ample hallway storage, and a private terrace accessible from both the bedroom and living area.

Beyond the apartment, the development offers world-class amenities, including a 24-hour concierge, swimming pool, spa, cinema, and serene gardens.

Located in an iconic cultural hub, you are steps away from Tate Britain and within walking distance of three Royal Parks, Mayfair's dining, and Knightsbridge's shopping. With proximity to elite institutions like LSE and King's College, and excellent transport links via Westminster and Pimlico stations, this property offers an unparalleled lifestyle.





ONE LONDON

PROPERTY

9 Millbank, Westminster,
London SW1P

SIZE

569 sq ft

One bedroom | One bathroom

CONTACT

0207 856 0396
info@one-london.uk
www.one-london.uk

Millbank Residences



** For illustration purposes only. Could not be to scale.
One-London aims to ensure accuracy but is not liable
for any discrepancies.

LT543