



Lansdowne Drive, E8

£1,150,000

A three double bedroom Victorian maisonette with a west facing landscaped garden. This property is overlooking London Fields, measures in excess of 1137 square feet and has maintained many of its period features whilst being modernised throughout.

The property is located under 100 yards from Broadway market and directly opposite London Fields. Broadway Market has an abundance of Delis, cafés and Shops as well as its bustling Saturday and Sunday Market.

Features

- Three Double Bedrooms
- In excess of 1137 sqft
- Period Features Throughout
- Victorian
- Maisonette
- Garden



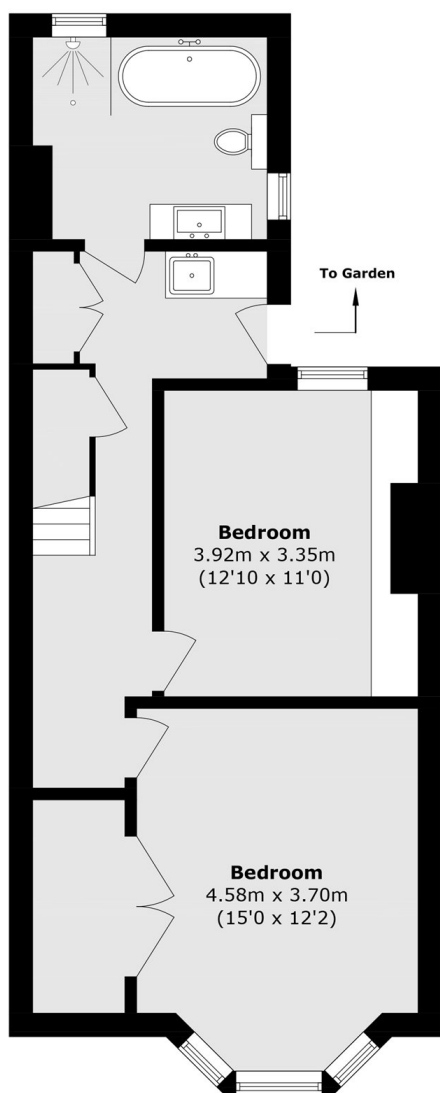
Lansdowne Drive, E8

As you enter at raised ground level you walk into a dual aspect, open plan kitchen and living room with high ceilings with ornate cornicing and ceiling rose. There is a sash bay window with bespoke shutters and views across London Fields and engineered wooden parquet flooring throughout. The kitchen has marble worktops, range cooker and centralised Island. To the rear of this level there is a Double bedroom, a WC and storage.

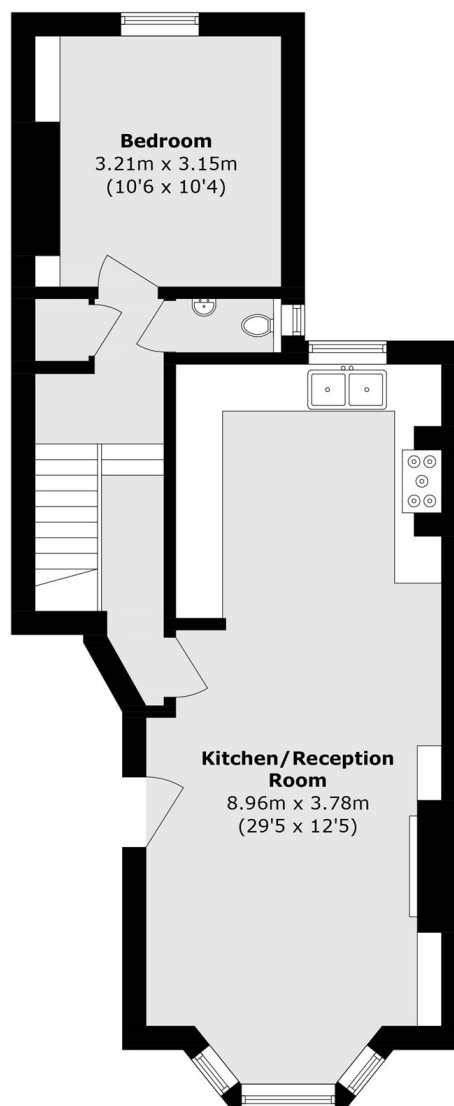
On the lower level, there is engineered wooden parquet flooring throughout. The principle bedroom has a bay window with bespoke shutters and a walk in dressing room. The third bedroom has view into the garden along with desk space to accommodate working from home. There is a modern family bathroom and laundry area which leads out through a door into the private garden. The garden has been landscaped including newly installed Decking. In addition there is a access to a parking area through a gate at the bottom of the garden.



Lansdowne Drive, London, E8



Lower Ground Floor



Raised Ground Floor

Total area (approx.): 105.7 sq. m (1137.7 sq. ft)