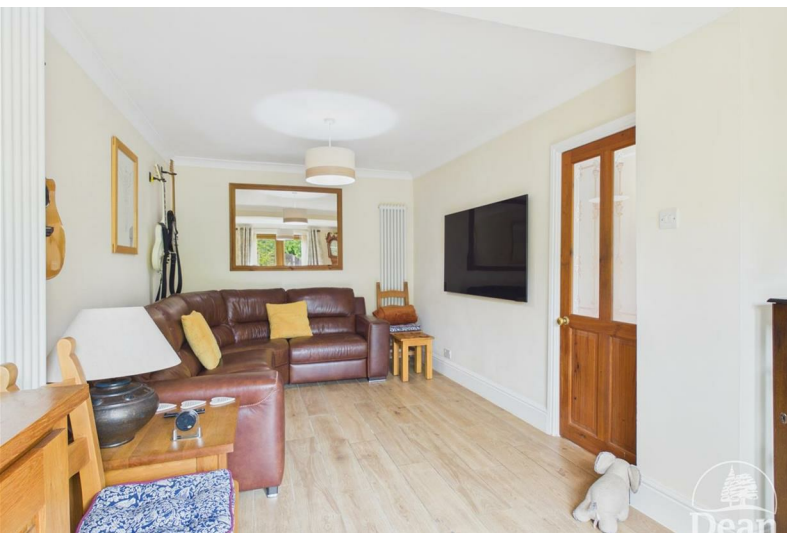




## Peacock Lane

Cinderford, GL14 3ET

£375,000

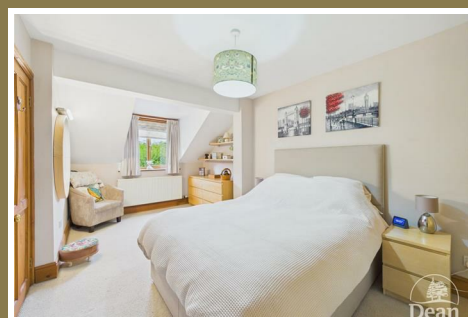
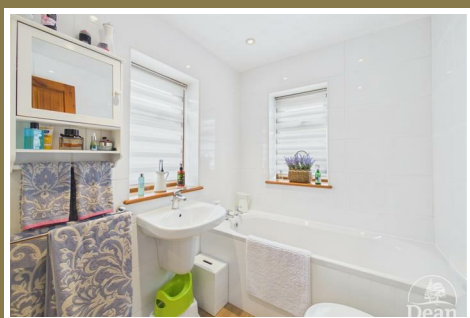


This beautifully presented pre-1900 semi-detached cottage effortlessly combines period charm with modern living. Fully modernised throughout, the property offers spacious and versatile accommodation including a cosy living room, a stylish fitted kitchen/diner ideal for entertaining, a practical utility room, and a contemporary bathroom fitted with a white suite.

Upstairs, there are three generous double bedrooms, while further benefits include double glazing and gas central heating for year-round comfort.

Set within impressive large gardens, the outdoor space is a particular feature of the home, boasting an abundance of mature shrubs, colourful flower borders, and a productive vegetable patch. A timber-built seating and barbecue area provides the perfect setting for outdoor dining and relaxation, complemented by a greenhouse and delightful woodland views beyond.

The property also benefits from extensive off-road parking for up to seven or eight vehicles, together with a garage/workshop, making it ideal for families, hobbyists, or those requiring additional vehicle space. Conveniently located close to scenic woodland walks, this charming cottage offers a wonderful blend of countryside character and modern convenience.



#### Entrance Hall :

UPVC double glazed door to front aspect, under stairs cupboard, tiled floor, radiator and cover.

#### Living Room :

9'6" x 18'11" (2.90 x 5.79)

Double glazed French doors to front, wood effect tiled floor, two vertical radiators, half glazed door to hallway.

#### Kitchen / Diner :

12'9" x 18'9" (3.91 x 5.73)

Matching wall and base cabinets, pan drawers, sink unit, electric oven, induction hob and extractor, integrated dishwasher, quartz work surfaces, tiled splash backs, tiled floor, radiator, stairs to first floor, double glazed window to front aspect, door to utility room.

#### Inner Lobby :

2'11" x 2'4" (0.91 x 0.72)

#### Bathroom :

5'7" x 9'11" (1.72 x 3.03)

Four piece suite comprising of bath, shower

cubicle, low level WC, wash hand basin, extractor fan, down lighting, tiled floor, tiled walls, vertical radiator, double glazed windows to front and side aspects.

#### Utility Room :

5'11" x 3'7" (1.81 x 1.10)

Fitted cupboards, plumbing for washing machine, space for tumble dryer, access to loft space, radiator, tiled floor, double glazed window to side aspect.

#### First Floor Landing :

6'5" x 2'10" (1.97 x 0.88)

#### Bedroom 1 :

9'8" x 16'10" (2.97 x 5.15)

Fitted wardrobe, radiator, double glazed window to front aspect with forest views.

#### Bedroom 2 :

9'7" x 8'11" (2.93 x 2.73)

Over stairs cupboard housing gas combination boiler, wardrobe, access to loft space (insulated), double glazed window to side aspect with forest views.

### Bedroom 3 :

10'9" x 9'6" (3.30 x 2.91)

Fitted wardrobe, radiator, double glazed window to front aspect with forest views.

### Outside :

Off road parking for two vehicles off Peacock lane, wrought iron gate and steps lead to the front door, large patio adjacent to the property, further steps down to lawned gardens, summer house, patio and BBQ area. The Barn is a timber structure with pitch roof,

stone sink, water, power and lighting, vegetable beds, wild flower garden, numerous shrubs, steps down to large parking area for up to 5 vehicles (depending on size) and rear gate access to Railway Road. A large garage with up and over door, power and lighting, attached workshop and greenhouse

### Garage and Workshop :

19'4 x 11'8 Garage

19'5 x 8'11 Workshop



Consumer Notes: Dean Estate Agents Ltd have prepared the information within this website/brochure with care and co-operation from the seller. It is intended to be indicative rather than definitive, without a guarantee of accuracy. Before you act upon any information provided, we request that you satisfy yourself about the completeness, accuracy, reliability, suitability or availability with respect to the website or the information, products, services, or related graphics contained on the website for any purpose.

These details do not constitute any part of any Offer, Contract or Tenancy Agreement.

Photographs used for advertising purposes may not necessarily be the most recent photographs, although every effort is made to update photographs at the earliest opportunity. Any reliance you place on such information is therefore strictly at your own risk. All photographic images are under the ownership of Dean Estate Agents Ltd and therefore Dean Estate Agents retain the copyright.

You must obtain permission from the owner of the images to reproduce them.

Tenanted Property – we are not always able to show the most recent condition of a property due to tenants' privacy and we may choose to show the photographs of the property when it was last vacant to at least allow clients some idea of the internal condition. Therefore, we would of course, urge you to view before making any decisions to purchase or rent the property and before any costs.

Energy Performance Certificates are supplied to us via a third party and we do not accept responsibility for the content within such reports.

PRC Certificates – Some ex-local authority properties have been repaired in recent years using the PRC Scheme wherein a certificate has been produced by a qualified property engineer. This certificate does not imply the suitability for a mortgage approval and you must satisfy yourself of the work carried out that may meet your lenders criteria.

As with leasehold property or new build development sites, you are likely to be responsible for a contribution to management charges and/or ground rent or a contribution to the development service charge. Please enquire at the time of viewing.

You may also incur fees for items such as leasehold packs and, in addition, you will also need to check the remaining length of any lease before you complete a mortgage application form.

Please ask a member of our team for any help required before committing to purchase a property and incurring expense.

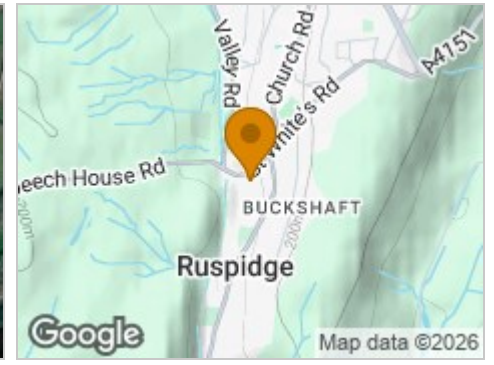
## Road Map



## Hybrid Map



## Terrain Map



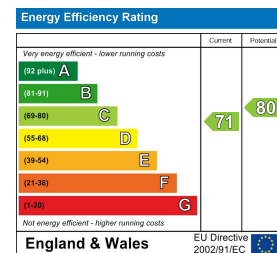
## Floor Plan



## Viewing

Please contact our Cinderford Office on 01594 825574 if you wish to arrange a viewing appointment for this property or require further information.

## Energy Efficiency Graph



These particulars, whilst believed to be accurate are set out as a general outline only for guidance and do not constitute any part of an offer or contract. Intending purchasers should not rely on them as statements of representation of fact, but must satisfy themselves by inspection or otherwise as to their accuracy. No person in this firm's employment has the authority to make or give any representation or warranty in respect of the property.