



29 East Central Apartments,

Station Approach | | Walthamstow | E17 9GY

£1,600 PCM



STRETTONS

Key features

- Available Now
- 5th Floor Apartment
- 1 Double Bedroom
- Cycle Storage
- Glass balcony
- Appliances Included
- Unfurnished
- EPC Rating B
- Council Tax Band B

Description

Strettons Residential is pleased to present an exceptional opportunity to rent a modern unfurnished one-bedroom apartment in the heart of Walthamstow, located at East Central Apartments, Station Approach.

The apartment features a spacious double bedroom, ideal for relaxation and rest. The open-plan kitchen and reception area create a welcoming space for entertaining or unwinding after a long day. This area seamlessly extends to a glass balcony, providing a delightful spot to enjoy fresh air and views. The fully fitted bathroom is designed with elegance, showcasing high-quality Hansgrohe fittings and Porcelanosa tiles, ensuring a luxurious experience.

Residents will benefit from access to a communal roof garden, perfect for socialising or enjoying a quiet moment outdoors. Additionally, there is bicycle storage available, catering to those who prefer cycling as a mode of transport. The property is equipped with a state-of-the-art Combined Heat and Power (CHP) system, promoting energy efficiency and comfort throughout the year.

Tenancies Signed on or after 1st June 2019

Holding deposit - 1 week's rent

Security deposit - 5 week's rent (rent of £50,000 or over per annum - 6 week's rent)

Unpaid rent - 3% above Bank of England base rate from Rent Due Date after 14 days in arrears.

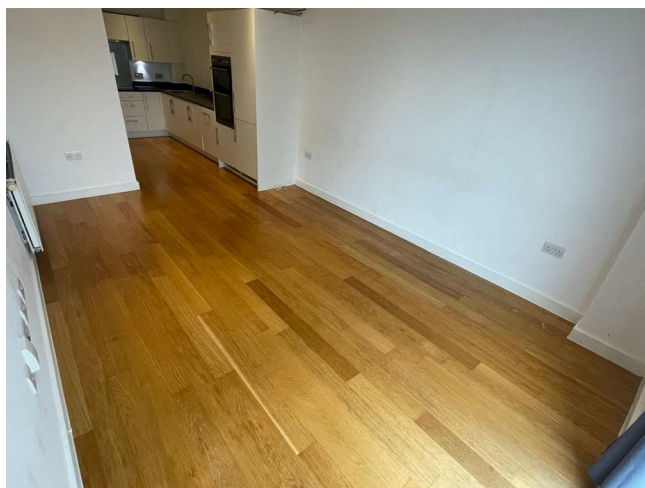
Lost keys - Cost of replacement key or other security device/lock replacement/locksmith.

£15/hour (inc. VAT) for extra costs incurred in time taken to replace keys.

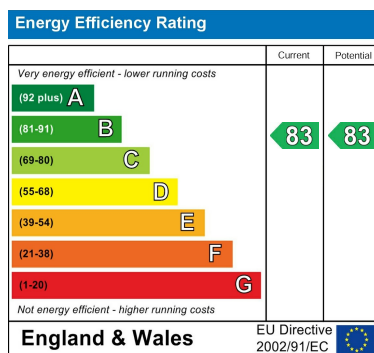
Variation of contract - £50 (inc. VAT) per variation

Change of sharer - £50 (inc. VAT) per replacement tenant

Directions







Council Tax Band B EPC Rating B



69 Paul Street
London
London
EC2A 4NG
02085 094406

michael.mercer@strettons.co.uk