



# Haslemere Avenue

Hendon, NW4

£6,000 per month  
(£1,384.62 per week)

This stunning and beautifully presented five bedroom family home has been extended over three floors. It is a well-presented detached family home in the Shirehall Estate.

This immaculate home is offered in good condition, providing over 2500 SQFT of accommodation. This property comprises a large double reception room, fully fitted kitchen/breakfast room, utility room, additional reception room and ground floor cloakroom.

On the first floor, there are four double bedrooms, a family bathroom and separate W.C. Whilst on the second floor, there is a grand principle suite with ample storage and an en-suite bathroom.

Other benefits include a large rear garden and off street parking for 2 cars.

**CHESTERTONS**



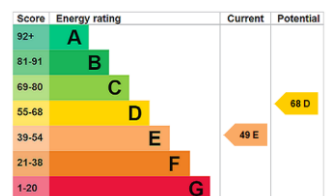
# Haslemere Avenue

Hendon, NW4

- Large Reception Space
- Private Rear Garden
- Driveway
- 5 Bedrooms
- Residential Family Area



**Deposit Required:** £8,307.69  
**Local Authority:** London Borough of Barnet  
**Council Tax Band:** G  
**EPC Rating:** E  
**Unfurnished**



### *Chestertons Hampstead Lettings*

55-56 Hampstead High Street  
Hampstead  
London  
NW3 1QH  
hampsteadlettingsusers@chestertons.co.uk  
02077941125  
chestertons.co.uk

Additional tenant charges apply (fees apply to non-AST tenancies only)  
Tenancy Agreement Fee: £300  
References per Tenant/Guarantor: £60  
Inventory check (approx. £100 – £250 inc. VAT)  
[chestertons.co.uk/property-to-rent/applicable-fees](https://www.chestertons.co.uk/property-to-rent/applicable-fees)

Haslemere Avenue, London, NW4  
 Approximate Gross Internal Floor Area = 239.4 sq m / 2577 sq ft

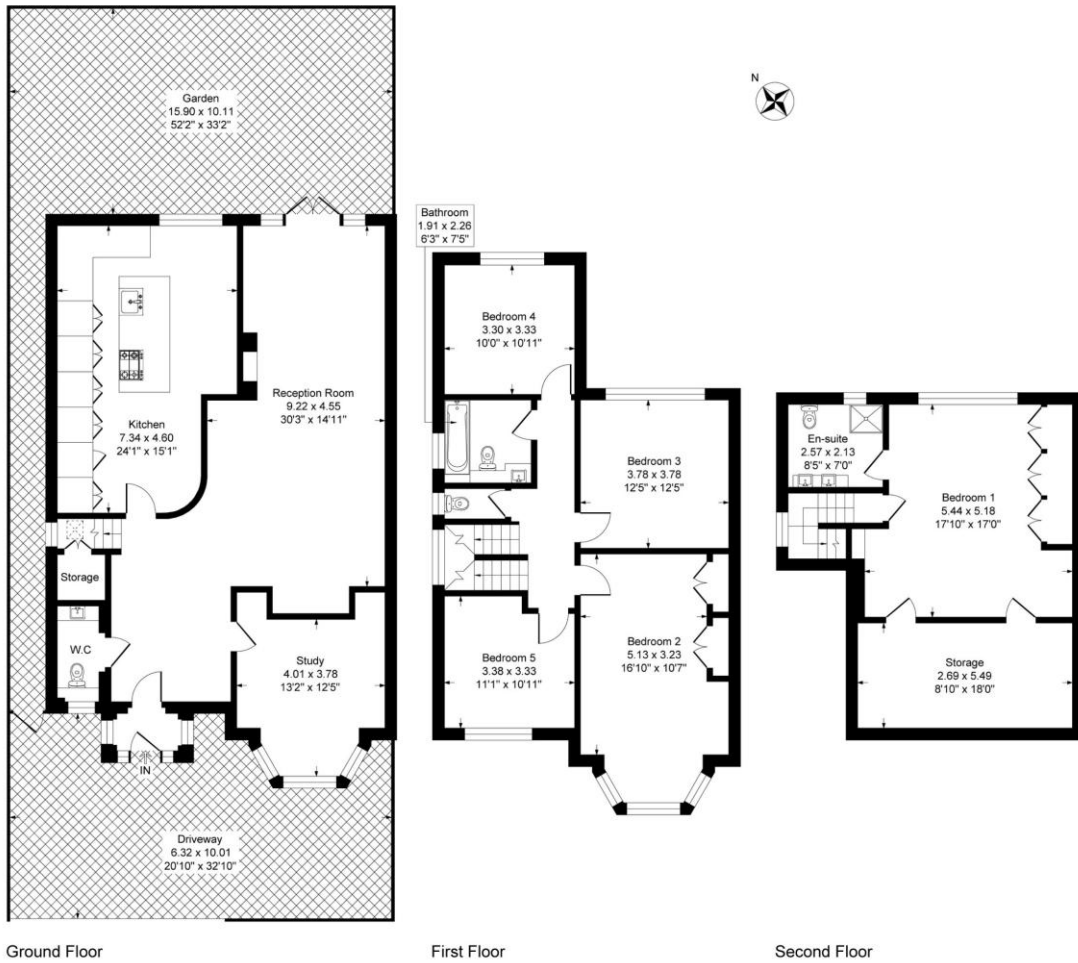


Illustration for identification purposes only, measurements are approximate, not to scale.