



Guide Price
£300,000

**Share of
Freehold**

2x  1x  1x 

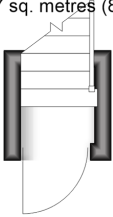
**Liskeard Lodge,
Tupwood Lane,
Caterham, Surrey, CR3**

OVER 60?

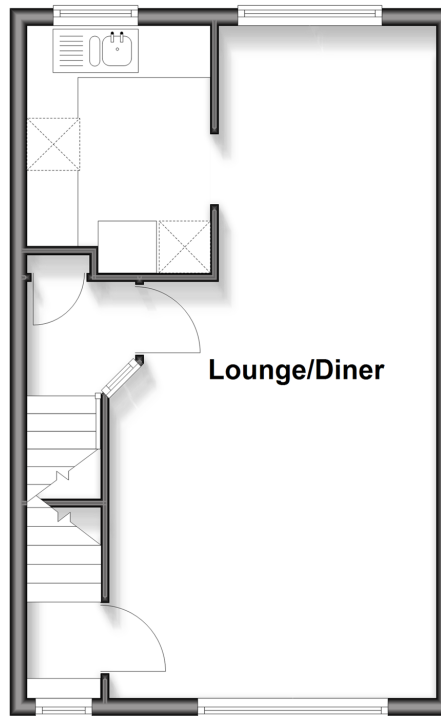
Secure this property
for up to **59% less!**

cubitt & west
Helping you move forwards

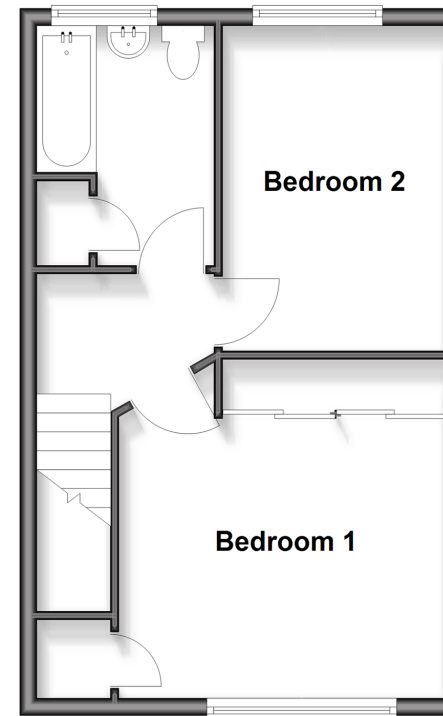
Ground Floor
Approx. 0.7 sq. metres (8.1 sq. feet)



First Floor
Approx. 37.2 sq. metres (400.4 sq. feet)



Second Floor
Approx. 37.2 sq. metres (400.4 sq. feet)



Accommodation

GROUND FLOOR

Entrance Hallway

FIRST FLOOR

Lounge/Diner: 25'2 x 12'6 (7.68m x 3.81m)

Kitchen: 9'4 x 7'1 (2.85m x 2.16m)

SECOND FLOOR

Bedroom 1: 12'7 x 10'11 up to fitted wardrobes
(3.84m x 3.33m)

Bedroom 2: 12'2 x 9'1 (3.71m x 2.77m)

Bathroom

OUTSIDE

Outbuilding

Garage



Main features

- Split-level purpose-built duplex maisonette
- Garage en-bloc and parking space
- Close to woodland
- Beautiful green views
- Easy to access generous loft storage space
- Great opportunity for a first-time buyer
- Share of freehold
- Within easy reach of the town centre & station

Nearest Schools

Primary Schools: St John's CofE Aided Primary 1.2 miles, Marden Lodge Primary 1.9 miles, Hillcroft Primary 1.9 miles

Secondary Schools: Caterham School 1.2 miles, Clifton Hill

Transport Information

Train Stations: Caterham 0.9 miles, Whyteleafe South 3.3 miles, Hurst Green 3.3 miles, Oxted 3.3 miles

Address

Liskeard Lodge, Tupwood Lane, Caterham, Surrey, CR3

Directions

For directions to this property please contact us.



cubitt&west
Helping you move forwards

Call Caterham Branch 01883 331000 ■ cubittandwest.co.uk



■ Through a Homewise Home For Life Plan people aged 60+ can secure this property for up to 59% less, by purchasing a Lifetime Lease



24408391/20260323/JE/DS