



West Townsend Cottage Rothwell Road
Northampton, NN6 9HJ



Simpson West

Simpson West Lettings are delighted to offer to let this beautifully presented three bedroom stone built cottage situated within the quiet and picturesque village of Lamport. The property is immaculately presented throughout and has many features to include entrance hall, a formal lounge, a kitchen/ dining room and bathroom to the ground floor. Upstairs there is a master bedroom, a further double bedrooms, a single bedroom and another family bathroom. Outside there is a garden offering ample storage space and off road parking. Viewing is highly recommended to fully appreciate this property. Energy Rating E. Council Tax Band B.

£1,400 Per Calendar Month



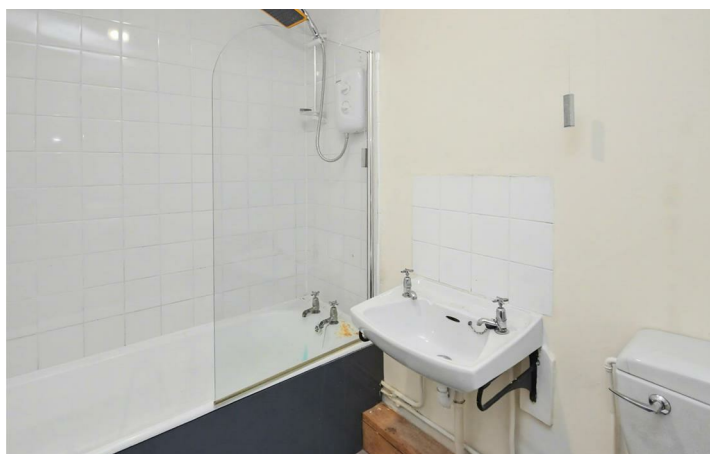
3



2



nul



Simpson West

FLOORPLAN COMING SOON



Energy Efficiency Rating		
	Current	Potential
Very energy efficient - lower running costs		
(92 plus) A		
(81-91) B		
(69-80) C		
(55-68) D		
(39-54) E		
(21-38) F		
(1-20) G		
Not energy efficient - higher running costs		
England & Wales	EU Directive 2002/91/EC	



When you buy with Simpson West, you know **you'll be in safe hands**. From the moment you walk through our doors, we'll make you **feel truly welcome**. Our sales consultants and financial advisors will take you through **every step of the process**, offering **free expert advice** along the way, from help choosing the right mortgage and insurance through to finding your conveyancer. And if you need help selling your home too, **with over 20 years of local experience, you can trust us to get you moving**.



**Simpson
West**

Making Every
Journey Personal



01536 202007

info@simpsonwest.co.uk

<https://www.simpsonwest.co.uk/>

64 Corporation Street, Corby, Northants, NN17 1NH