

Maple Road, KT6

£1,450 Per calendar month

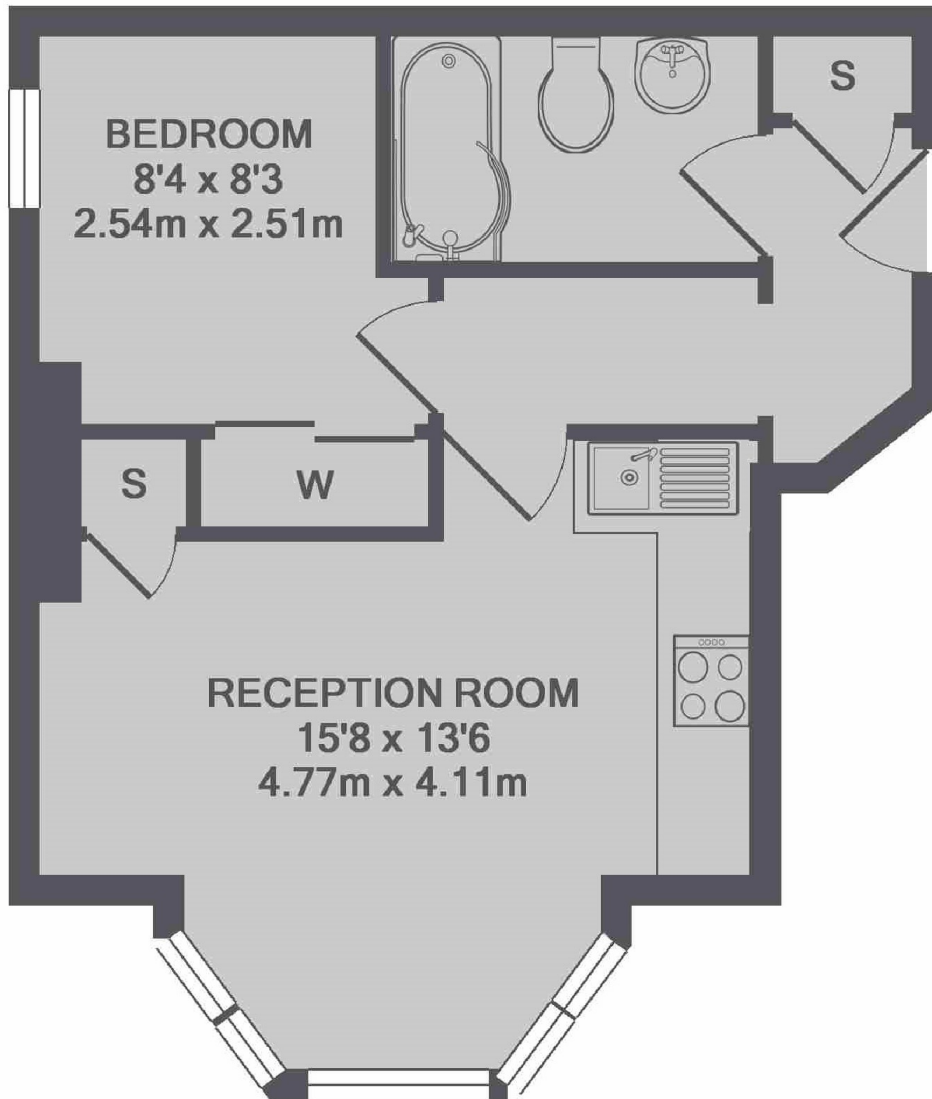
A Victorian apartment offering an open plan kitchen/reception room, a double bedroom with a fitted wardrobe, a modernised bathroom and an allocated parking space.

Maple Road is a highly desirable place to live, offering an array of shops, bars and restaurants. Surbiton train station is less than a third of a mile away.

Features

- Victorian Building
- Open Plan Kitchen
- One Double Bedroom
- Modernised Bathroom
- Allocated Parking
- Central Location

Maple Road,
Surbiton, KT6



TOTAL APPROX. FLOOR AREA 343 SQ.FT. (31.9 SQ.M.)

Dexters

Surbiton
4 Claremont Road
Surbiton
KT6 4QU

Lettings
020 8390 6544

Energy Rating: D. We aim to make our particulars both accurate and reliable. However they are not guaranteed; nor do they form part of an offer or contract. If you require clarification on any points then please contact us, especially if you're traveling some distance to view. Please note that appliances and heating systems have not been tested and therefore no warranties can be given as to their good working order.

 **RICS** | Regulated
Estate Agent
and Letting Agent

dexters.co.uk