



387 Hurcott Road

Kidderminster, DY10 2QH

Andrew Grant

387 Hurcott Road

Kidderminster, DY10 2QH

5 Bedrooms 2 Bathrooms 2 Reception Rooms

A generously proportioned five bedroom home arranged across three floors with flexible accommodation, a rear garden and excellent scope to modernise and personalise.

- Spacious five bedroom home arranged over three floors
- Two reception rooms including a living room with bay window
- Rear garden with lawn and paved seating area
- On road parking available to the front of the property
- Well positioned for Kidderminster town centre and local amenities

This five bedroom home provides spacious accommodation arranged over three floors, including two reception rooms and a kitchen positioned to the rear. The layout offers flexible living with a ground floor bedroom and shower room alongside four further bedrooms on the upper floors. A rear garden provides outdoor space with lawn and patio, while the property benefits from convenient access to local amenities and transport links within Kidderminster.

1675 sq ft (155.6 sq m)





The kitchen

Designed as a practical working space, the kitchen runs along the rear of the house in a galley layout. A range of fitted base and wall cabinets lines both sides, complemented by tiled splashbacks and wood flooring. A freestanding range cooker is set beneath an extractor hood, while a stainless steel sink sits below the window.





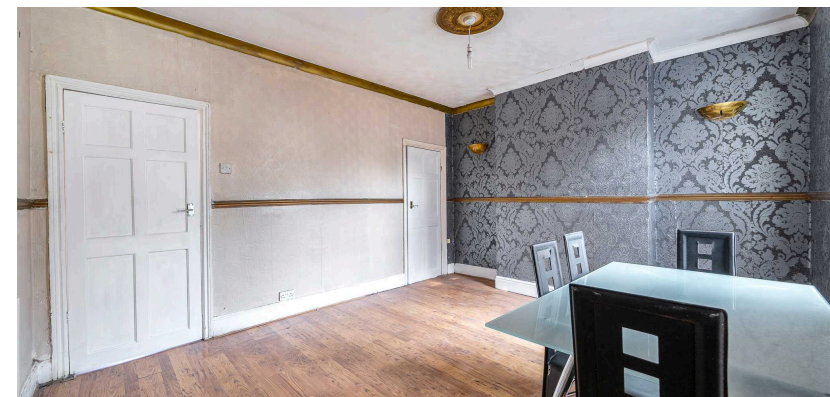
The living room

Arranged at the front of the house, the living room provides a comfortable space for everyday relaxation. A prominent bay window forms the focal point, bringing character to the room and creating additional floor space. Timber flooring runs throughout and wall mounted shelving offers useful display areas, while the room connects conveniently with the hallway beyond.



The dining room

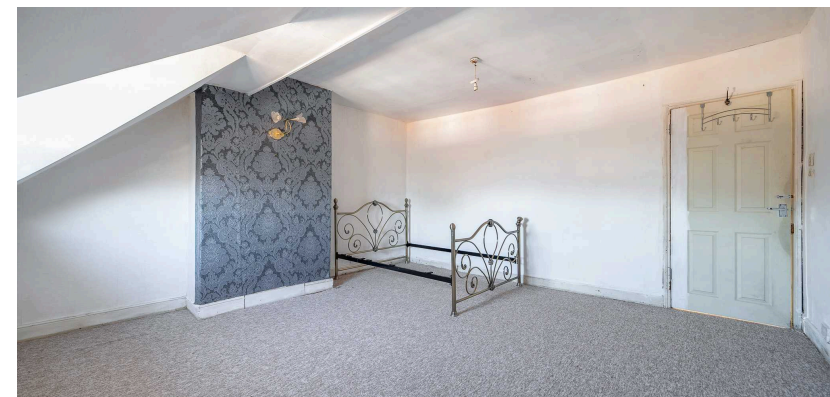
Well suited to family meals and gatherings, the dining room offers generous proportions and a clear connection with the adjoining spaces. Timber flooring extends across the room and an arched opening leads towards the kitchen area at the rear. Decorative ceiling detailing adds character above the central dining space, while a door provides outlook and natural ventilation. From here, stairs lead to the first floor





The primary bedroom

Occupying the upper floor, the primary bedroom forms a spacious principal suite within the roof level of the house. Sloping ceilings shape the room and create a distinctive characterful interior. Two roofline windows provide outlook and ventilation, while the generous floor area allows ample space for bedroom furniture and everyday use.





The second bedroom

Providing a well proportioned double room, the second bedroom is arranged on the first floor. A large window brings daylight into the room and provides an open outlook. The rectangular layout offers flexibility for bedroom furniture and storage, making it well suited for regular use within the household.



The third bedroom

Set on the upper floor, the third bedroom provides a generous double room with distinctive character. Sloping ceilings create an interesting architectural shape while a window within the roofline provides ventilation and outlook. The open floor area allows flexible placement of bedroom furniture within the room.



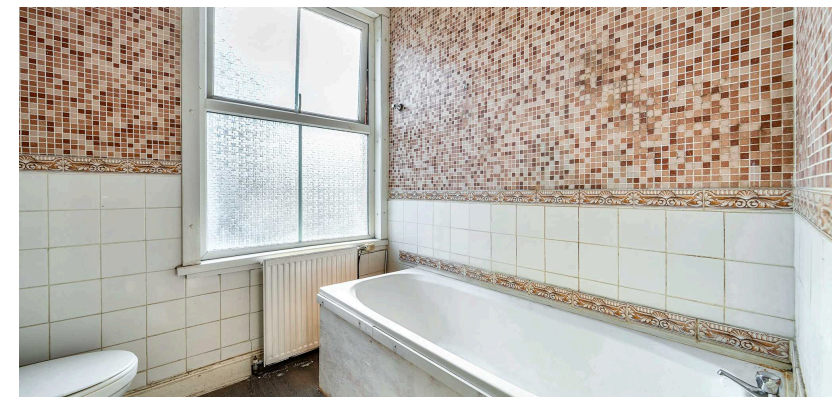
The fourth bedroom

Offering a versatile room within the first floor layout, the fourth bedroom is well suited to use as a bedroom or study. A window provides ventilation and outlook while the room also houses a wall mounted boiler.



The bathroom

Serving the first floor accommodation, the bathroom is fitted with a bath, pedestal wash basin and WC. Tiled wall surfaces run around the room while a frosted window provides privacy and ventilation. The layout supports practical everyday use as the main family bathroom.





The fifth bedroom

Positioned on the ground floor, the fifth bedroom provides flexible accommodation suitable for guests or family members. Glazed double doors open directly to the rear garden and bring daylight into the room. The straightforward layout offers space for bedroom furniture while also allowing direct access to the adjoining shower room.



The fifth bedroom shower room

Serving the ground floor bedroom, the shower room is fitted with a shower, wash basin and WC. Tiled walls run around the space and a window provides ventilation. The practical arrangement creates a convenient en suite style facility for the adjoining bedroom.



The garden

Extending to the rear of the property, the garden provides a useful outdoor area for everyday enjoyment. A paved patio sits directly outside the house, creating space for seating and outdoor use. Beyond this, a lawn stretches towards the rear boundary with fencing and established planting along the sides providing enclosure.



Location

Hurcott Road is situated within a well established residential area of Kidderminster, providing convenient access to a range of everyday amenities. The town offers a selection of shops, supermarkets, cafes and leisure facilities alongside well regarded schooling options. Transport links are easily accessible, with road connections serving surrounding towns and villages while rail services from Kidderminster provide routes towards Worcester and Birmingham. Nearby green spaces and riverside walks offer opportunities for outdoor recreation, making the area appealing for a wide range of buyers.

Services

The property benefits from mains gas, electricity, water and drainage.

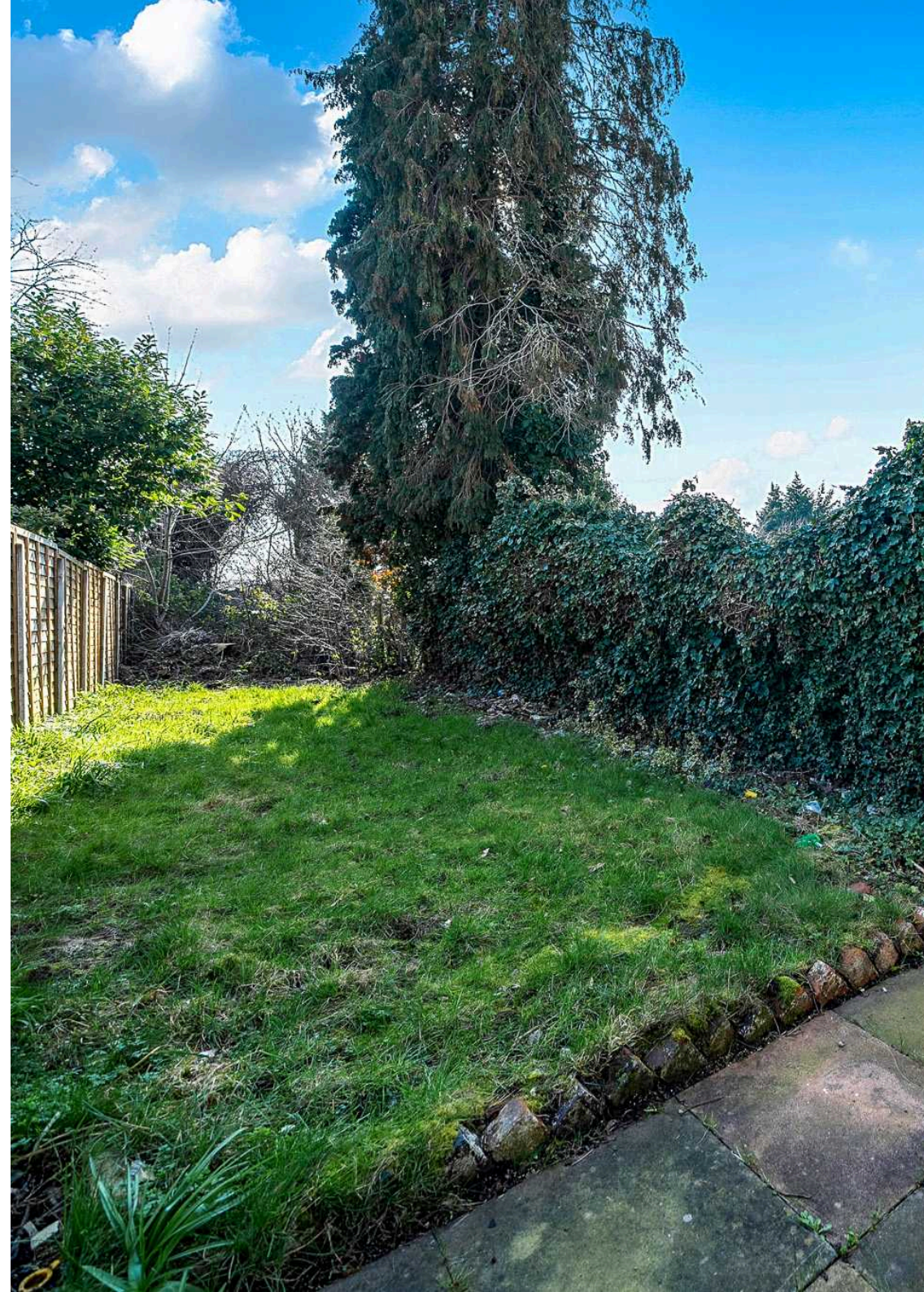
Broadband Speed: Ultrafast broadband available. Download speeds up to 1800 Mbps and upload speeds up to 220 Mbps (source: Ofcom checker).

Mobile Coverage: Likely available from EE, Three, O2, Vodafone (source: Ofcom checker).

Flood Risk (Long-term forecast): According to the Environment Agency's long-term flood risk data, the property is currently at very low risk for river and surface water flooding.

Council Tax

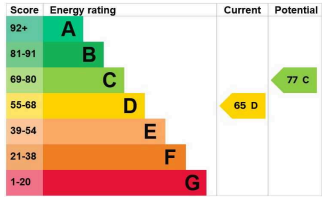
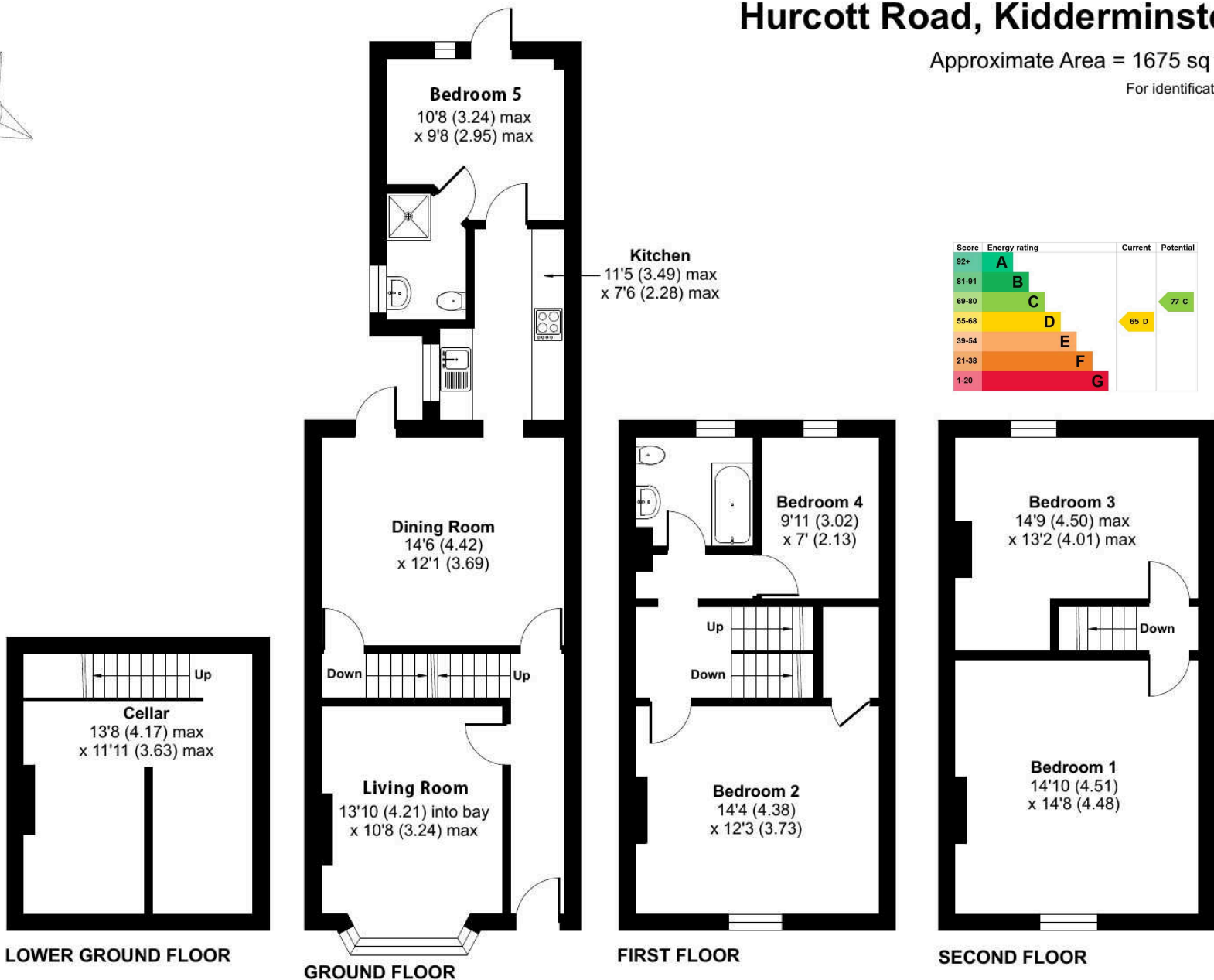
The Council Tax for this property is Band B.



Hurcott Road, Kidderminster, DY10

Approximate Area = 1675 sq ft / 155.6 sq m

For identification only - Not to scale



Floor plan produced in accordance with RICS Property Measurement 2nd Edition, Incorporating International Property Measurement Standards (IPMS2 Residential). © nchecon 2026. Produced for Andrew Grant. REF: 1422625



DISCLAIMER: These particulars are not to form part of a Sale Contract owing to the possibility of errors and/or omissions. Prospective purchasers should therefore satisfy themselves by inspection or otherwise as to their correctness. All fixtures, fittings, chattels and other items not mentioned are specifically excluded unless otherwise agreed within the Sale Contract documentation or left in situ and gratis upon completion. The property is also sold subject to rights of way, public footpaths, easements, wayleaves, covenants and any other matters which may affect the legal title. The Agent has not formally verified the property's structural integrity, ownership, tenure, acreage, estimated square footage, planning/building regulations' status or the availability/operation of services and/or appliances. Therefore prospective purchasers are advised to seek validation of all the above matters prior to expressing any formal intent to purchase. We commonly receive referral fees from specialist service partners – an outline of these can be found here: <https://cutt.ly/referrals> and are reviewed annually in line with our financial year to identify any changes in average fee received.



Andrew Grant

T. 01905 734734

E. hello@andrewgrant.com

andrewgrant.com