

shepherds

A better home
moving experience



114 Windsor Drive

Hertford, SG14 2HY

Price Guide £210,000



114 Windsor Drive

Hertford, SG14 2HY

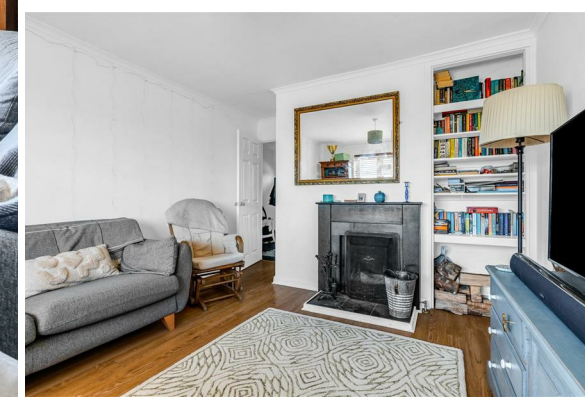
Located on Windsor Drive, this bright and well-proportioned one-bedroom second-floor apartment presents an excellent opportunity for first-time buyers or investors looking for a property in a convenient and well-connected setting.

The apartment offers a light and welcoming living room, providing a comfortable space to relax or entertain. A separate kitchen sits just off the living space and is well arranged with practical storage and worktop space.

The generous double bedroom enjoys plenty of natural light and offers ample space for bedroom furniture, while the bathroom is fitted with a bath, wash basin and WC.

Windsor Drive is well placed for everyday convenience, with a variety of local shops, convenience stores, cafés and takeaways all within easy reach, making day-to-day living simple and accessible.

Offering a great balance of comfortable living space and a convenient location, this apartment represents a fantastic step onto the property ladder or a smart buy-to-let investment.





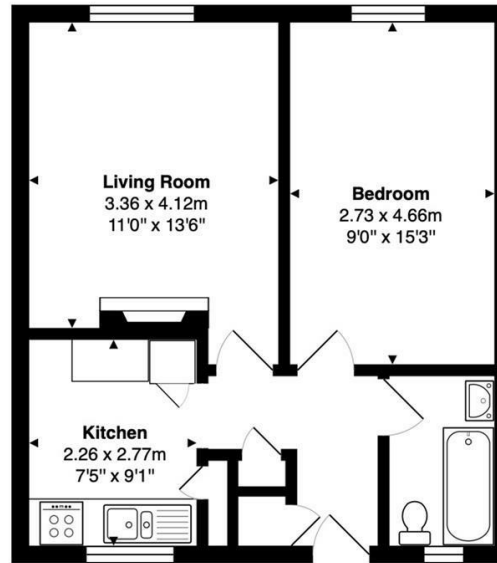
- Bright and well-proportioned one-bedroom apartment
- Spacious living room with plenty of natural light
- Separate fitted kitchen with good storage and worktop space
- Generous double bedroom
- Convenient location close to local shops, cafés and everyday amenities
- Ideal purchase for first-time buyers or investors

Tenure - Leasehold - 85 years remaining

Service Charge -

Ground Rent -

Floor Plan



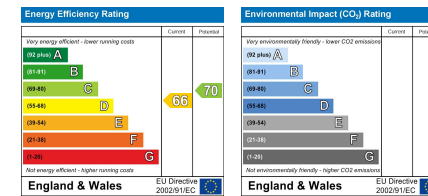
Second Floor
Area: 44.2 m² ... 476 ft²

FOR ILLUSTRATIVE PURPOSES ONLY, NOT TO SCALE.
Whilst every attempt has been made to ensure the accuracy of the floor plan shown, all measurements, positioning, fixtures, features, fittings and any other data shown are an approximate interpretation for illustrative purposes only and are not to scale. No responsibility is taken for any error, omission, miss-statement or use of data shown.
Property marketing provided by www.matthewkyle.co.uk

Viewing

Please contact Shepherds of Hertford on 01992 551955 if you wish to arrange a viewing appointment for this property or require further information.

Energy Performance Graph



These particulars, whilst believed to be accurate are set out as a general outline only for guidance and do not constitute any part of an offer or contract. Intending purchasers should not rely on them as statements of representation of fact, but must satisfy themselves by inspection or otherwise as to their accuracy. No person in this firm's employment has the authority to make or give any representation or warranty in respect of the property.

Riverside House, 6 Millbridge, Hertford, SG14 1PY
Tel: 01992 551955 Email: enquiries@shepherdsfhertford.co.uk