



RESIDE  
—  
MANCHESTER



Flat 17 M One 50 Princess Street  
Manchester, M1 6HR

**Asking Price £550,000**



4



3



1



C

# Flat 17 M One 50 Princess Street

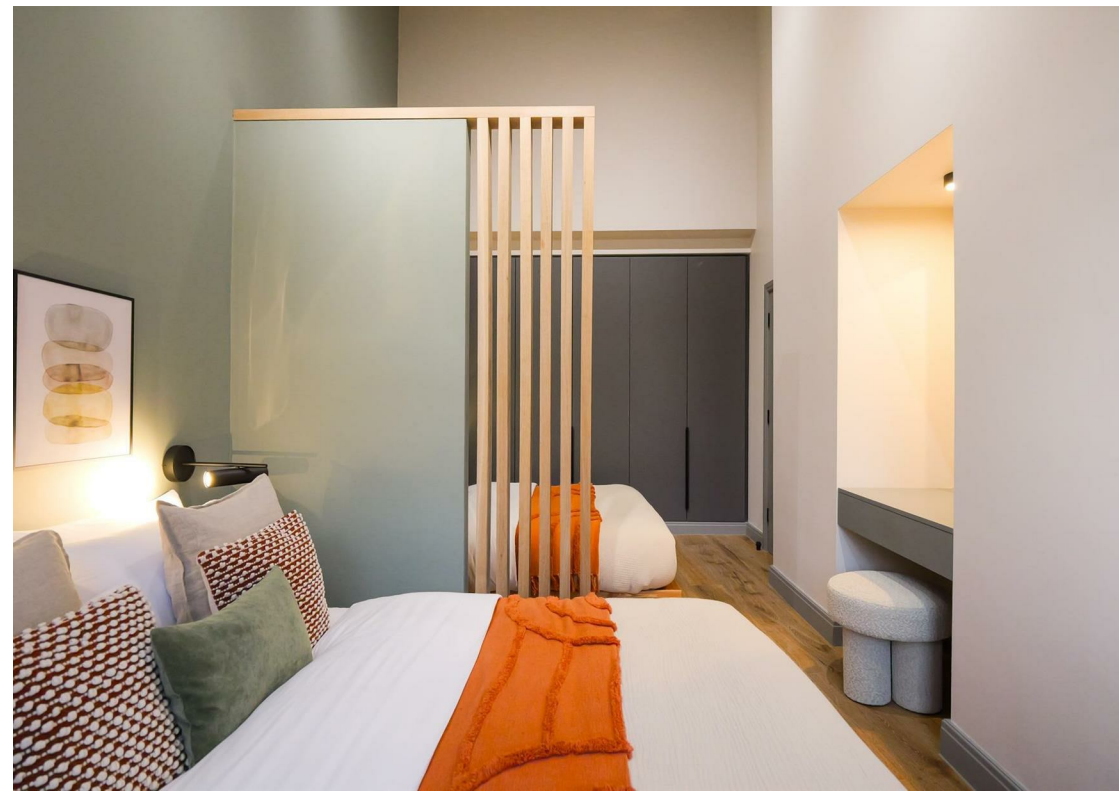
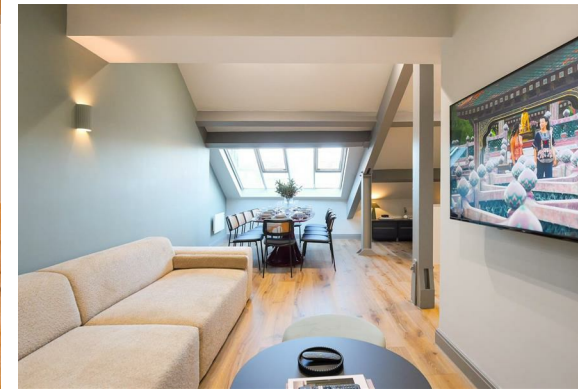
Manchester, M1 6HR

This stylish duplex penthouse in Manchester City Centre is a spacious retreat, featuring four king-size bedrooms, three full bathrooms (including one with a jacuzzi bath), a fully equipped kitchen, with a spacious area for dining and a bright open-plan living area.

The two-floor layout is connected by a spiral staircase and includes air conditioning, Wi-Fi, a washer/dryer, and elevator access.

Located near major attractions, theaters, restaurants, and cultural landmarks, it offers comfort, convenience, and a central base for exploring the city.

This property is being offered chain free. Please contact the sales team to organise a viewing on 0161 837 2840!





### The Tour

Step into this stunning four-bedroom duplex apartment and prepare to be impressed from the moment you arrive. You're welcomed by a spacious entrance hallway that immediately sets the tone—bright, airy, and beautifully presented. From here, you have access to all four bedrooms, the main bathroom, and an eye-catching spiral staircase that sweeps you up to the heart of the home.

Each of the four king-sized bedrooms is generously proportioned and full of character, featuring striking exposed brickwork, impressive high ceilings, and an abundance of natural light that enhances the sense of space. The primary suite offers a peaceful retreat, complete with a stylishly tiled en-suite shower room, finished to the same high standard as the sleek and modern main bathroom.

Ascend the spiral staircase and you'll discover a spectacular open-plan kitchen, living, and dining area. With dramatic vaulted ceilings and expansive windows flooding the space with light, this level is designed for both relaxing and entertaining. The contemporary kitchen is fully fitted quartz worktops, an electric hob, oven, extractor fan, fridge/freezer, and dishwasher—perfectly equipped for everyday living and hosting alike.

Tucked just behind the kitchen is an additional bathroom featuring a luxurious jacuzzi hot tub—your own private spa space to unwind and recharge.

The living and dining areas are wonderfully spacious, offering ample room for gatherings, dinner parties, or simply enjoying the openness and light of this exceptional home. This duplex seamlessly blends character, comfort, and contemporary living—an ideal space for those who love style and space in equal measure.

### The Area

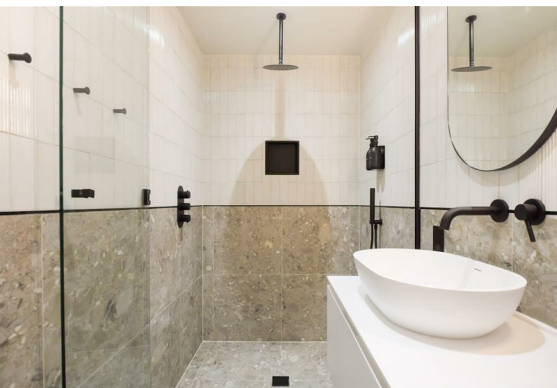
50 Princess Street sits in the heart of Manchester city centre, in a busy commercial and cultural district. It's just steps from St Peter's Square (home to Central Library and major tram links) and close to Chinatown and Canal Street, known for restaurants and nightlife. The area is characterised by historic Victorian commercial buildings mixed with modern offices, hotels, cafés and retail. It's highly walkable, well connected by public transport, and lively throughout the day and evening.

### Lease Information

Lease length: 150 years from the 1 January 2001

Ground rent : £156 per annum

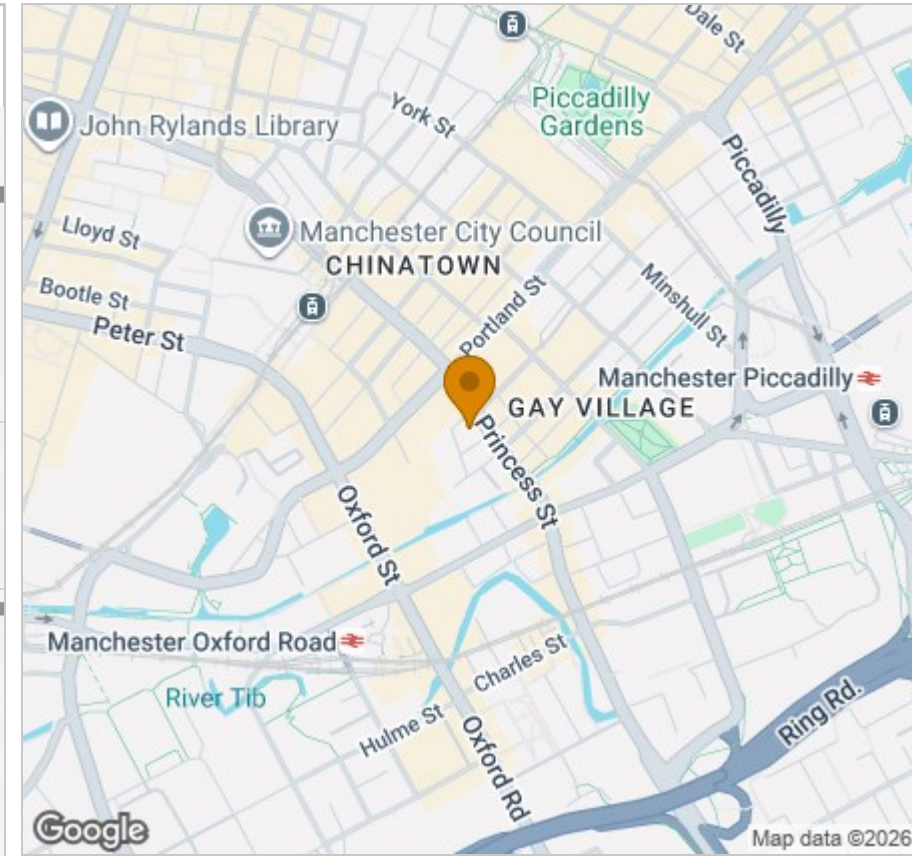
Service charge : £7,067 per annum



## Floor Plan



## Area Map



## Viewing

Please contact our Reside Manchester Office on 0161 837 2840 if you wish to arrange a viewing appointment for this property or require further information.

These particulars, whilst believed to be accurate are set out as a general outline only for guidance and do not constitute any part of an offer or contract. Intending purchasers should not rely on them as statements of representation of fact, but must satisfy themselves by inspection or otherwise as to their accuracy. No person in this firm's employment has the authority to make or give any representation or warranty in respect of the property.

## Energy Efficiency Graph

