

PETERMANS
LOCAL PROPERTY EXPERTS



Edgwarebury Lane, Edgware £1,395,000 Freehold

- 5/6 Bedroom, 4 Bathroom Detached Family Home
- Immaculate Condition
- Impressive Open Plan Kitchen and Family Room Lounge
- D/S Bedroom With En-Suite Shower
- D/S WC
- Jack & Jill Bathroom
- Master Bedroom On Top Floor With En-Suite Shower Room & Dressing Room
- 2,725 Sq Ft

8 THE PROMENADE, EDGWAREBURY LANE, EDGWARE, MIDDLESEX HA8 7JZ
t: 020 8958 5040 e: edgware@petermans.co.uk w: www.petermans.co.uk



Petermans for themselves and for the vendors or lessors of this property for whom they act, give notice that i) these particulars are a general outline only, for the guidance or prospective purchasers or tenants, and do not constitute the whole or any part of an offer or contract, ii) Petermans cannot guarantee the accuracy of any description, dimensions, references to condition, necessary permissions for use and occupation; and other details contained herein, and prospective purchasers or tenants must not rely on them as statements of fact, and must satisfy themselves as to their accuracy, iii) no employee of Petermans has any authority to make or give any or representation or warranty or enter into any contract whatever in relation to the property, iv) rents, prices, premiums and service charge quoted in these particulars may be subject to VAT in addition, and v) Petermans will not be liable, in negligence or otherwise, for any loss arising from the use of these particulars.



We are delighted to offer this extended five/six-bedroom, four-bathroom detached family home. The property is ideally situated on a highly sought-after road, directly opposite Edgwarebury Park, and within close proximity to excellent schools, places of worship, and inside the Eruv.



The property features an attractive entrance hallway with access to a guest WC, a reception room, and a ground-floor bedroom with its own en-suite shower room. The heart of the home is the spacious open-plan kitchen and family room, complete with bifold doors opening fully onto the garden, as well as a separate utility room.

On the first floor, there are four well-proportioned, double bedrooms, two of which share a Jack and Jill bathroom, in addition to a modern family bathroom. The second floor hosts an impressive principal bedroom suite, benefiting from a private balcony, en-suite bathroom room and a walk in wardrobe/dressing room.

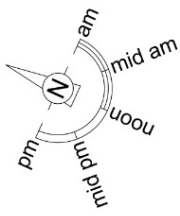
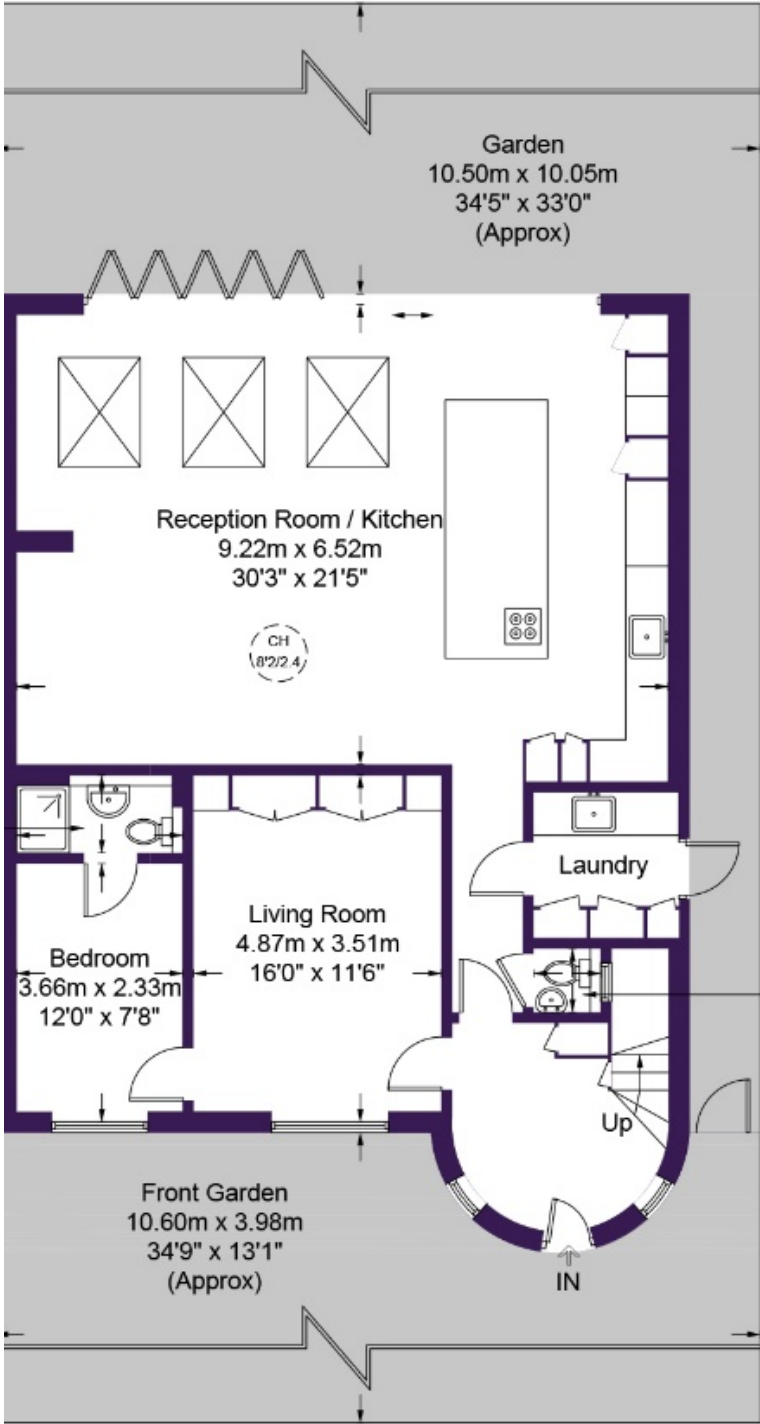
Externally, the rear garden extends to approximately 45 ft, while the front of the property offers off-street parking for several vehicles.



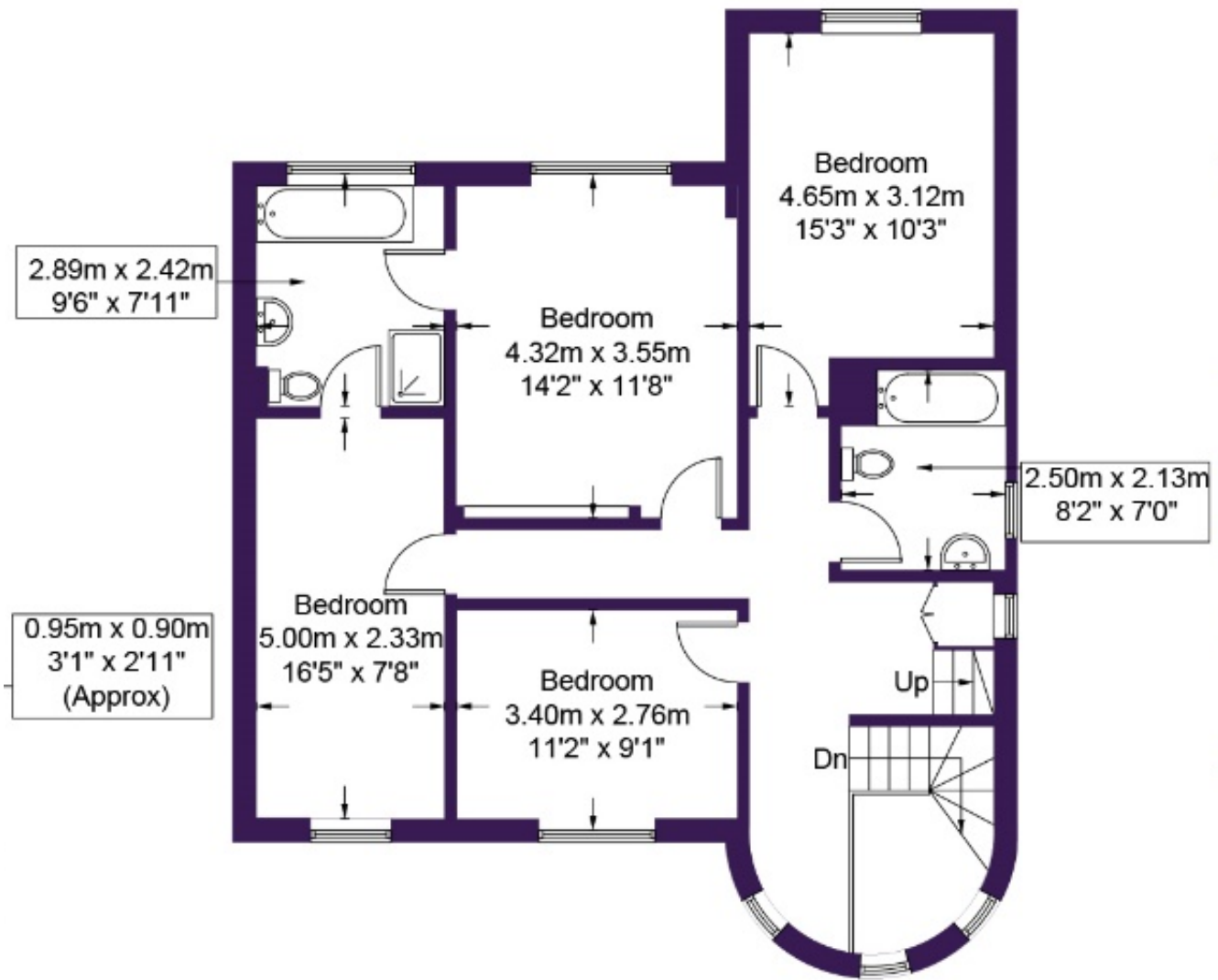




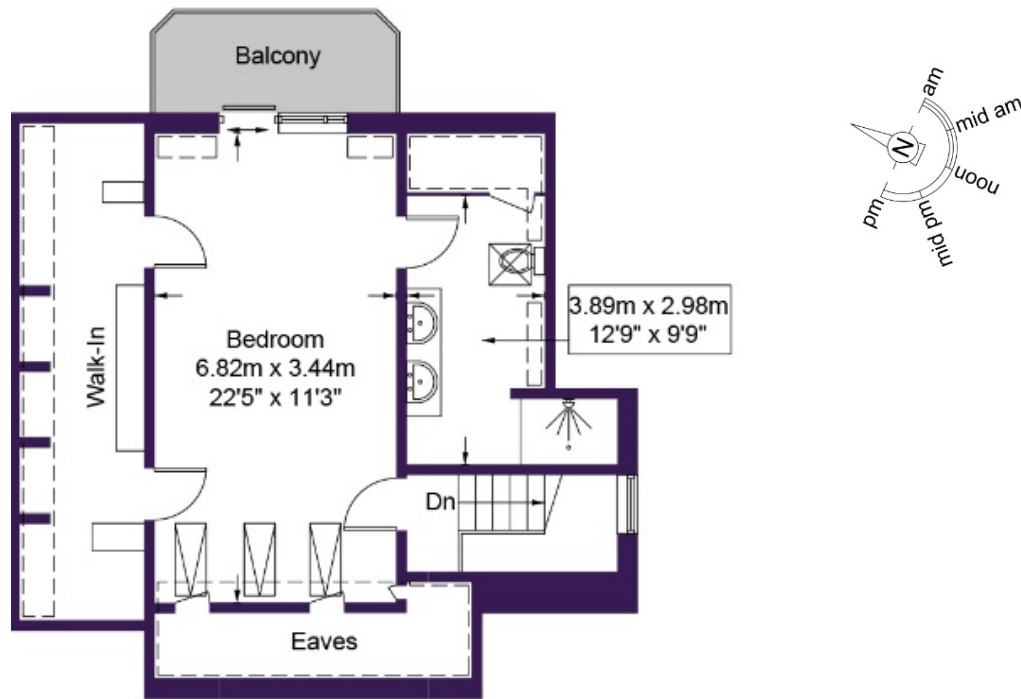




Ground Floor



First Floor



Second Floor

Price: £1,395,000
 Tenure: Freehold
 Beds: 5/6
 Baths: 4
 Reception Rooms: 2
 Total Sq Ft: 2,725
 Council Tax Band: Band G in Barnet
 EPC Rating: C

Distance to;
 Edgware Station: 1 Mile
 Stanmore Station: 1.4 Miles
 Mill Hill Station: 2.1 Miles

Approximate Gross Internal Area = 2725 sq ft / 253.2 sq

VIEWING STRICTLY BY APPOINTMENT ONLY.

PETERMANS TEL: 020 8958 5040 Please Note That The Gas And Electric Appliances Have Not Been Tested To Ensure That They Are In Working Order. All Measurements Are Taken With A Laser Tape Measure And Therefore Subject To Some Variation. We Recommend Any Potential Purchaser Checks These For Themselves To Confirm Their Accuracy

