



Luscombe Maye

Since 1873

# Moreleigh, Totnes

Guide Price £1,250,000

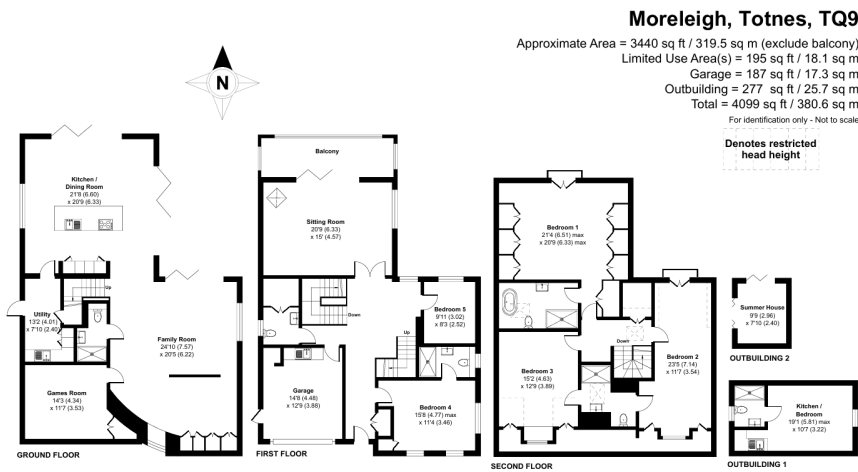
🛏️ 5 🚿 4 🛋️ 4



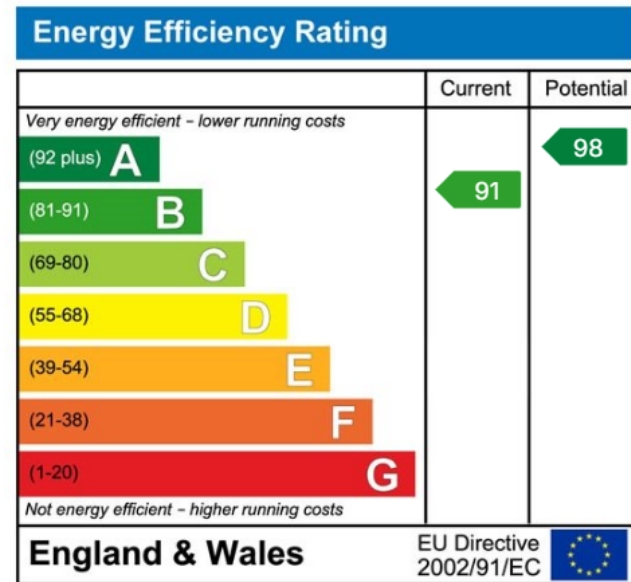
- Far-reaching Uninterrupted Views
- Games Room
- Annex with Shower Room/ Kitchenette
- Ample Driveway Parking
- Top-of-the-Range Appliances
- Six Bedrooms
- Garden Studio
- Garage
- Hot Tub
- Integrated Home Automation System with Lighting Controls & Speakers



Far-reaching Uninterrupted Views | Six Bedrooms | Games Room | Garden Studio | Annex with Shower Room/Kitchenette | Garage | Ample Driveway Parking | Hot Tub | Top-of-the-Range Appliances | Integrated Home Automation System with Lighting Controls & Speakers



Floor plan produced in accordance with RICS Property Measurement 2nd Edition, Incorporating International Property Measurement Standards (IPMS Residential). © richcom 2025. Produced for Luscombe Maye. REF: 1255867



**Totnes:**  
 59 Fore Street, Totnes TQ9 5NJ  
 01803 869920  
 totnes@luscombemaye.com  
[www.luscombemaye.com](http://www.luscombemaye.com)

Important Notice: Luscombe Maye gives notice that: 1. These particulars do not constitute an offer or contract or part thereof. 2. All descriptions, photographs and plans are for guidance only and should not be relied upon as statements or representations of fact. All measurements are approximate and not necessarily to scale. Any prospective purchaser must satisfy themselves of the correctness of the information within the particulars by inspection or otherwise. 3. Luscombe Maye does not have any authority to give any representations or warranties whatsoever in relation to this property (including but not limited to planning/building regulations), nor can it enter into any contract on behalf of the Vendor.