

PETERMANS
LOCAL PROPERTY EXPERTS



Eaton Court,
Edgware Way
Edgware
£315,000
Share Of Freehold

- Two Bedroom, Second Floor Apartment In Warden Assisted Block
- Fully refurbished
- Bright Reception Room With Access To Enclosed Balcony
- Fitted Kitchen
- En-Suite Bathroom
- Separate Shower Room
- New Double Glazing
- Communal Lounge Area
- Chain Free
- 749 Sq Ft

8 THE PROMENADE, EDGWAREBURY LANE, EDGWARE, MIDDLESEX HA8 7JZ
t: 020 8958 5040 e: edgware@petermans.co.uk w: www.petermans.co.uk



NORTH LONDON
HOSPICE



Petermans for themselves and for the vendors or lessors of this property for whom they act, give notice that i) these particulars are a general outline only, for the guidance or prospective purchasers or tenants, and do not constitute the whole or any part of an offer or contract, ii) Petermans cannot guarantee the accuracy of any description, dimensions, references to condition, necessary permissions for use and occupation; and other details contained herein, and prospective purchasers or tenants must not rely on them as statements of fact, and must satisfy themselves as to their accuracy, iii) no employee of Petermans has any authority to make or give any or representation or warranty or enter into any contract whatever in relation to the property, iv) rents, prices, premiums and service charge quoted in these particulars may be subject to VAT in addition, and v) Petermans will not be liable, in negligence or otherwise, for any loss arising from the use of these particulars.



We are pleased to offer this well presented two-bedroom, second floor apartment within a warden-assisted development, which has been completely refurbished. Located in a highly sought-after area, the property enjoys convenient access to central Edgware, a range of local shops, and nearby places of worship. The apartment is offered chain free.

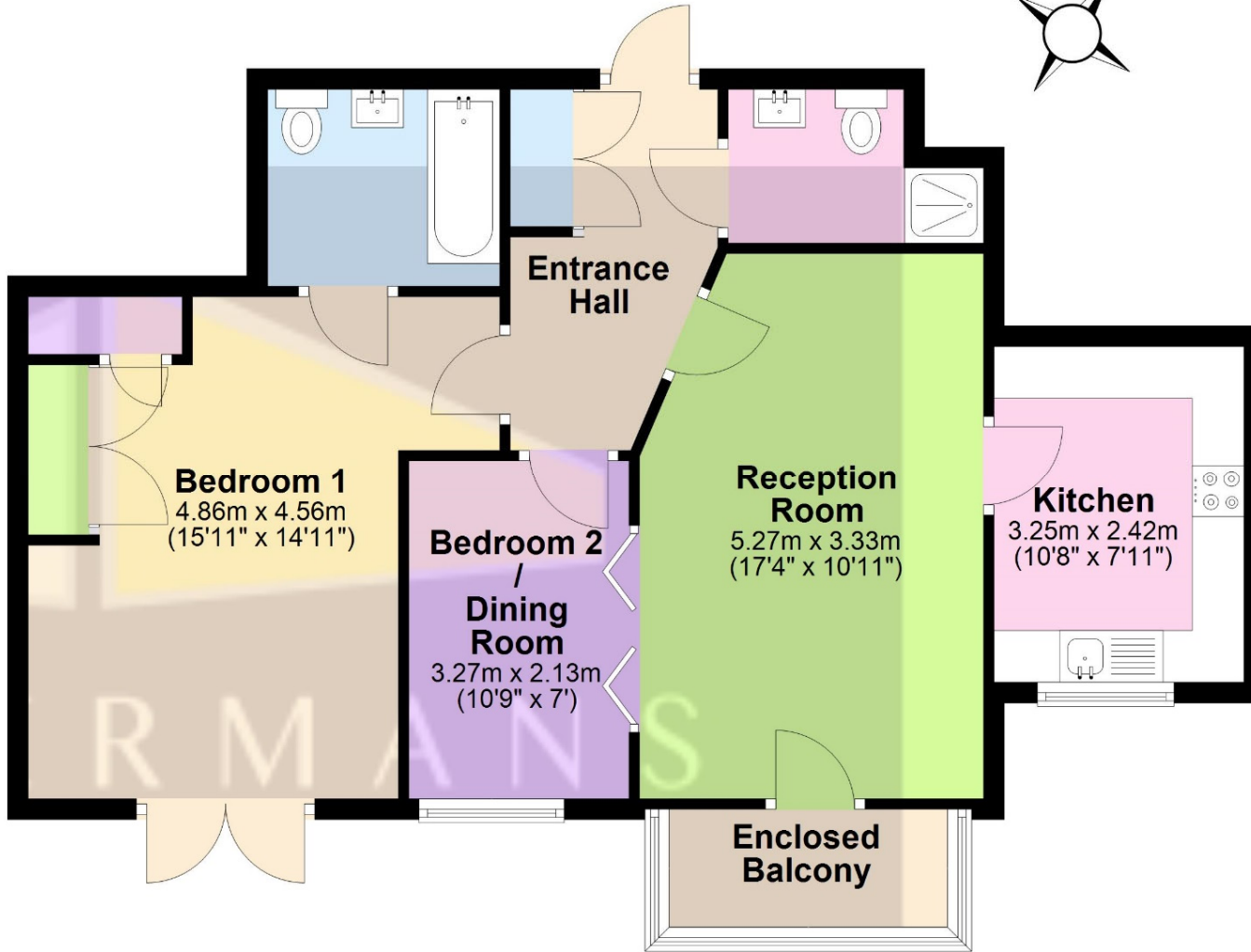


The property offers a bright reception room with access to the fitted kitchen and private, enclosed balcony at the front of the building. There is a second bedroom featuring folding doors opening into the reception room, currently arranged as a dining room. The accommodation is completed by an en-suite bathroom to the primary bedroom and a separate shower room. There is also access to a fully boarded loft for extra storage. Residents also benefit from a communal lounge, hairdressers room and kitchen, landscaped communal gardens, and 24-hour warden assistance.



Second Floor

Approx. 69.6 sq. metres (749.6 sq. feet)



Total area: approx. 69.6 sq. metres (749.6 sq. feet)

VIEWING STRICTLY BY APPOINTMENT ONLY.

PETERMANS TEL: 020 8958 5040 Please Note That The Gas And Electric Appliances Have Not Been Tested To Ensure That They Are In Working Order. All Measurements Are Taken With A Laser Tape Measure And Therefore Subject To Some Variation. We Recommend Any Potential Purchaser Checks These For Themselves To Confirm Their Accuracy

Guide Price: £315,000
Tenure: Share Of Freehold
Beds: 2
Baths: 2
Reception Rooms: 1
Total Sq Ft: 749
Council Tax Band: Band E in Barnet
EPC Rating: Band D
Service Charge: £3,520 per annum
Ground Rent: NA
Lease Length: 995 Years

Distance to:
Edgware Station: 0.7 Miles
Stanmore Station: 1.1 Miles

