



The Chilterns, Great Ashby, Stevenage, SG1 6AZ

IMPRESSIVELY PRESENTED and SPACIOUS Two Bedroom SEMI DETACHED HOME with DRIVEWAY for TWO CARS located in the early phase of Great Ashby WITHIN CATCHMENT OF ROUND DIAMOND SCHOOL, Features include, FITTED KITCHEN/DINER, Lounge Area, Downstairs W.C, TWO DOUBLE BEDROOMS, Family Bathroom & Ensuite, SOUTH FACING GARDEN, Viewing Strongly Suggested.

Price £350,000

The Chilterns, Great Ashby, Stevenage, SG1 6AZ

- COTTAGE STYLE TERRACE HOUSE
- TWO DOUBLE BEDROOMS
- GENEROUS SIZE KITCHEN/DINER
- LOVELY CONDITION
- SOUTH FACING REAR GARDEN
- GREAT ASHBY AREA
- GOOD SIZE LOUNGE
- BATHROOM AND EN-SUITE
- GARAGE & DRIVE
- CLOSE SHOPS, SCHOOL AND WOODLAND WALKS

ENTRANCE PORCH

With access via a partly glazed door, wood effect laminate flooring and a single panel radiator.

DOWNSTAIRS WC

Fitted with a modern suite comprising of a a close coupled WC, a corner positioned hand wash basin and tiled splash back, frosted UPVC double glazed window, tiled flooring, fuse box and a single panel radiator

LOUNGE

13'x 14'6" (3.96mx 4.42m")

This generous size lounge is situated to the front elevation of the house with Antique Oak effect laminate flooring, single and double panelled radiators, UPVC window to the front aspect, smoke alarm and a large under stairs recess.

KITCHEN/DINER

12'10"x 9'7" (3.91m"x 2.92m")

This Good size kitchen/diner benefits from an array of soft grey wall and base units, a stainless steel sink and drainer with chrome mixer tap over, spaces for washing machine, dishwasher and fridge freezer, built in electric oven, four ring gas hob with extractor fan over, tiled splash back, grey wood effect herringbone flooring, UPVC double glazed window to the rear aspect, ample space for dining, a single panel radiator, inset lighting and a partly glazed door to the rear garden

STAIRS TO FIRST FLOOR LANDING

with access to the loft space, a built in storage cupboard and a single panel radiator, doors to all first floor accommodation.

BEDROOM ONE

9'9"x 9' (2.97m"x 2.74m)

A double bedroom with a UPVC double glazed window

to the front aspect, a single panel radiator, modern panelling to either bedside, a built in double wardrobe and an additional built in storage cupboard.

EN-SUITE

comprising of a corner positioned shower unit with chrome shower fittings, a hand wash basin with pedestal and chrome waterfall mixer tap, a close coupled WC with chrome push button flush, a chrome heated towel rail, mostly tiled walls and ceramic tiled flooring and a UPVC frosted double glazed window.

BEDROOM TWO

13'x 8'5" (3.96mx 2.57m")

Again a double bedroom with a UPVC double glazed window to the rear aspect, large recess, a single panel radiator.

BATHROOM

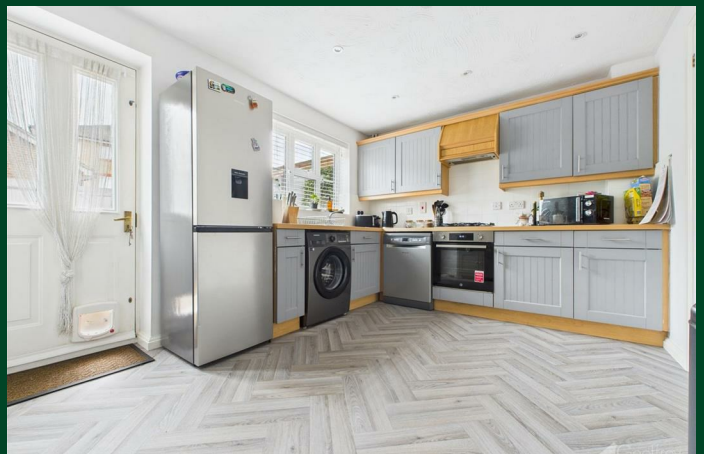
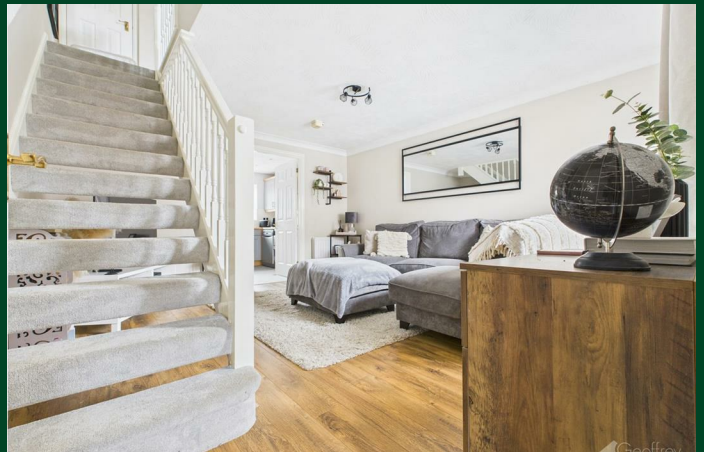
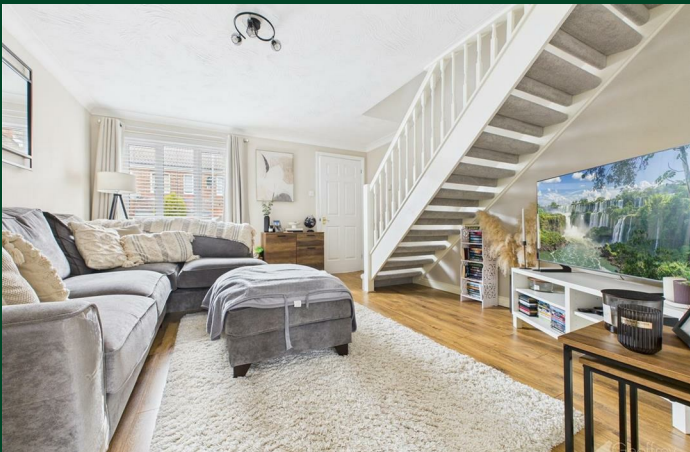
comprising of a panel surround bath with chrome waterfall mixer tap and shower attachment, a hand wash basin with pedestal and chrome waterfall mixer tap, close coupled WC with push button flush, partly tiled walls and ceramic tiled flooring, heated towel rail, extractor fan and inset lighting.

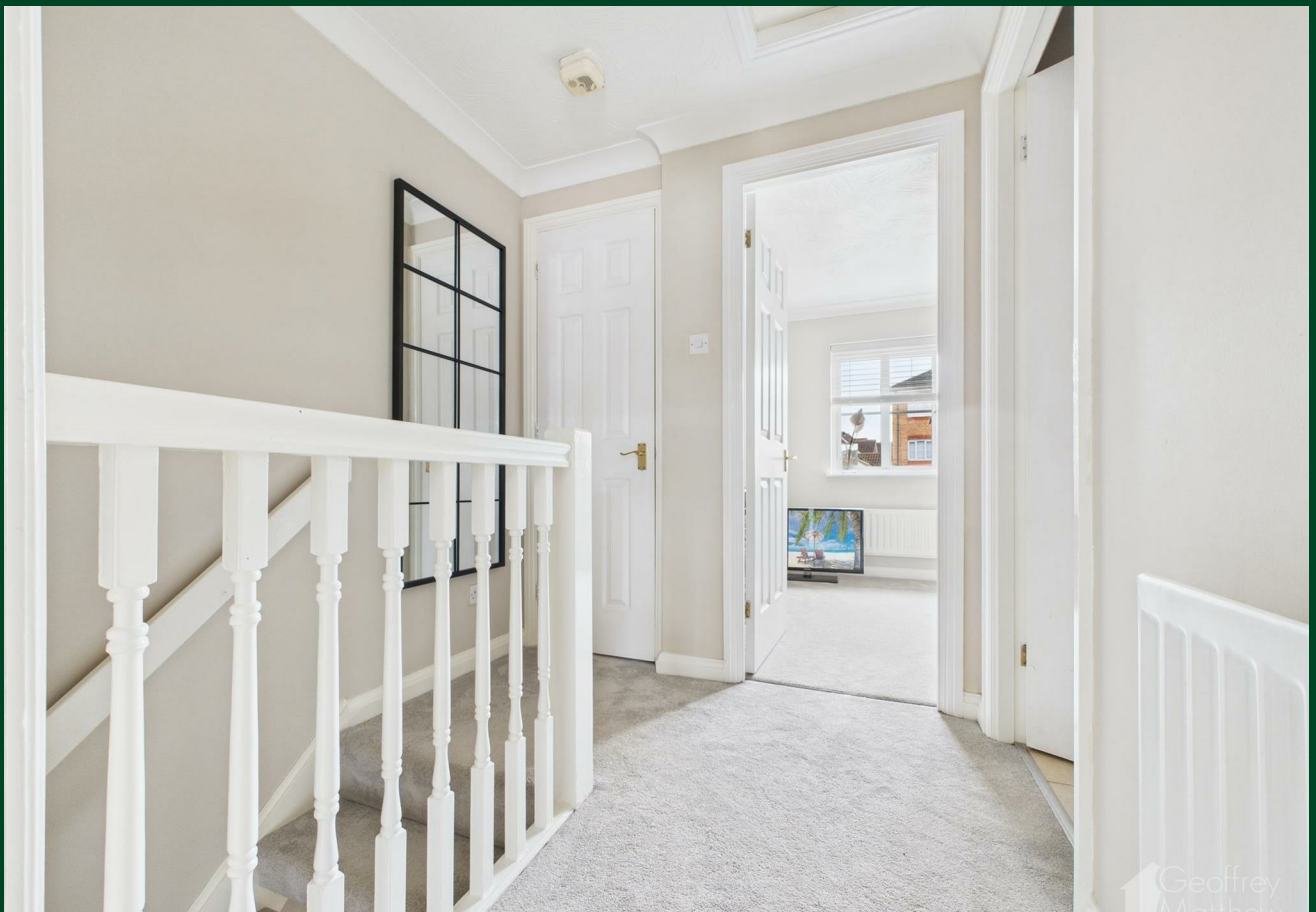
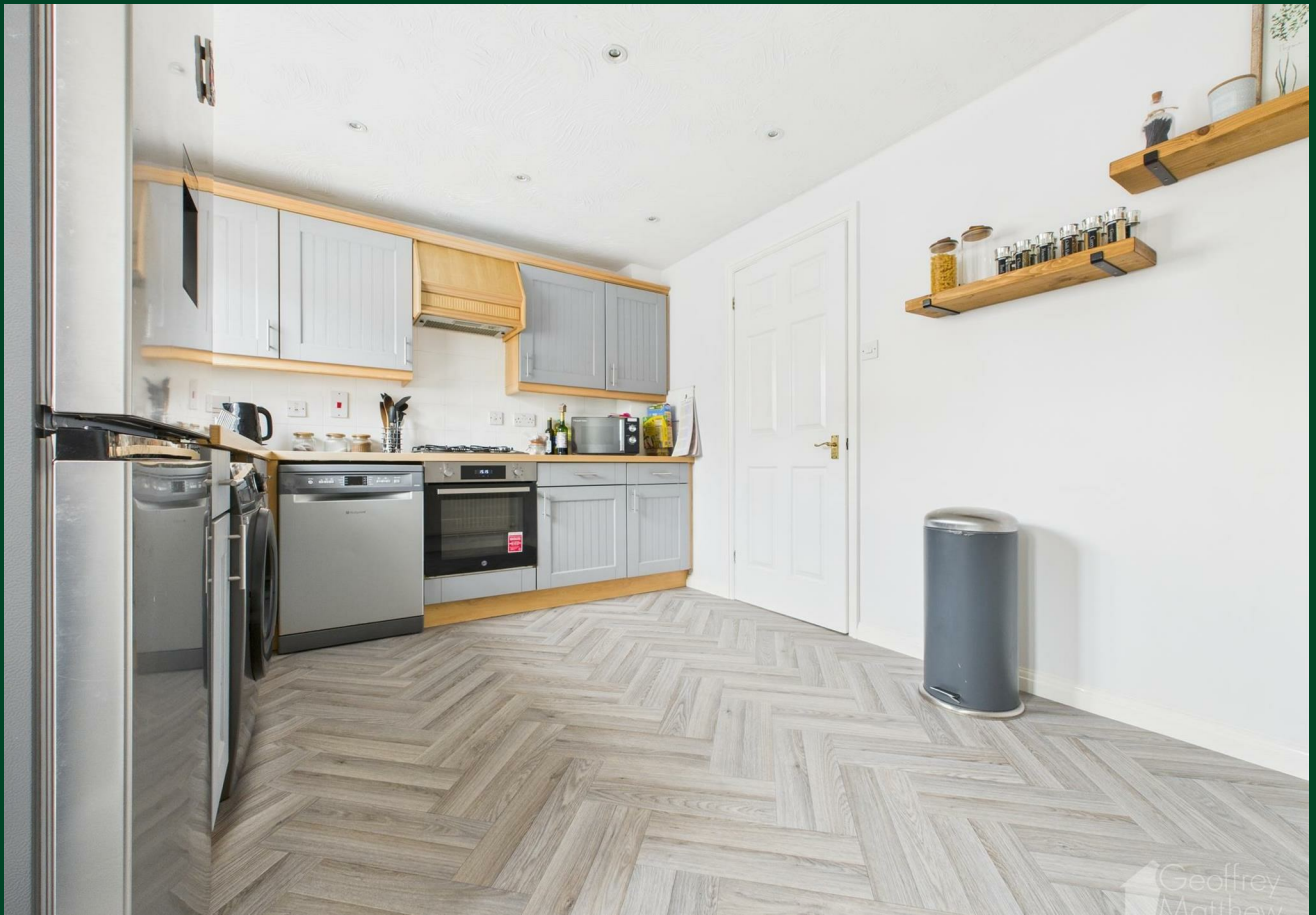
REAR GARDEN

A good size rear garden with a a paved patio raising to a laid lawn surround by planted borders, external tap and gated rear access.

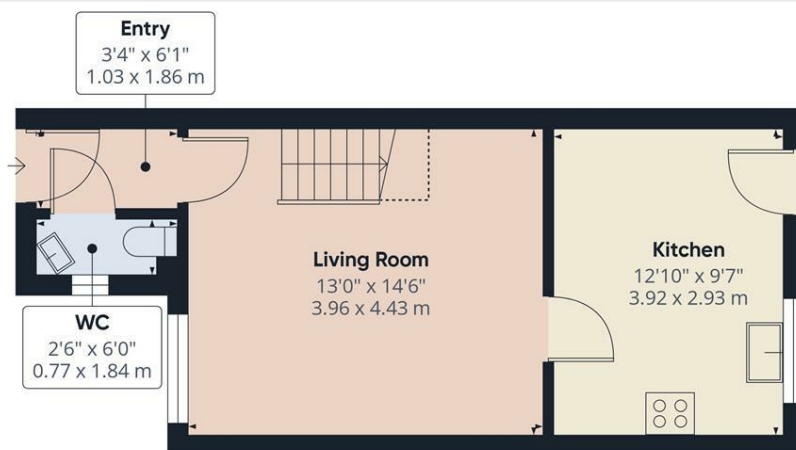
GARAGE AND DRIVE

situated to the rear of the property, with drive for one car, the current vendors have adapted the front so can also park there although this is unofficial.

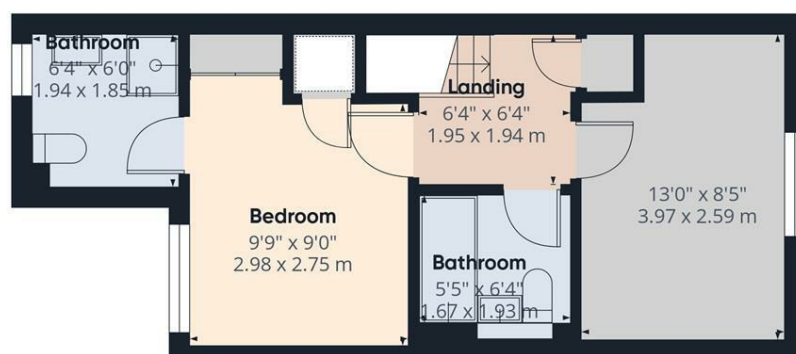




Floor Plan



Floor 0



Floor 1

Approximate total area^m674 ft²62.5 m²

Reduced headroom

15 ft²1.4 m²

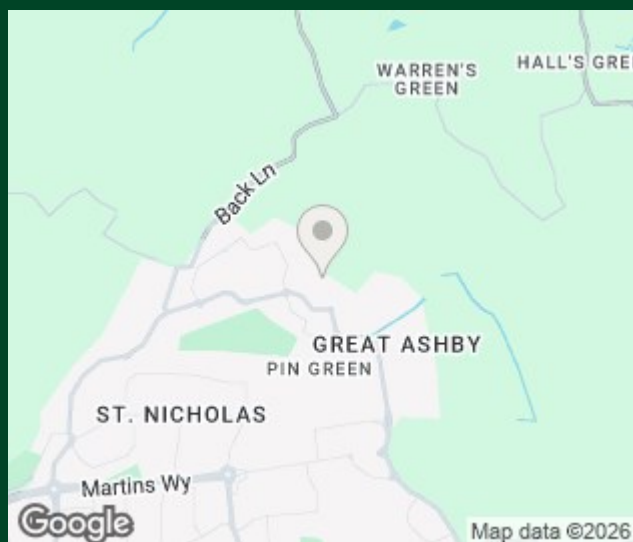
(1) Excluding balconies and terraces.

Reduced headroom

..... Below 5 ft/1,5 m

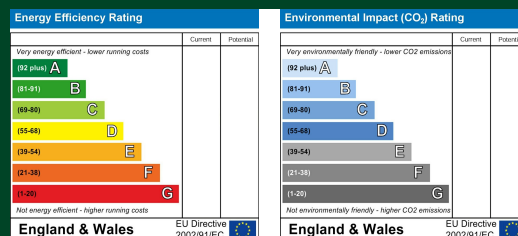
Calculations reference the RICS IPMS 3C standard. Measurements are approximate and not to scale. This floor plan is intended for illustration only.

GIRAFFE360



Council Tax Details

Band:



These particulars, whilst believed to be accurate are set out as a general outline only for guidance and do not constitute any part of an offer or contract. Intending purchasers should not rely on them as statements of representation of fact, but must satisfy themselves by inspection or otherwise as to their accuracy. No person in this firm's employment has the authority to make or give any representation or warranty in respect of the property.

Old Harlow: 01279 444988 Email: harlow@geoffreymatthew.co.uk
Great Ashby: 01438 740111 Email: greatashby@geoffreymatthew.co.uk