



New Crane Wharf, 14 New Crane Place, London E1W 3TU



New Crane Wharf, London E1W 3TU

Leasehold (961 years remaining)

A generously proportioned apartment in the heart of Wapping's riverside quarter, where historic docklands character meets contemporary London living. This bright residence offers secure underground parking.

Key Features

- 1 Bedroom, 1 Bathroom
 - Vibrant colours throughout
 - Riverside apartment
 - Council Tax: **E**
 - Service Charge: **£3,078 P/A**
 - Ground Rent: **£302 P/A**
 - Excellent transport links
 - EPC: **C**
-

Nestled within the distinguished New Crane Wharf development on the edge of the Thames, this one-bedroom apartment captures the essence of Wapping's remarkable transformation from working docklands to one of East London's most characterful waterfront neighbourhoods. The building embraces the industrial heritage of the area while providing modern residential comfort in a sought-after riverside setting.

Spanning 513 square feet, this thoughtfully designed residence offers a comfortable living space that maximizes natural light and functionality. The apartment benefits from the convenience of dedicated underground parking, a valuable asset in this historic riverside location where such provision is highly prized. The secure parking ensures ease of access while maintaining the peaceful atmosphere of this waterfront enclave.

Life at New Crane Wharf places you at the heart of Wapping's unique character, where cobbled streets and converted warehouses tell the story of London's maritime past. The Thames Path runs along your doorstep, offering riverside walks towards Tower Bridge in one direction and Limehouse in the other.





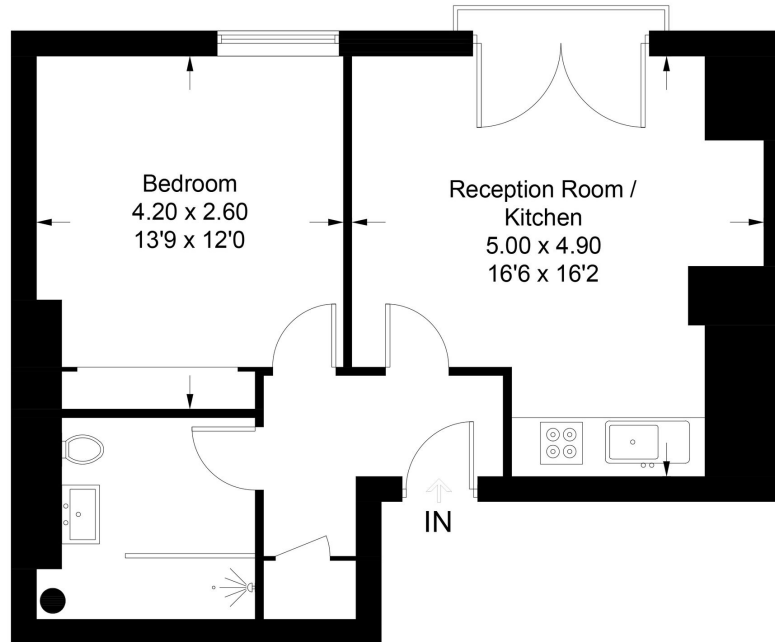




New Crane Wharf



Approximate Gross Internal Area = 47.7 sq m / 513 sq ft



Second Floor

Illustration for identification purposes only, measurements are approximate, not to scale. Fourlabs.co © (ID1301810)