



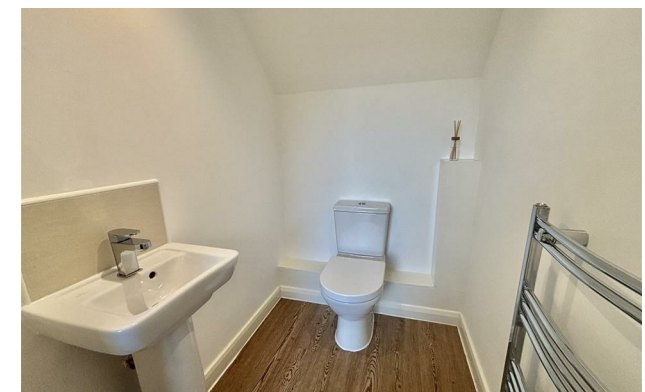
Jordan fishwick

Mossy Lea Drive
Derbyshire



Mossy Lea Drive Derbyshire SK13 7SX

£1,200 Per Calendar Month



The Property

Available From 02nd August .Stunning and recently built by Wiggett Homes, located within the Old Glossop conservation area. Property in brief entrance vestibule with Wc. Open plan lounge dining and kitchen with a range of modern units and built in appliances. Upstairs there are two double bedrooms and a family bathroom with bath and over bath shower. Outside you will find a fully enclosed private rear garden. Must be seen to appreciate the quality. Historic photographs . Call now to secure your viewing

Directions

- Available from 02nd August 2026
- Two double bedrooms
- Luxury Bathroom
- Old Glossop Location
- Fully Fitted Kitchen
- Council Tax C & EPC B
- Off road Parking
- Countryside Walks & Views

Postcode - SK13 7SX

EPC Rating - B

Floor Area - sq ft

Local Authority - HIGH PEAK

Council Tax - C





These particulars are believed to be accurate but they are not guaranteed and do not form a contract. Neither Jordan Fishwick nor the vendor or lessor accept any responsibility in respect of these particulars, which are not intended to be statements or representations of fact and any intending purchaser or lessee must satisfy himself by inspection or otherwise as to the correctness of each of the statements contained in these particulars. Any floorplans on this brochure are for illustrative purposes only and are not necessarily to scale.

Offices at: Offices at Chorlton, Didsbury, Disley, Hale, Glossop, Macclesfield, Manchester Deansgate, Manchester Whitworth Street, New Mills, Sale, Wilmslow and Withington

172 Ashley Road, Hale, Cheshire, WA15 9F

01619291994

halemanagement@jordanfishwick.co.uk
www.jordanfishwick.co.uk