



BEAUFORT GREEN

# Barons Court Road, W14

£500,000



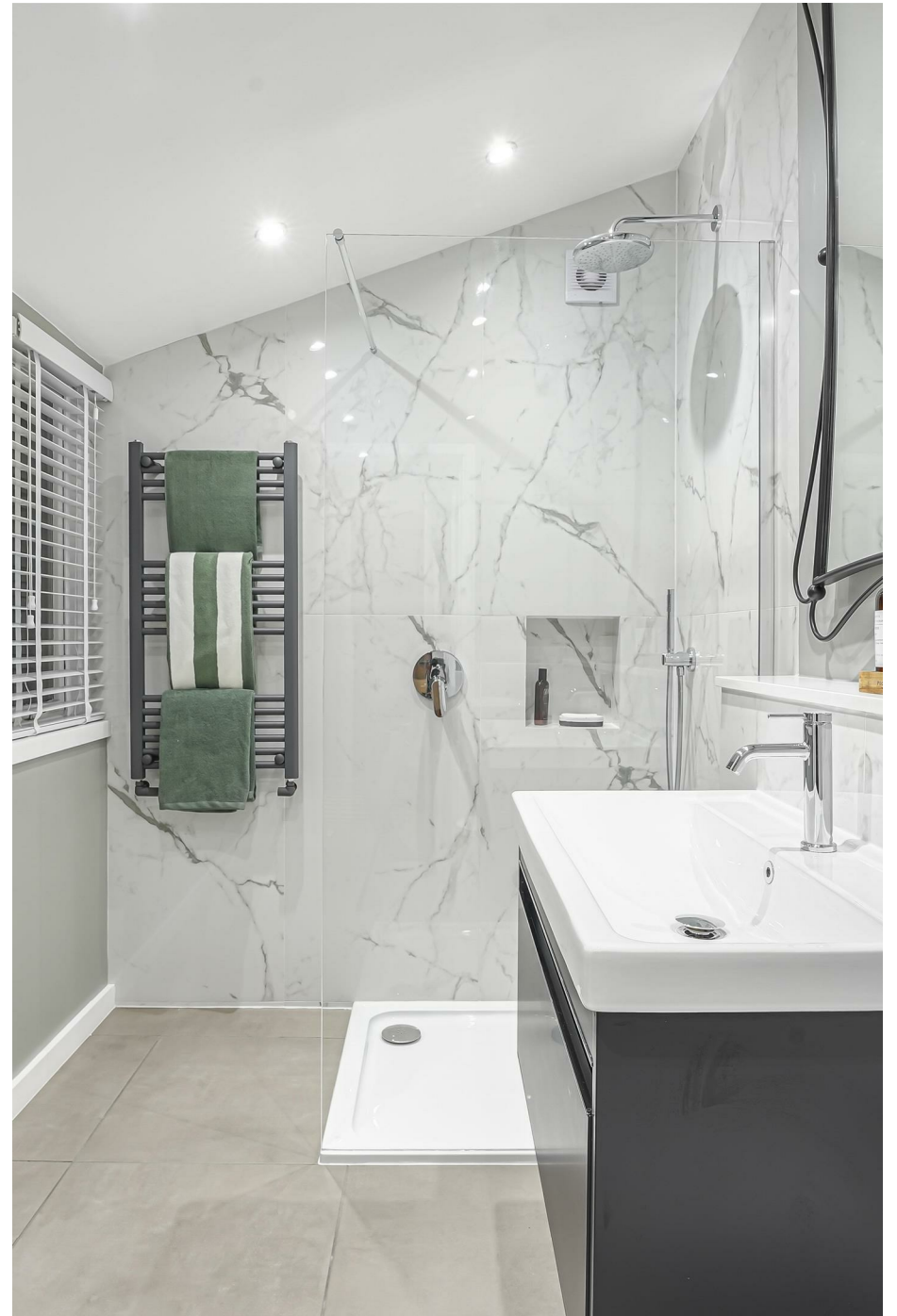
Nestled in the heart of Barons Court, this immaculate, newly refurbished raised ground-floor apartment brings together contemporary design, practical detail and a highly convenient location. High ceilings and large windows enhance the sense of light and space, creating a calm and welcoming atmosphere from the moment you step inside.

The open-plan living area has been thoughtfully designed for both comfort and everyday ease, with a sleek kitchen fitted with integrated Samsung appliances, a double oven, integrated microwave, wine fridge, dishwasher and hot water tap. The living space is equally considered, with USB/USBC charging points, built-in Bluetooth speakers and ample storage throughout.

The generous bedroom offers excellent built-in storage, bedside reading lights, Bluetooth speakers and plenty of natural light, creating a peaceful retreat at the end of the day. A beautifully appointed bathroom completes the accommodation, finished in a clean, contemporary style with elegant fixtures.

Positioned moments from the amenities of Barons Court, the apartment is also just a short walk from local favourites including Gail's and HG Walter, one of London's most highly regarded butchers, adding to the everyday appeal of this well-connected address.





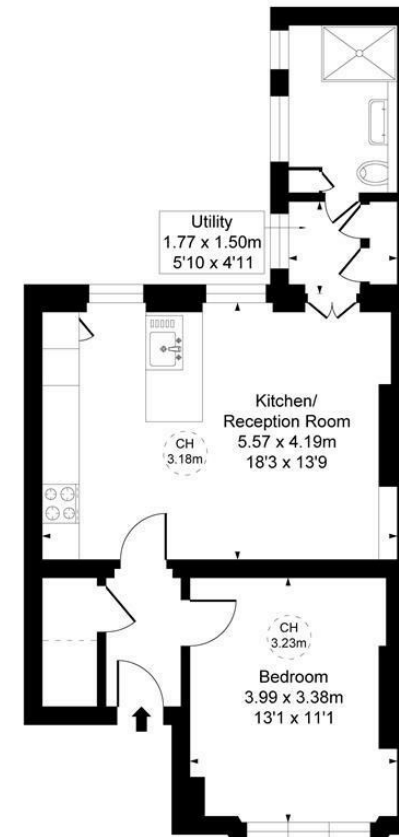
# BEAUFORT GREEN



# BEAUFORT GREEN

Barons Court Road, W14

Approximate Gross Internal Area  
52.56 sq m / 566 sq ft  
( Excluding restricted height  
under 1.5m 51.43 sq m 554 ft )  
( CH = Ceiling Heights)



Ground Floor

## At a Glance.

- Newly Refurbished
- Immaculate Condition
- Raised Ground Floor
- 3.2m Ceiling Heights
- Reception Room

This plan is not to scale. It is for guidance and not for valuation purposes.  
All measurements and areas are approximate only, and have been prepared in accordance with the current edition of the RICS Code of Measuring Practice.

# BEAUFORT GREEN

02074594100

[charlie@beaufortgreen.co.uk](mailto:charlie@beaufortgreen.co.uk)

---

263 New Kings Road  
London  
SW16 1DR