

Head Office:
Dixon Kelley Estate Agents
1 Penn Court
Station Road, West Moors
Dorset. BH22 0JJ

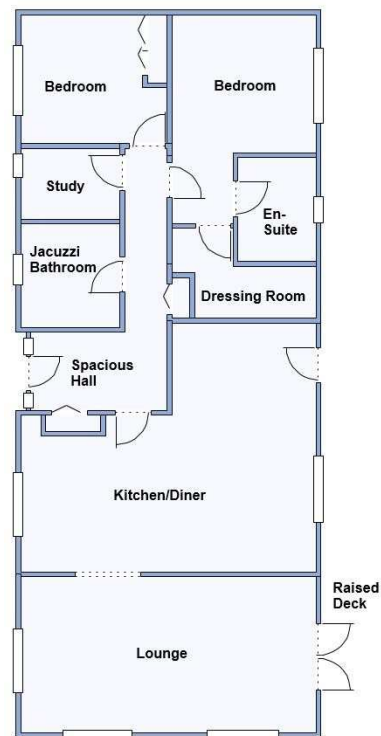
Telephone: 01202 877511

DORSET PARK HOMES

DRAFT

www.dorsetparkhomes.com

1 Lookout Park, Stoborough, Wareham. BH20 5AZ



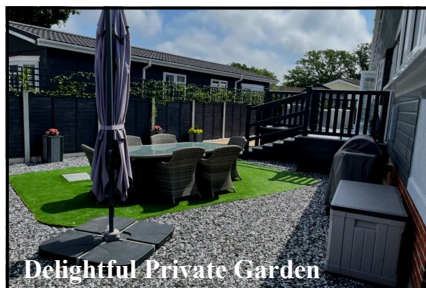
This drawing has been prepared for diagrammatic purpose only. Not to scale.

2-Bedroom Park Home - approx 52' x 22'

Accommodation & approximate room dimensions:

- **Spacious Entrance Hall:** Cloaks cupboard
- **Kitchen/Diner:** approx 21'2" x 17' max. A stunning room with a superb range of floor and wall cupboards. Built-in double oven, microwave, hob, plate warmer & cooker hood. Integrated washing machine & American fridge/freezer. Water softener & Wine chiller. Door to raised deck & garden.
- **Lounge:** approx 21'2" x 11'. Double doors to large Deck. 3 bay windows.
- **Inner Hall:** Linen Cupboard. Hatch to loft space.
- **Bedroom 1:** approx 13'5" x 10'8" max. Dresser unit. Wall mounted Air conditioning unit.
- **Large Dressing Room:** Fitted shelves & hanging rails
- **Luxury En-Suite Shower Room**
- **Bedroom 2:** approx 10'4" x 9'1". Fitted wardrobes.
- **Luxury Jacuzzi Bathroom**
- **Gas Central Heating & PVCu Double-Glazing**
- **Quality Fixtures & Fittings Plus Quality Furniture**
- **Stylish Interior Design & Vaulted Ceilings**
- **Large Sun Deck & Delightful Private Garden**
- **Driveway for 2 cars with EV charger & Large Shed**
- **Age Restriction 45+ Pets Considered**

Delightful Outside Space



Price: £289,950

Pitch Fee: approx £311.72 per month

Subject to Annual Review

Council Tax Band: 'A'

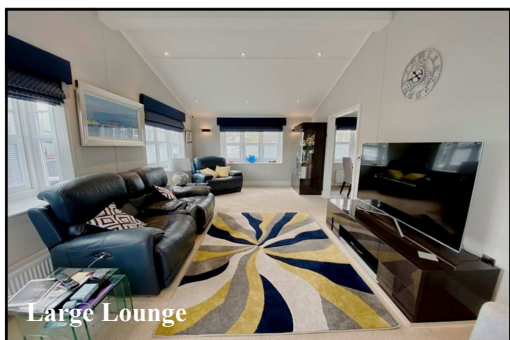
Tenure: 1983 Mobile Homes Act Agreement

VIEWING STRICTLY BY APPOINTMENT WITH THE VENDOR'S AGENT Dorset Park Homes 01202 877511

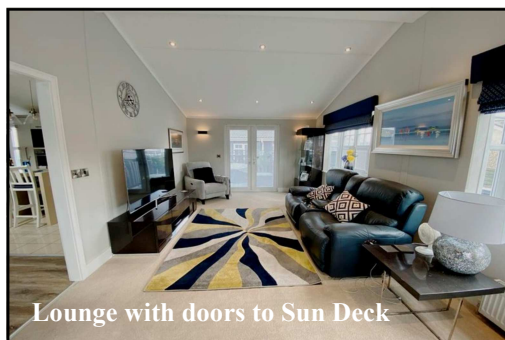
IMPORTANT NOTE: These particulars are believed to be correct but their accuracy is not guaranteed. They do not form part of any contract. Nothing in these particulars shall be deemed to be a statement that the property is in good structural condition or otherwise, nor that any of the services, appliances, equipment or facilities are in good working order or have been tested. Purchasers should satisfy themselves on such matters prior to purchase. Ref.W04738

The recommended specialist in Park Home sales
Partner: Simon Dixon





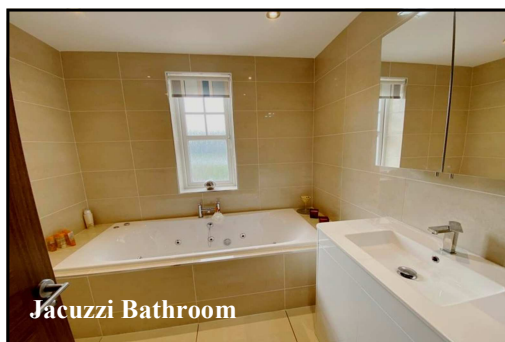
Large Lounge



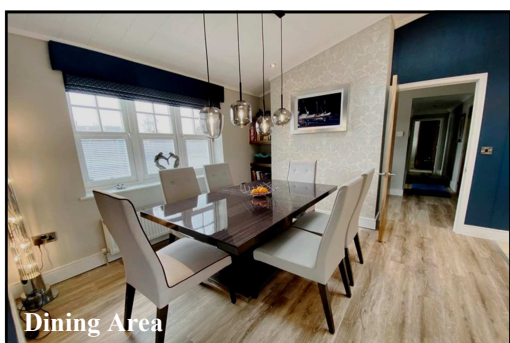
Lounge with doors to Sun Deck



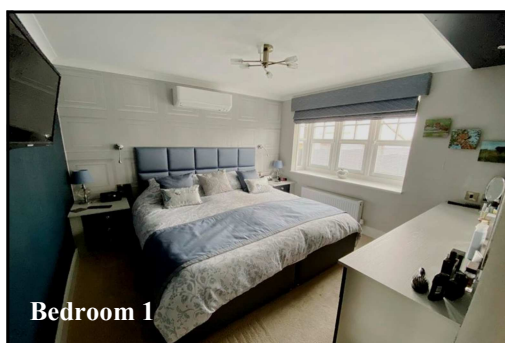
Superb Kitchen/Diner



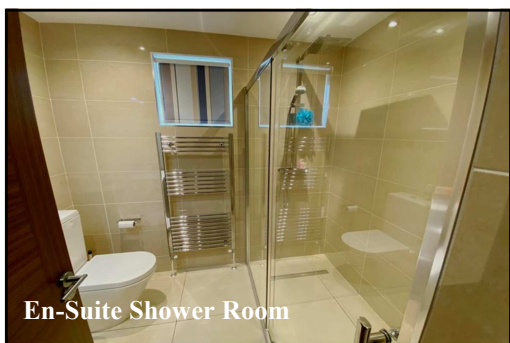
Jacuzzi Bathroom



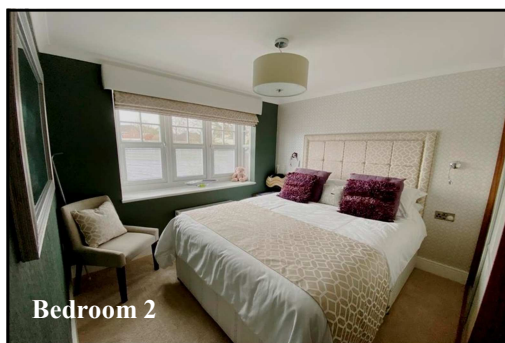
Dining Area



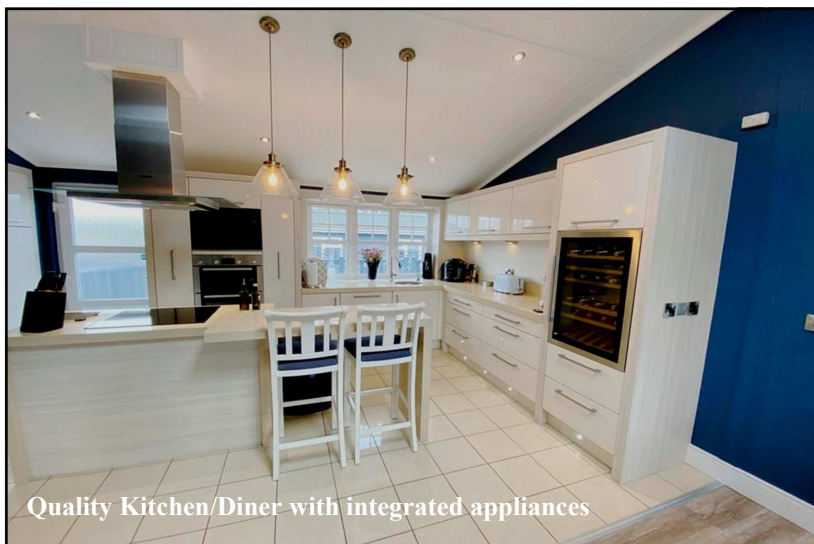
Bedroom 1



En-Suite Shower Room



Bedroom 2



Quality Kitchen/Diner with integrated appliances

Prestige 'Grand Symphony' Park Home approx 52' x 22' Manufactured 2017
Stylish interior with high quality fixtures & fittings throughout, vaulted ceilings, fitted blinds & Ring security system.
Large Deck & Private Garden with artificial lawn.

Popular Residential Park with access to countryside walks & near to historic Wareham Town Centre. Short drive to the seaside resorts of Swanage, Weymouth & Poole.