



Tottenham Mews, W1T

£700,000

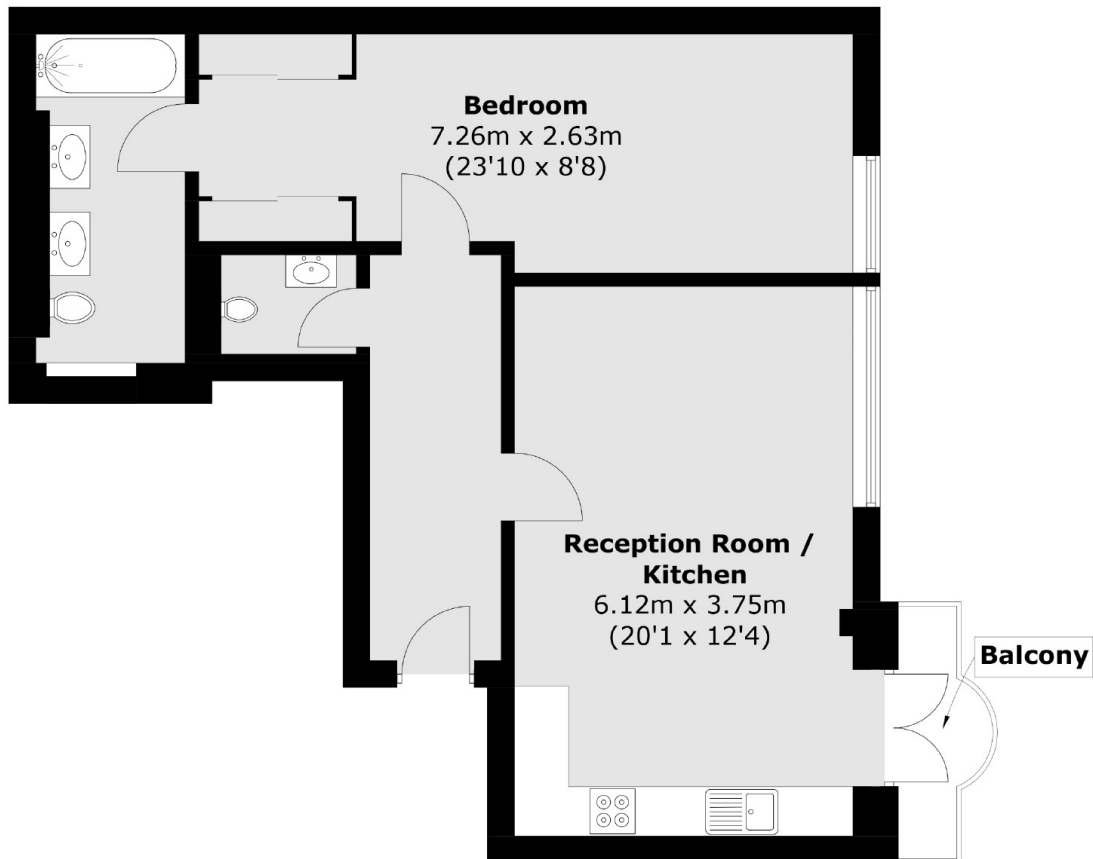
Set within a charming mews in the heart of the sought-after Charlotte Street Conservation Area, this attractive warehouse conversion offers stylish contemporary living. The well-appointed one-bedroom apartment further benefits from a private balcony, creating an ideal urban retreat.

Located moments from Goodge Street station, residents will enjoy easy access across London as well as the vibrant bars, cafés, and restaurants of Fitzrovia right on the doorstep.

Features

- Mews Location
- Video Entry Phone
- Passenger Lift
- Westerly Facing Balcony
- Bedroom with En Suite
- 999 Year Leasehold

Tottenham Mews, London, W1T



Total area (approx.): 58.4 sq. m (628.6 sq. ft)
Balcony : 2.2 sq. m (23.7 sq. ft)