



STEPHENSON BROWNE

**Sandhurst Avenue,  
Wistaston, Crewe**

CW2 8FB



**Offers Over £210,000**

## Description

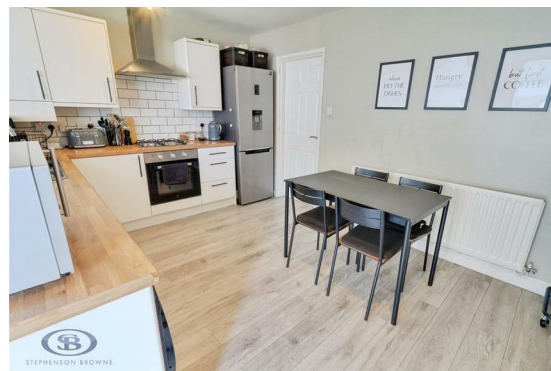
Stephenson Browne are delighted to present this well-maintained three-bedroom semi-detached home situated on Sandhurst Avenue, offering well-balanced accommodation ideal for families, first-time buyers, or those looking to upsize.

The ground floor comprises a welcoming lounge to the front of the property, providing a comfortable and relaxing space with plenty of natural light. To the rear, the kitchen is well-appointed with a range of fitted units, offering ample storage and worktop space for everyday use. Leading on from the kitchen is a bright and airy conservatory, creating a versatile additional reception area, perfect for dining, entertaining guests, or enjoying views over the garden throughout the year.

To the first floor, the property offers three well-proportioned bedrooms, including a generous principal bedroom that provides a comfortable retreat. The remaining bedrooms offer flexible accommodation to suit a variety of needs, whilst a family bathroom, fitted with essential fixtures, completes the upstairs accommodation.

Externally, the property benefits from a thoughtfully designed rear garden, featuring a low-maintenance astro-turfed lawn which provides a neat and usable outdoor space all year round. In addition, a patio area runs down the side of the property, offering further space for seating, outdoor dining, or entertaining. The overall outdoor space is both practical and easy to maintain, making it ideal for busy lifestyles.

This property represents a fantastic opportunity to acquire a well-presented



home in a popular residential location, and early viewing is highly recommended.



### Viewing

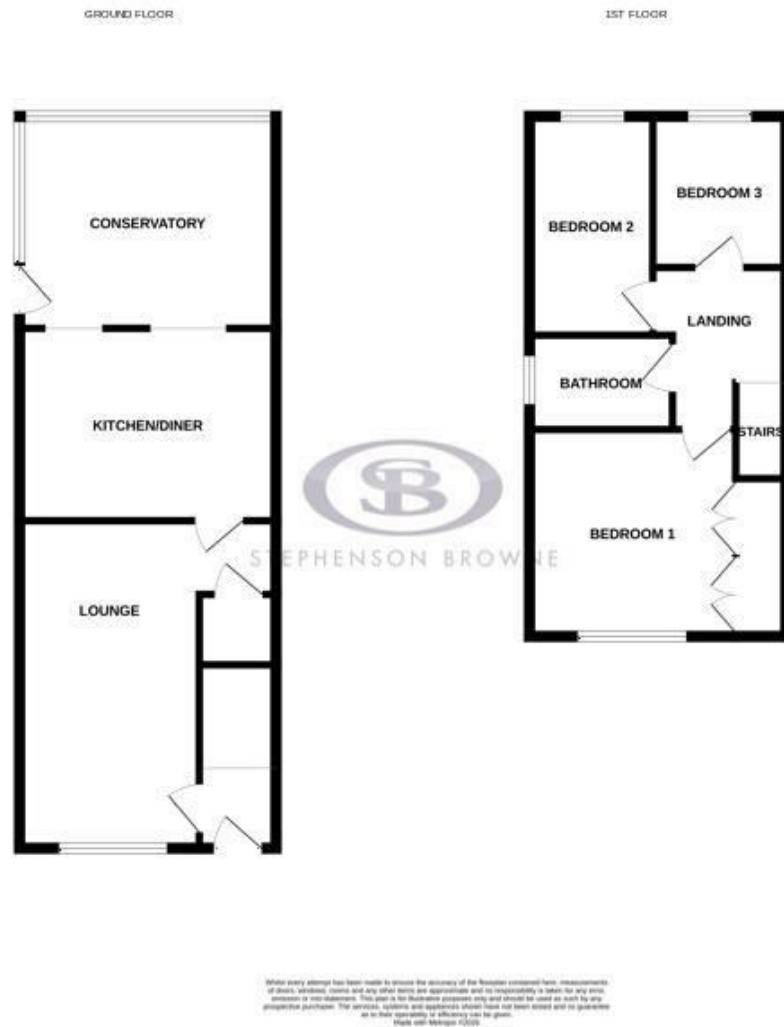
Please contact our office using the details provided on the final page if you are interested in booking a viewing or require further information.



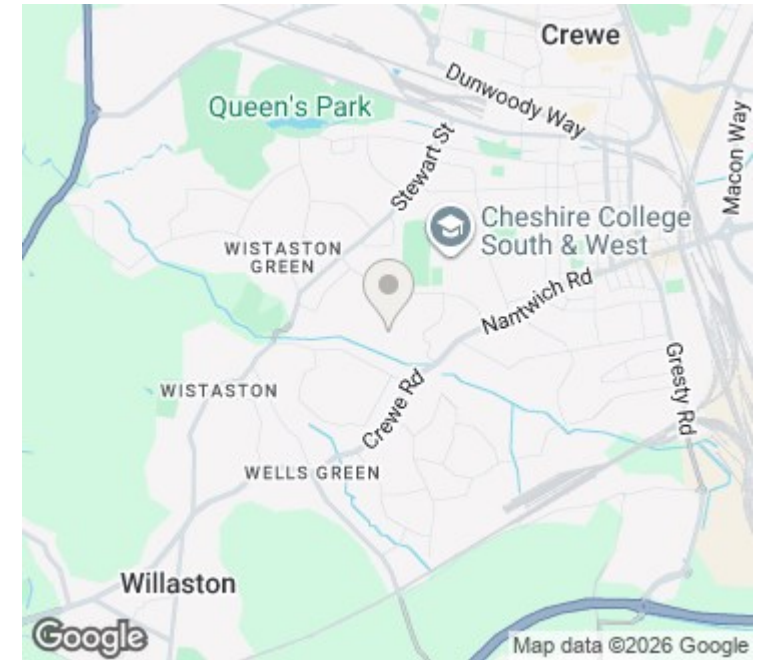
STEPHENSON BROWNE



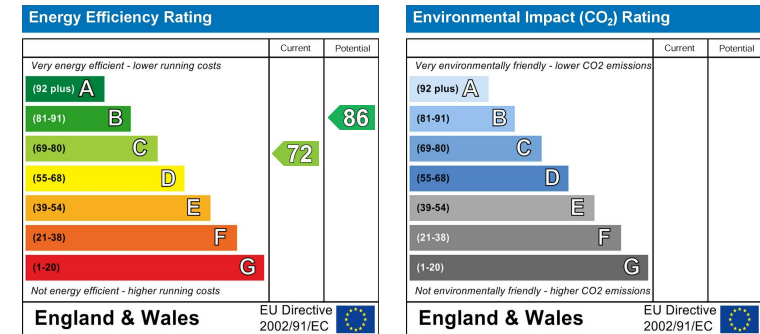
# Floorplans



# Area Map



# EPC Rating



NOTICE: Stephenson Browne for themselves and for the vendors or lessors of this property whose agents they are give notice that: (1) the particulars are set out as a general guideline only for the guidance of intending purchasers or lessees, and do not constitute, nor constitute part of, an offer or contract; (2) all descriptions, dimensions, references to condition and necessary permissions for use and occupation, and other details are given in good faith and are believed to be correct but any intending purchasers or tenants should not rely on them as statements or representations of fact but must satisfy themselves by inspection or otherwise as to the correctness of each theme; (3) no person in the employment of Stephenson Browne has any authority to make representation or warranty whatever in relation to this property. (4) fixtures & fittings are subject to a formal list supplied by the vendors solicitors. **Referring to:** Move with Us Ltd **Average Fee:** £123.64

**T: 01270 252545 E: crewe@stephensonbrowne.co.uk**

[www.stephensonbrowne.co.uk](http://www.stephensonbrowne.co.uk)