



Albert Road, N22

£1,025,000

Set across the first and second floors of a bright and spacious converted 1930s house, is this three/four-bedroom maisonette with off street parking, private outside space as well as a Juliette balcony in the main bedroom and own private entrance. The flat boast four double bedrooms, a separate kitchen, spacious reception room and two bathrooms, it's an ideal family home.

Ideally located within the catchment areas for Rhodes Avenue Primary and Alexandra Park Secondary, this property is also close to Bounds Green Tube (Piccadilly Line) and Alexandra Palace Main Line Station with direct links to Moorgate and Old Street. Muswell Hill Broadway is just a short distance away.

Features

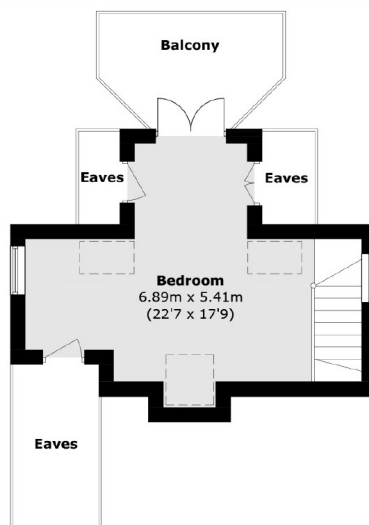
- Four Bedrooms
- Maisonette
- Off Street Parking
- Share Of Freehold
- Roof Terrace
- Outstanding School Catchment



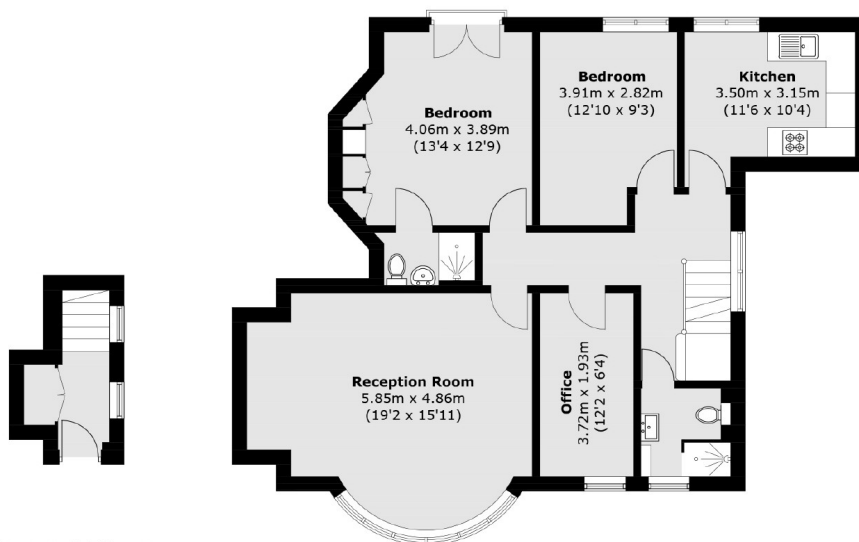
Albert Road, N22



Albert Road, London, N22



Second Floor



Ground Floor

First Floor

Total area (approx.): 115.0 sq. m (1,237.6 sq. ft)
(Excluding Eaves)
Balcony: 7.8 sq. m (83.9 sq. ft)