



HUNTERS[®]

HERE TO GET *you* THERE

4 3 1 B

CURLEW GROVE

CURLEW GROVE, DARWEN

£345,000



Hunters are privileged to welcome this beautiful detached home to the market. Located on an eye catching corner plot, having been built to the highest quality throughout providing a first class home for you and your family on one of Darwen's most sought after developments.

The property comprises; entrance hallway, spacious lounge with bay window & feature fire, upgraded dining kitchen, utility room and a ground floor WC. From the hallway there is access to a single garage with a sliding up & over door to the front. The garage is currently used as a gym area & storage but does have potential to develop into further living space. As we get to the first floor there is an L shape landing giving access to four good size bedrooms, a master en-suite shower room & a main family bathroom. Two of the bedrooms benefit from fitted storage & there are a range of storage cupboards around the house.

To the rear of the house you will find a generous sized lawn with some flagged patio. To the front you have a double driveway with a garden strip running along the right side of the house.

Situated off Cranberry Lane the property is located convenient for local shops, schools and access to the town centres of Darwen and Blackburn. There is easy access to the M65 motorway link as well as A roads to neighbouring towns such as Bolton.

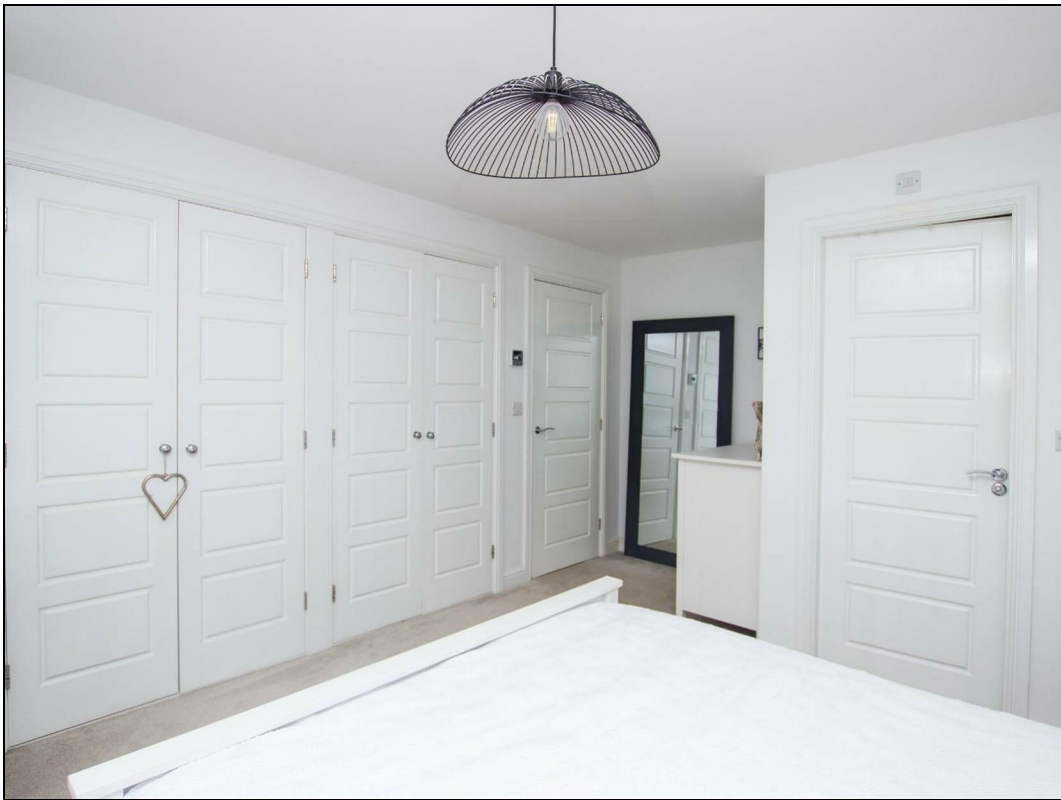
OUR THOUGHTS - *'A highly desirable development with beautiful scenery'*

KEY FEATURES

- Stunning Detached Home
- Desirable Development
 - Four Bedrooms
- Family Bathroom & En-Suite
- Spacious Lounge With Feature Fire
- Stylish Dining Kitchen With Utility
 - Garage & Double Driveway
 - Private Rear Garden
 - Corner Plot
- No Onward From June 2026

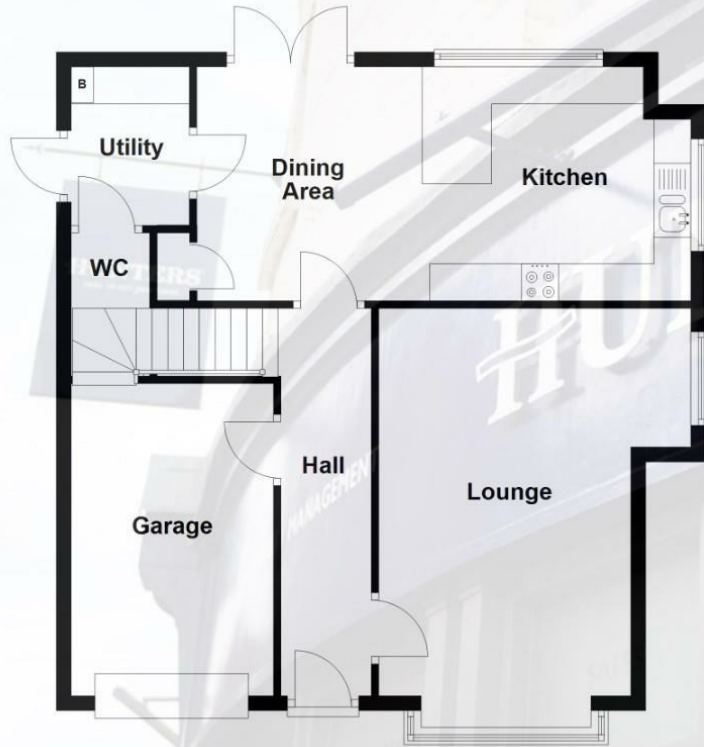






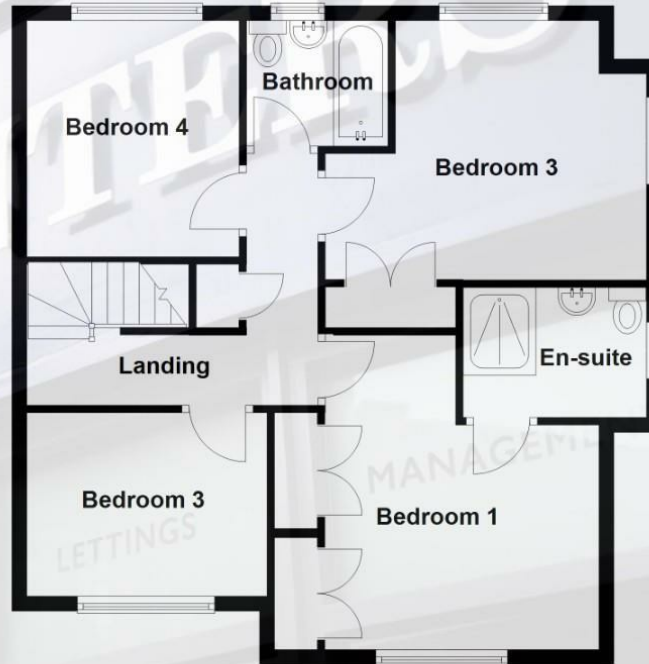
Ground Floor

Approx. 68.3 sq. metres (735.2 sq. feet)



First Floor

Approx. 66.1 sq. metres (711.6 sq. feet)



Total area: approx. 134.4 sq. metres (1446.8 sq. feet)

