



**WALTON  
ROBINSON**



**To Let**

## 110 Grosvenor Road, Jesmond NE2 2RQ

£1,695 PCM

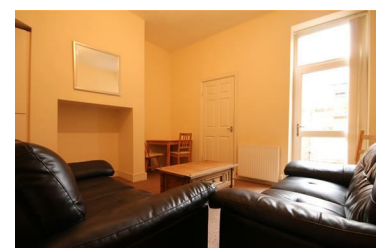


£135 PPPW - Ground floor apartment available to rent in Jesmond. There are three double bedrooms and a bathroom with shower over the bath. The property has modern furnishings with a spacious open plan lounge and kitchen. The flat benefits from a private rear yard, gas central heating and UPVC double glazing. Permit parking is also available directly from the council.

The property is located in the heart of Jesmond and has a number of amenities on its door step with bars, restaurants and shops within walking distance. There are also fantastic transport links into the City Centre and beyond within close proximity.

\*\*All property descriptions are assumed correct at time of publication. Any reference to property details, specifications or other inclusions are subject to change and may be altered at any given time.

- £130 PPPW / £1,695 PCM
- Three Double Bedrooms
- Open Plan Living
- Close to Osborne Road
- EPC Rating - D
- Ground Floor Flat
- Spacious Lounge
- Modern Furnishings
- Available 14/09/2026
- Utilities £33 PPPW



101 Percy Street, City Centre, Newcastle upon Tyne, NE1 7RY  
T: 01912431000 | Email: [enquiries@seekersproperty.co.uk](mailto:enquiries@seekersproperty.co.uk) | [www.waltonrobinson.com](http://www.waltonrobinson.com)