



Lancaster Road, W11

£660,000

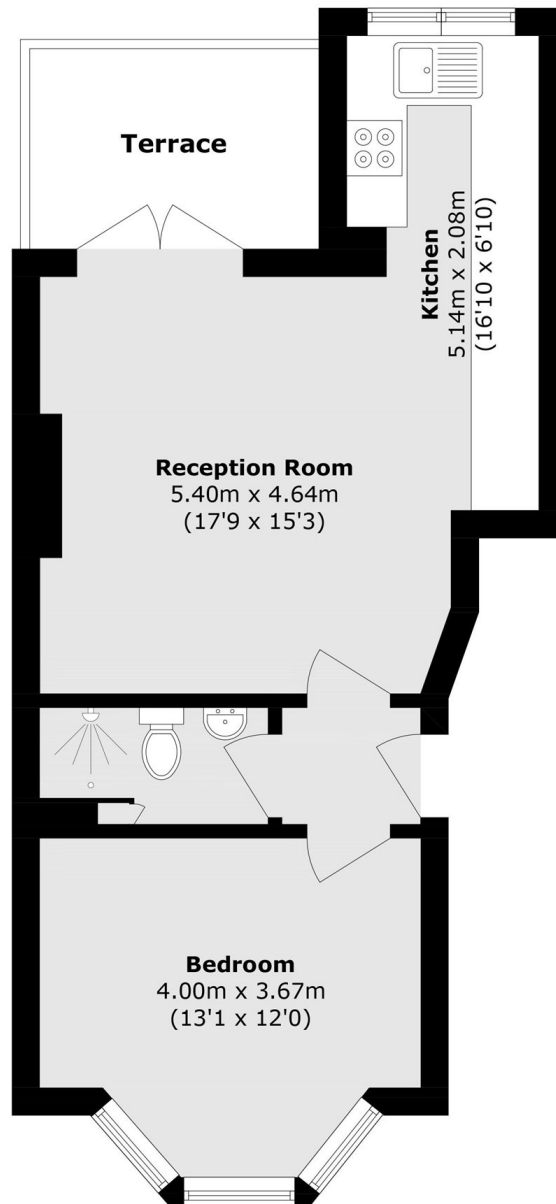
A fantastic opportunity to acquire a raised ground floor one bedroom apartment in a Victorian conversion. The property is well-proportioned, has been recently decorated to an excellent standard and features high ceilings throughout. The spacious open plan reception and kitchen, with room to dine, leads onto a private terrace. The Service charge is on an AD HOC basis.

Lancaster Road is perfectly positioned just a few minutes walk from Ladbroke Grove station (Hammersmith & City line), and surrounded by boutique shops, and vibrant cafés of Portobello and Golborne Road.

Features

- Share Of Freehold
- Private Terrace
- High Ceilings
- Raised Ground Floor
- Good Transport Links
- Notting Hill

Lancaster Road, London, W11



Raised Ground Floor

Total area (approx.): 47.3 sq. m (509.1 sq. ft)

Terrace area (approx.): 6.8 sq. m (73.1 sq. ft)