

RIVERHOMES

Strand on the Green
Chiswick W4

£1,500,000
Freehold



Strand on the Green Chiswick W4

From the moment you step inside, the river takes centre stage. The principal rooms at the front open wide to sweeping Thames views, boats drifting past, light shifting through the day, winter skies rolling in, summer evenings glowing. It is a house that feels connected to the water in every season.

The main house carries all the easy charm you hope for here. Elegant reception rooms made for watching the tide come and go. A kitchen and dining space to the rear that works beautifully for family life, opening towards the garden and feeling

calm and grounded against the drama of the river beyond. Upstairs, well proportioned bedrooms continue the story, with those front rooms offering some of the best views on the stretch.

Behind the house, a separate garage building has been cleverly arranged as a self contained studio apartment. Whether used for independent young adults, visiting friends, creative workspace or as a rental income opportunity, it adds a layer of flexibility that is increasingly rare along this stretch of river.

KEY FEATURES

4 bedrooms

2 bathrooms

Light filled kitchen and living room

Separate garage building

Rear garden

Direct views of the River Thames

Strand on the Green conservation area

Walking distance to riverside pubs, historic wharves and tree-lined path

Excellent transport links to Kew Bridge Station and Gunnersbury Station





ENERGY PERFORMANCE CERTIFICATE

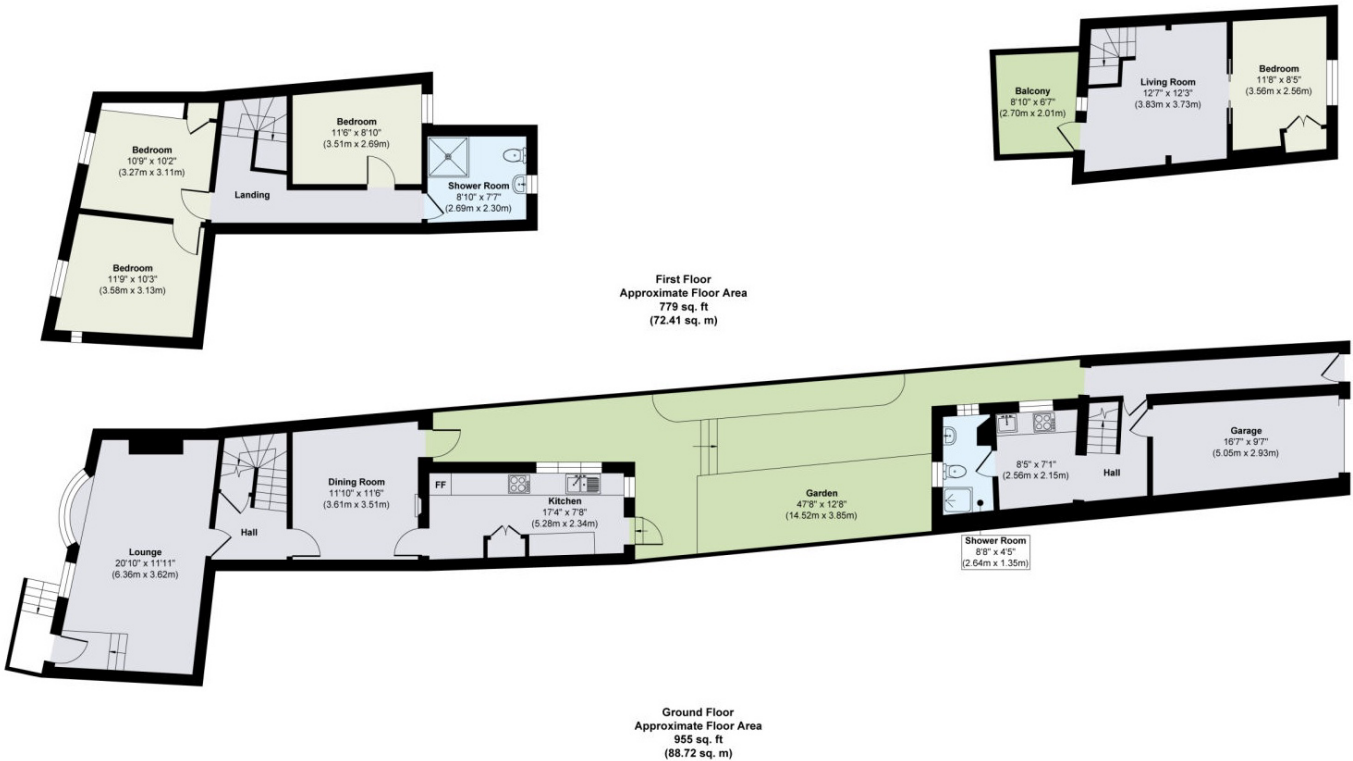
KEY INFORMATION

Local authority: London Borough of Hounslow

Internal area: 1,734 sq. ft. / 104.79 sq. m.

No. of bedrooms: 4

Council tax band: F - £3,012.85 per annum approx.



World Waterside Ltd trading as riverhomes for themselves and its clients give notice that 1: They are not authorised to make or give any representations or warranties in relation to the property either here or elsewhere, either on their own behalf or on behalf of their client or otherwise. 2: These particulars do not form part of any offer or contract and must not be relied upon as statements or representations of fact. Any areas, measurements or distances are approximate. The text, photographs and plans are for guidance only and are not necessarily comprehensive. 3: It should not be assumed that the property has all necessary planning, building regulation or other consents and any services, equipment or facilities have not been tested. 4: Lease details, service charges, ground rent (where applicable) and council tax are given as a guide only and should be checked and confirmed by your Solicitor prior to exchange of contracts. 5: They assume no responsibility and any intending purchasers or tenants must satisfy themselves by inspection or otherwise as to the correctness of each of the statements contained within these particulars. If you require clarification of any points please contact us.