



36 Hereward Street, Bourne
£150,000

 **NEWTON FALLOWELL**

36 Hereward Street

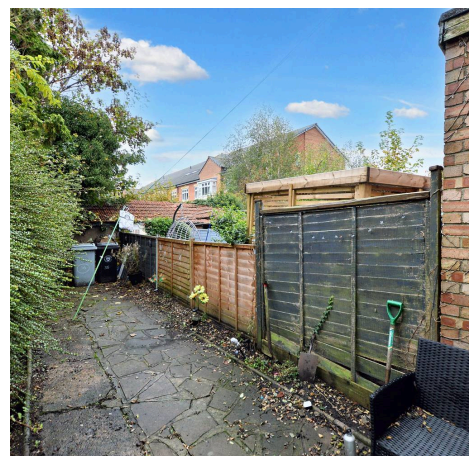
Bourne, Bourne

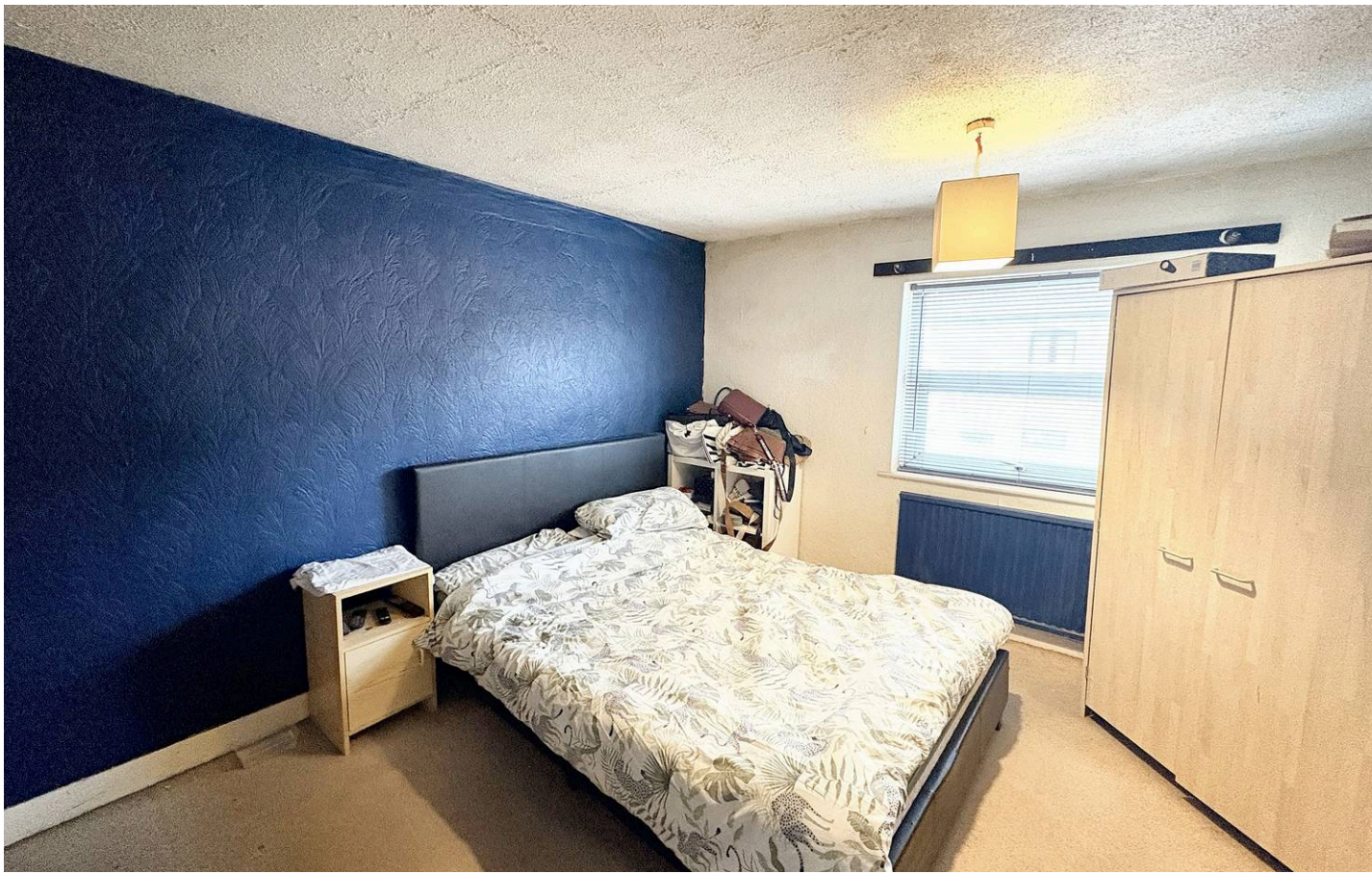
Located in the heart of Bourne, this two-bedroom property offers well-proportioned living space and represents a great opportunity for first-time buyers or investors. Boasting two large double bedrooms and a great downstairs accommodation this is a must see property!

The ground floor features two spacious reception rooms. The front lounge includes a large window and a feature fireplace. This leads through to the dining room, with access to the staircase.

To the rear is the modern kitchen with built in appliances and high quality floor and wall units. Beyond the kitchen is a small rear hallway with access to main bathroom with WC and wash basin, and a back door providing access to the garden.

Upstairs, the property offers two double bedrooms. Externally, the property includes a generous rear garden, mainly laid to patio.





Lounge

11' 10" x 10' 10" (3.60m x 3.30m)

Dining Room

10' 10" x 13' 1" (3.30m x 4.00m)

Kitchen

6' 3" x 10' 2" (1.90m x 3.10m)

Bathroom

6' 7" x 5' 8" (2.00m x 1.72m)

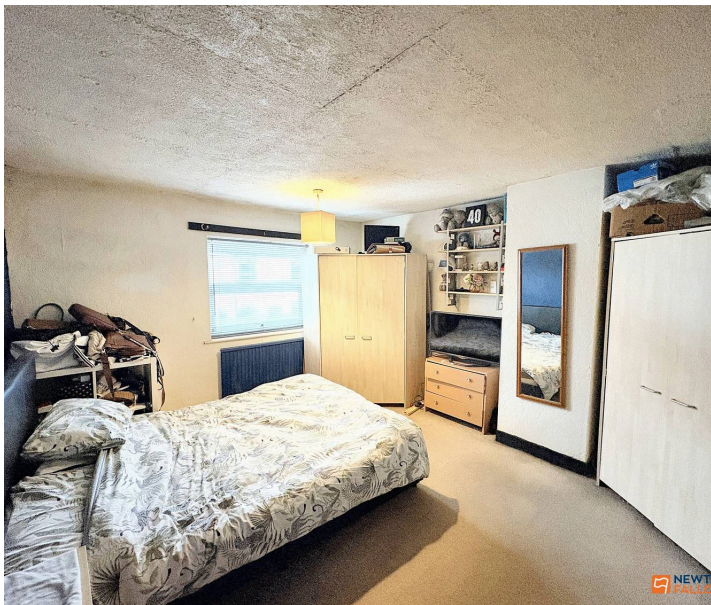
Landing

Bedroom One

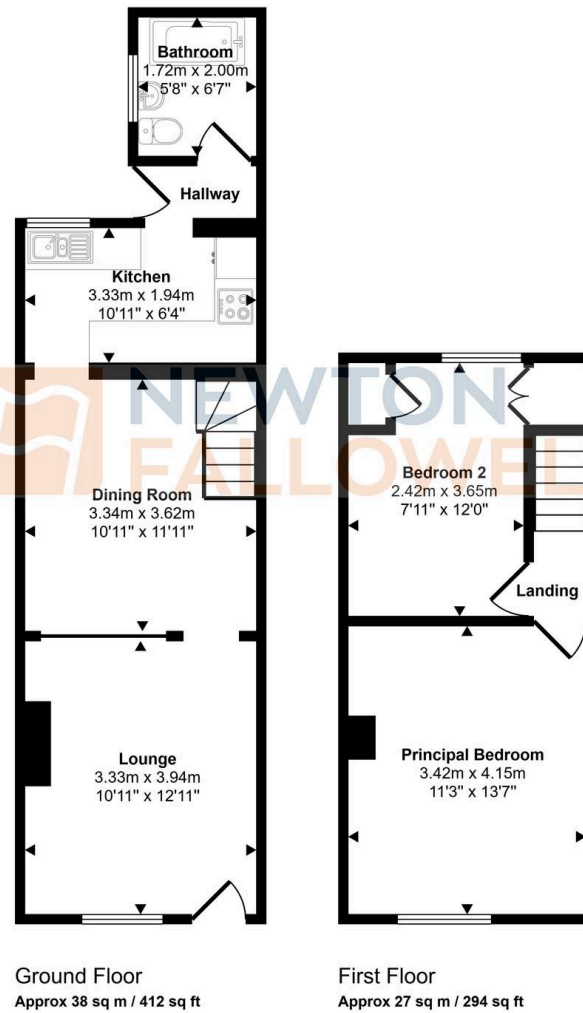
11' 3" x 13' 7" (3.42m x 4.15m)

Bedroom Two

7' 11" x 12' 0" (2.42m x 3.65m)



Approx Gross Internal Area
66 sq m / 706 sq ft



This floorplan is only for illustrative purposes and is not to scale. Measurements of rooms, doors, windows, and any items are approximate and no responsibility is taken for any error, omission or mis-statement. Icons of items such as bathroom suites are representations only and may not look like the real items. Made with Made Snappy 360.

Newton Fallowell - Bourne

Newton Fallowell, 2 North Street - PE10 9EA

01778 422567 · bourne@newtonfallowell.co.uk · newtonfallowell.co.uk/bourne