



Lorne Gardens, W11

£692 Per week

Dexters



Lorne Gardens, W11

An exceptionally spacious and beautifully presented two double-bedroom ground-floor apartment, located within a prestigious gated development in the heart of Notting Hill/Holland Park. This sought-after property benefits from modern interiors, generous living space, and the convenience of an on-site porter.

The property is located within walking distance of both Holland Park and Shepherds Bush Underground Stations and The Westfields Shopping Centre is across the road.

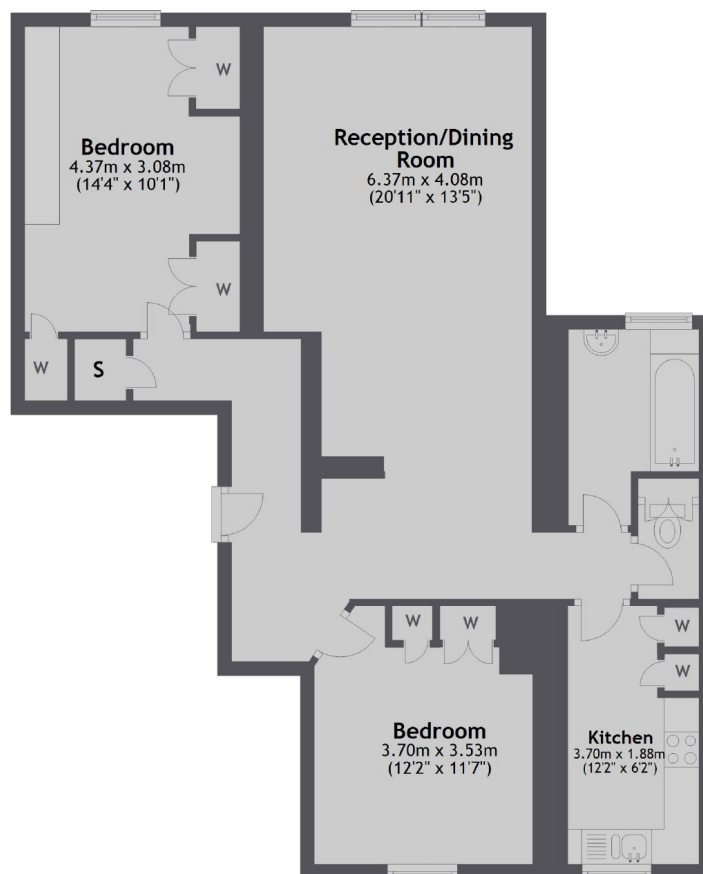
Features

- Two Double Bedroom
- Ground Floor
- New Separate Kitchen
- Wood Floors
- Porter
- Gated Development



Lorne Gardens, London, W11

Raised Ground Floor



Total area: approx. 82.3 sq. metres (885.8 sq. feet)