



Manson Place, SW7

£750,000

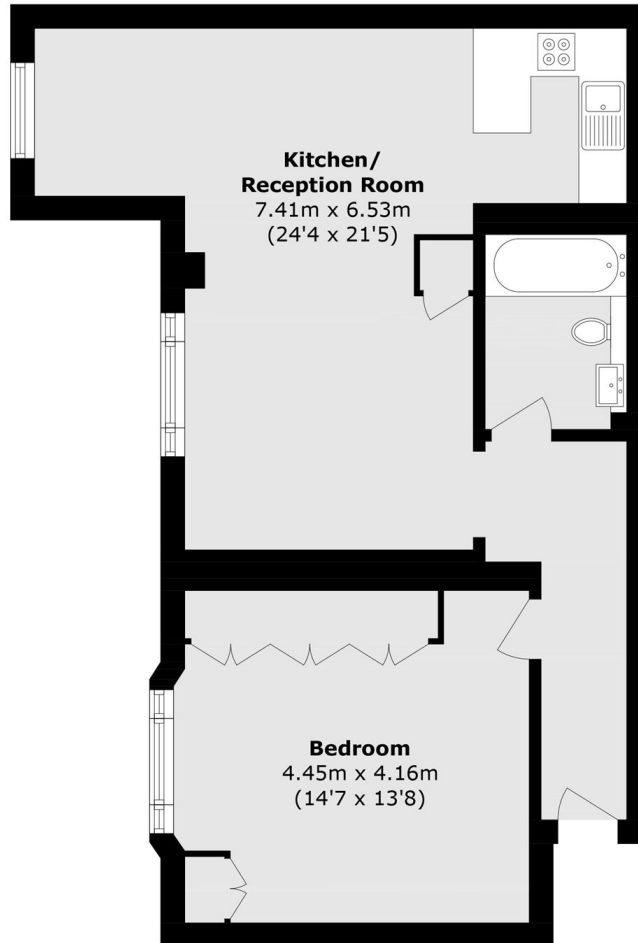
This bright and spacious one-bedroom apartment is situated on the second floor of a stucco-fronted period building, complete with lift access. Located just off Queens Gate in the South Kensington area, the apartment offers a blend of classic charm and modern convenience.

Manson Place is ideally located moments from the cafés, restaurants and transport links South Kensington has to offer. The Natural History Museum, Hyde Park and other London landmarks are also within walking distance.

Features

- Heart of SW7
- No Ongoing Chain
- Lift
- Walking Distance Of Station
- High Ceilings
- Perfect First Time Purchase

Manson Place, London, SW7



Second Floor

Total area (approx): 64.5 sq. m (694.2 sq. ft)