



ASKING PRICE

£980,000

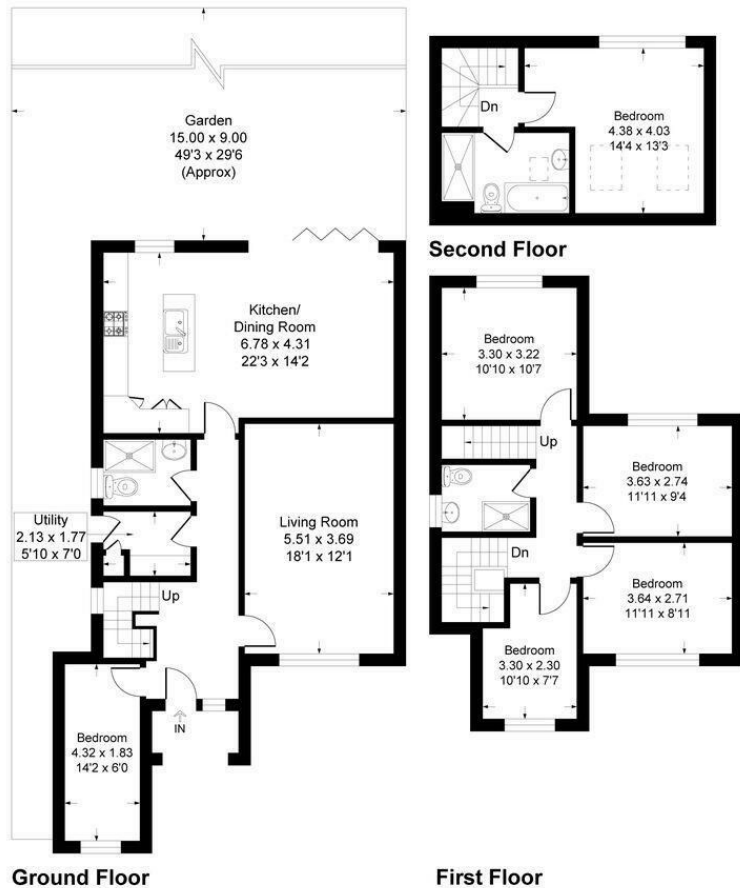
Hilda Vale Road

Orpington, BR6 7AN

EPC RATING: C COUNCIL TAX BAND: E

Hilda Vale Road, BR6

Approximate Gross Internal Area 159.4sq m / 1716 sq ft



This plan is for layout guidance only. Not drawn to scale unless stated. Windows and door openings are approximate. Whilst every care is taken in the preparation of this plan, please check all dimensions, shapes and compass bearings before making any decisions reliant upon them. Produced By Plangix



5

3

2

Energy Efficiency Rating		Current	Potential
Very energy efficient - lower running costs			
(92 plus)	A		
(81-91)	B		
(69-80)	C		
(55-68)	D		
(39-54)	E		
(21-38)	F		
(1-20)	G		
Not energy efficient - higher running costs			
England & Wales		69	79
		EU Directive 2002/91/EC	



Agents Note: Whilst every care has been taken to prepare these particulars, they are for guidance purposes only. All measurements are approximate and are for general guidance purposes only and whilst every care has been taken to ensure their accuracy, they should not be relied upon and potential buyers/tenants are advised to recheck the measurements



OFFICE ADDRESS

1 Chatsworth Parade
Kent
BR5 1EF

OFFICE DETAILS

01689 806 770
infopw@sinclairhammelton.co.uk