



## Scott Ellis Gardens, NW8

£611 Per week

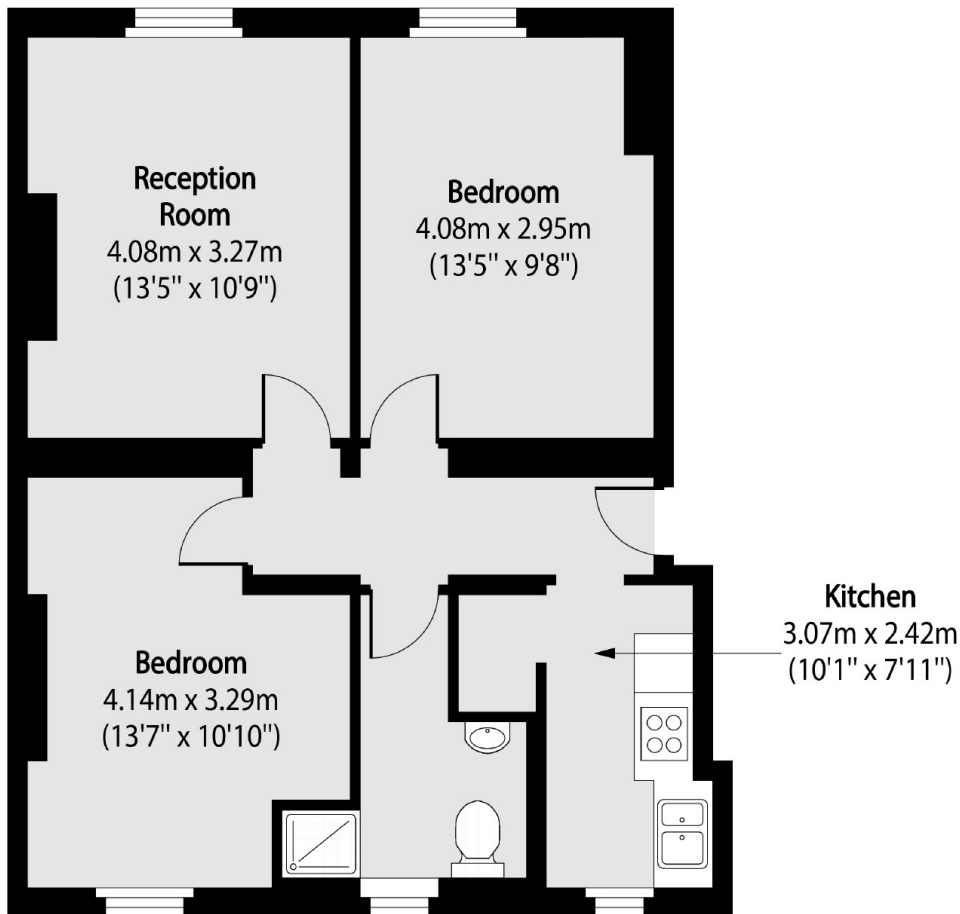
A spacious two double bedroom apartment in a mansion block close to Lords Cricket ground. Bright reception room, separate kitchen, two double bedrooms and family bathroom. Ideal for a small family, couple or two sharers.

Scott Ellis Gardens is located a short distance to St Johns Wood underground station (Jubilee Line) and local shops, restaurants and cafés on St Johns Wood High Street.

### Features

Two Double Bedrooms  
Bright Reception Room  
Separate Kitchen  
Ground Floor Apartment  
Great Location  
Furnished

# Scott Ellis Gardens, London, NW8



Total area (approx): 56.78 sq m (611 sq. ft)