

Flat 4, Meadow Court Hackness Road, Chorlton Green, Manchester, M21 9HH



**JP&Brimelow**  
ESTATE AGENTS

# Offers In The Region Of £175,000

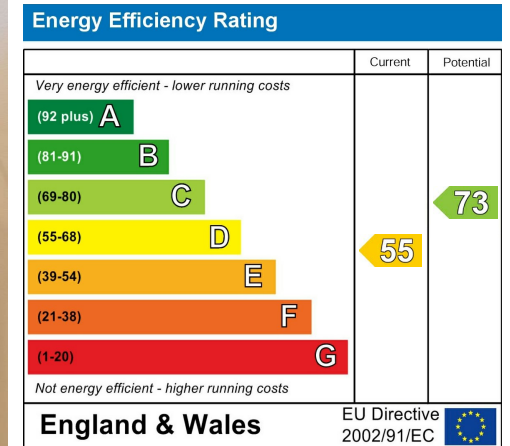


\*\*\*VIDEO TOUR AVAILABLE\*\*\* A spacious and well-kept, ONE DOUBLE BEDROOM, ground floor apartment, situated in this highly popular purpose-built development in Chorlton off Kingshill Road. Set in well-maintained landscaped gardens in this fantastic residential location. Within walking distance to all of Chorlton Green's amenities on Beech Road, Chorlton Nature Reserve and Chorlton Centre with the Metrolink station in either Stretford or Chorlton giving you access into the city centre and Manchester International Airport. The accommodation is well planned and in brief consists of a communal entrance hall with stairs leading to all floors, a private entrance hall with useful storage cupboards, a good-sized lounge, with views into the communal garden, a fitted kitchen, a white three-piece bathroom suite, and a good-sized double bedroom complete with built in wardrobes. The apartment consists of electric heating, an intercom system, off road parking, and well-kept communal gardens.



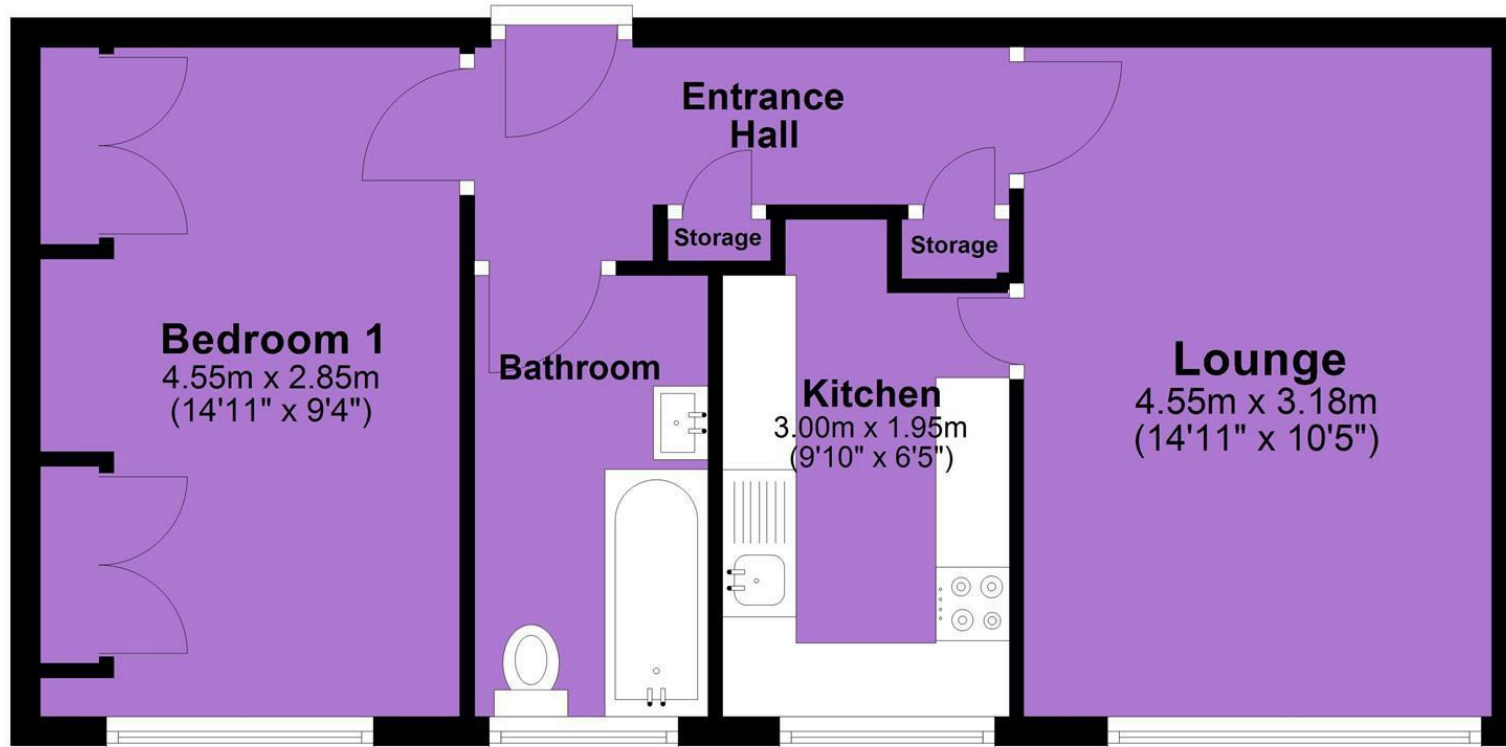


## EPC Chart



Tenure: **Leasehold** Council Tax Band: **A**

# Ground Floor



JP & Brimelow Estate Agents Ltd  
430 Barlow Moor Road, Manchester, M21 8AD  
Tel: 0161 8822233  
E: sales@jpbrimelow.co.uk www.jpandbrimelow.co.uk



**JP & Brimelow**  
ESTATE AGENTS

NOTICE: JP & Brimelow Estate Agents Ltd for themselves and for the vendors or lessors of this property whose agents they are give notice that:

- (i) the particulars are set out as a general outline only for the guidance of intending purchasers or lessees, and do not constitute, nor constitute part of, an offer or contract;
- (ii) all descriptions, dimensions, references to the condition and necessary permissions for use and occupation, and other details are given in good faith and are believed to be correct but any intending purchasers or tenants should not rely on them as statements or representations of fact but must satisfy themselves by inspection or otherwise as to the correctness of each of them;
- (iii) no person in the employment of JP & Brimelow Estate Agents Ltd has any authority to make or give any representation or warranty whatever in relation to this property.

jpandbrimelowstateagents

@jpandbrimelow