



# Great Portland Street, London W1W

Price £610 per week - Furnished





## Description

A beautifully appointed Duplex apartment in a desirable development close to Regent's Street This modern apartment is fitted with a contemporary open-plan kitchen, a double bedroom with built-in wardrobes, and a modern bathroom suite. The apartment also features contemporary furniture throughout, wooden flooring, ample storage, and secondary glazing.

Great Portland Street is conveniently located with a variety of transport links such as Oxford Circus, Goodge Street Station, and Great Portland Street. This fabulous location also offers amazing choice of restaurants, bars as well as shopping facilities all within a short stroll.

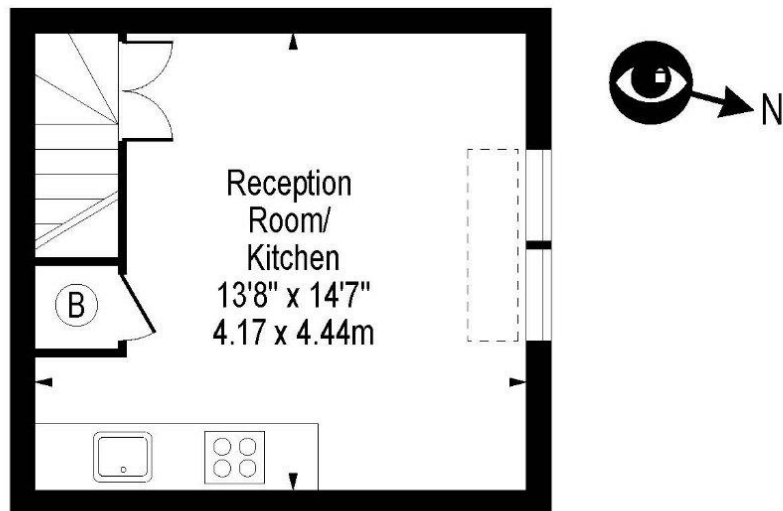
Council tax band: D. Rent is payable on a monthly basis and you may be required to pay more than a month's rent in advance, depending on your circumstances. You will be required to pay a 1 week holding deposit following a successful offer. Tenancies with annual rents up to £50,000 will require a 5 weeks' security deposit, while those exceeding this threshold will require a 6 weeks' deposit. Utility bills, council tax, telephone line and broadband are not included in the rent. As well as paying the rent, you may also be required to make some additional permitted payments. If your tenancy does not qualify as an AST, additional fees may apply. Please visit [jll.co.uk/fees](http://jll.co.uk/fees) for details of fees that may be payable when renting a property. To check broadband and mobile phone coverage please visit Ofcom here [ofcom.org.uk/phones-telecoms-and-internet/advice-for-consumers/advice/ofcom-checker](http://ofcom.org.uk/phones-telecoms-and-internet/advice-for-consumers/advice/ofcom-checker)

- Available Now
  - Duplex Apartment
  - Secondary Glazing
  - Period Features
  - Open-Plan Kitchen
  - Wooden Flooring
  - Furnished
  - Period Features
  - Council tax: Band D
  - Deposit amount: £3,050
-

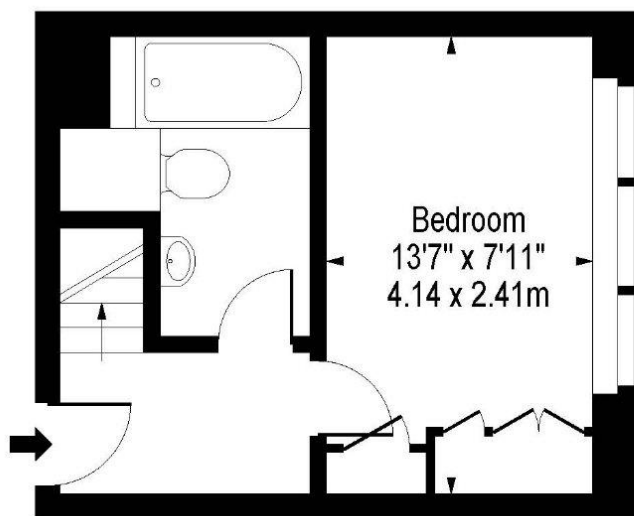
# Floorplan

430 sq ft | 40 sq m

## Great Portland Street, W1W 7LN



Second Floor



First Floor

Approx Gross Internal Area 430 Sq Ft - 39.95 Sq M