



Clements estate agents



Adeyfield Road, Hemel Hempstead, HP2 5GU Offers In Excess Of £220,000

Situated in the sought after development Thorn Mead is this well presented second floor purpose built flat which is being sold with the benefit of NO UPPER CHAIN. Boasting two bedrooms, ensuite and Juliette balcony to master bedroom, open plan lounge/modern fitted kitchen, gas central heating, double glazing and residents parking.

Located within easy reach of Hemel Hempstead town centre with all of its shopping, restaurant, entertainment and travel facilities, Queens Square, the Historic Old Town, local parks and schools and the M1, M25 and A41 road links.

Welcome to this charming second-floor flat located in the desirable development of Thorn Mead in Adeyfield. This purpose-built apartment offers a comfortable living space of 614 square feet, making it an ideal choice for individuals or small families seeking a modern home.

The flat features two well-proportioned bedrooms, with the master bedroom boasting an ensuite bathroom and a delightful Juliette balcony, perfect for enjoying fresh air and natural light. The open-plan lounge and modern fitted kitchen create a spacious and inviting atmosphere, ideal for both relaxation and entertaining guests.

With gas central heating and double glazing throughout, you can enjoy a warm and cosy environment during the colder months. Additionally, residents will benefit from dedicated parking, providing convenience and peace of mind.

This property is not only well-appointed but also situated in a friendly community, making it a wonderful place to call home. Whether you are looking to buy or rent, this flat presents an excellent opportunity to enjoy comfortable living in a sought-after location. Do not miss the chance to make this lovely apartment your own.

Communal Hall

Entrance Hall



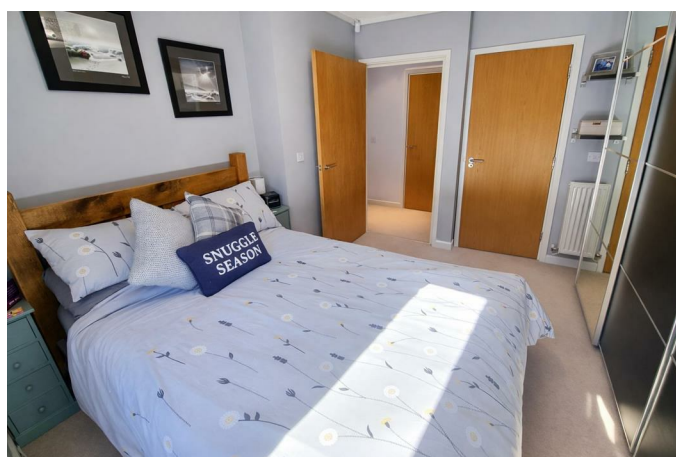
Open Plan Lounge/Fitted Kitchen 15'7 max x 15'0 max (4.75m max x 4.57m max)



Modern Fitted Kitchen



Bedroom One 11'4 x 10'8 (3.45m x 3.25m)



En Suite



Bedroom Two 10'8 x 9'5 (3.25m x 2.87m)

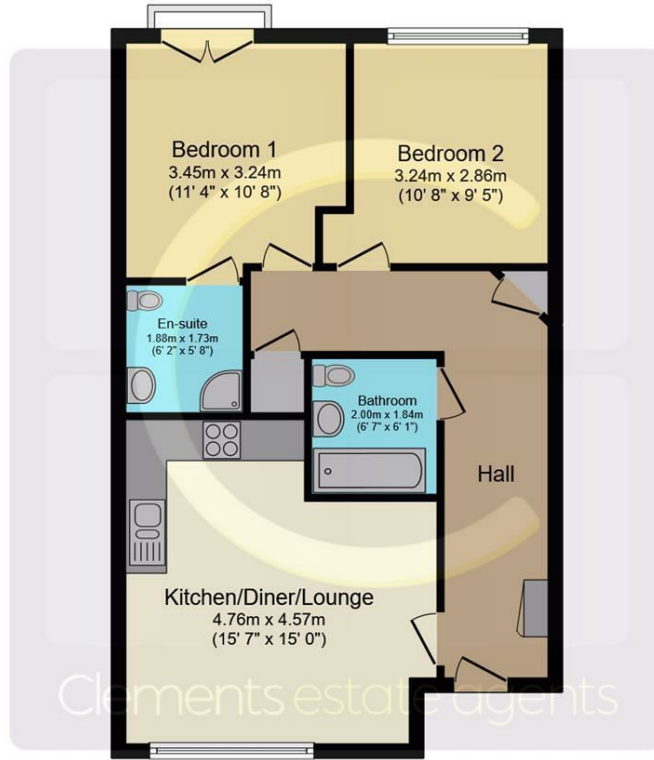


Bathroom



Residents Parking

Floor Plan



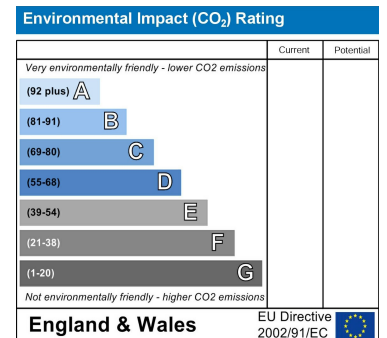
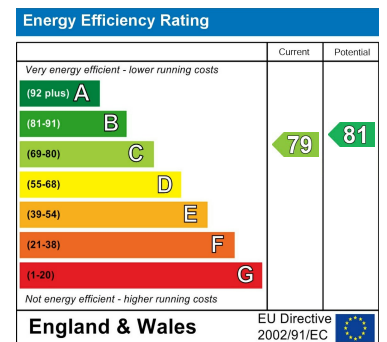
Floor Plan

This floor plan is for illustrative purposes only. It is not drawn to scale. Any measurements, floor areas (including any total floor area), openings and orientations are approximate. No details are guaranteed, they cannot be relied upon for any purpose and do not form any part of any agreement. No liability is taken for any error, omission or misstatement. A party must rely upon its own inspection(s). Powered by www.Propertybox.io

Area Map



Energy Efficiency Graph



These particulars, whilst believed to be accurate are set out as a general outline only for guidance and do not constitute any part of an offer or contract. Intending purchasers should not rely on them as statements of representation of fact, but must satisfy themselves by inspection or otherwise as to their accuracy. No person in this firm's employment has the authority to make or give any representation or warranty in respect of the property.