

## Whittaker Street, SW1W

£550 Per week

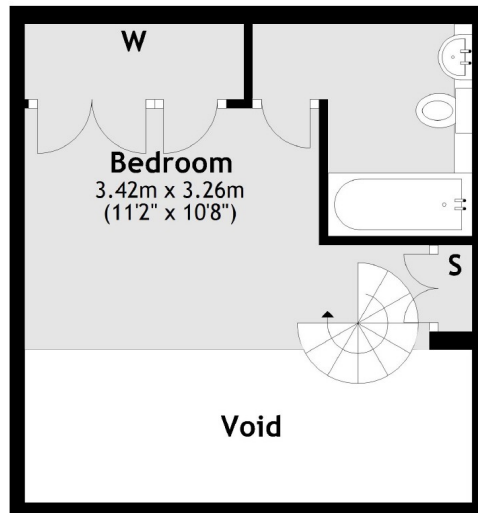
A unique one bedroom split level apartment located in a quiet Mews in Chelsea, just a short walk to Sloane Square Station. Double height ceilings and windows makes this property a must see.

Close to Sloane Square and the King's Road with a wide variety of shops, cafés and restaurants including, Partridge's, Waitrose supermarket, Peter Jones and Restaurant Gordon Ramsey.

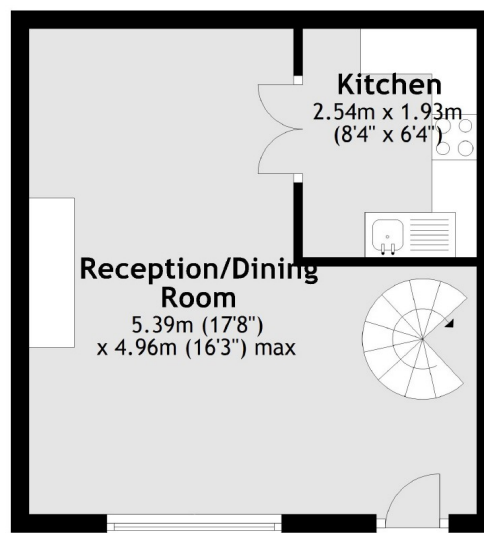
### Features

- One Bedroom
- Split Level
- Mews Location
- First Floor
- In Built Storage
- Short Walk To Sloane Square

Whittaker Street,  
London, SW1W



Mezzanine



First Floor

Total area: approx. 43.7 sq. metres (470.0 sq. feet)

## Contact

To arrange a viewing call our office on the number below or visit our website.



Energy Rating: C. We aim to make our particulars both accurate and reliable. However they are not guaranteed; nor do they form part of an offer or contract. If you require clarification on any points then please contact us, especially if you're traveling some distance to view. Please note that appliances and heating systems have not been tested and therefore no warranties can be given as to their good working order.