



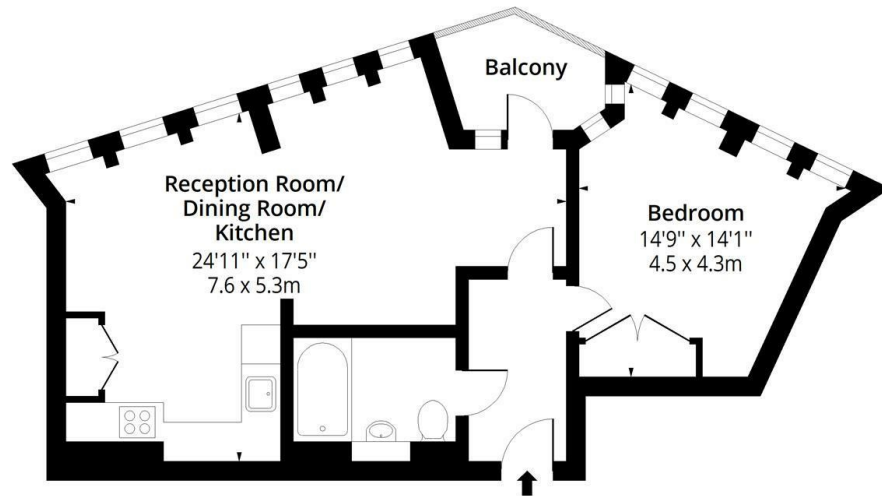
## 46 Ceramic Building 87b Newington Causeway, London, SE1

£2,750

- One Double Bedroom
- High Floor
- Furnished
- Day Porter

## Ceramic Building, Newington Causeway, SE1

Approx. Gross Internal Area 578 Sq Ft - 53.70 Sq M  
 Approx. Gross Balcony Area 39 Sq Ft - 3.62 Sq M



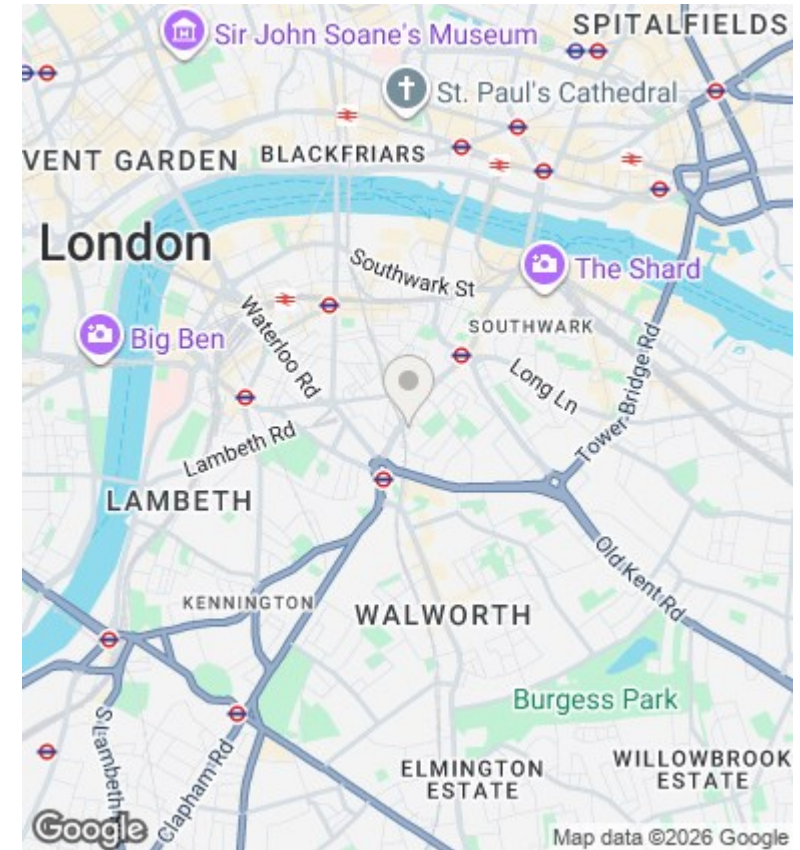
### Twenty Third Floor

Floor Area 578 Sq Ft - 53.70 Sq M



Measured according to RICS IPMS2. Floor plan is for illustrative purposes only and is not to scale. Every attempt has been made to ensure the accuracy of the floor plan shown, however all measurements, fixtures, fittings and data shown are an approximate interpretation for illustrative purposes only. 1 sq m = 10.76 sq feet.  
 ipaplus.com

Date: 12/9/2023



## Directions

## Viewings

Viewings by arrangement only. Call 0208 075 4927 to make an appointment.

## Council Tax Band

D

## EPC Rating:

Energy Efficiency Rating		
	Current	Potential
<i>Very energy efficient - lower running costs</i>		
(92 plus) <b>A</b>		
(81-91) <b>B</b>		
(69-80) <b>C</b>		
(55-68) <b>D</b>		
(39-54) <b>E</b>		
(21-38) <b>F</b>		
(1-20) <b>G</b>		
<i>Not energy efficient - higher running costs</i>		
<b>England &amp; Wales</b>	EU Directive 2002/91/EC	