



Cinder Road
Somercotes Alfreton



Property Description

Ideally located for access to the A38 and M1 motorway road links and being in walking distance of local schools, parks and shops is this well maintained and presented semi-detached home of which viewing is recommended. Internally the spacious accommodation has reception hall, breakfast kitchen lounge and conservatory. To the first floor are three bedrooms and family bathroom with four piece suite. Externally, the front of the property has vehicle standing space for a number of cars and in turn leads to the integral garage. The rear garden is laid to lawn with fence surround and decking. The property has double glazed windows and a gas heating system. Viewing is recommended.

Ground Floor

Reception Hall

Having complementary tiled floor and stairs off to first floor accommodation.

Kitchen

Fitted with a range of wall units having glazed display cabinets, base units with complementary work surfaces over incorporating a single drainer stainless steel sink unit with mixer tap. Integrated four ring stainless steel gas hob and electric oven with extractor hood over. Standing space for a

freestanding fridge and freezer, plumbing for the automatic washing machine and wall mounted gas heating boiler. Complementary tiled splashbacks and flooring. Radiator and a double glazed window overlooking the front elevation.

Lounge

The focal point of this room is a feature Adam style fire surround with complementary backdrop incorporating an electric fire. Radiator, ceiling cover and double doors in turn leads to the conservatory.

Conservatory

This light and spacious conservatory has radiator and french style doors leading out onto the rear garden.

First Floor

Landing

Having access to the available roof space which has been part boarded with power and lighting. The landing provides access to all first floor rooms.

Bedroom One

Double glazed window to the rear and radiator.

Bedroom Two

Double glazed window to the front and radiator.

Bedroom Three

Double glazed window to the rear and radiator. Double wardrobe providing shelving and hanging space having mirror fronts.

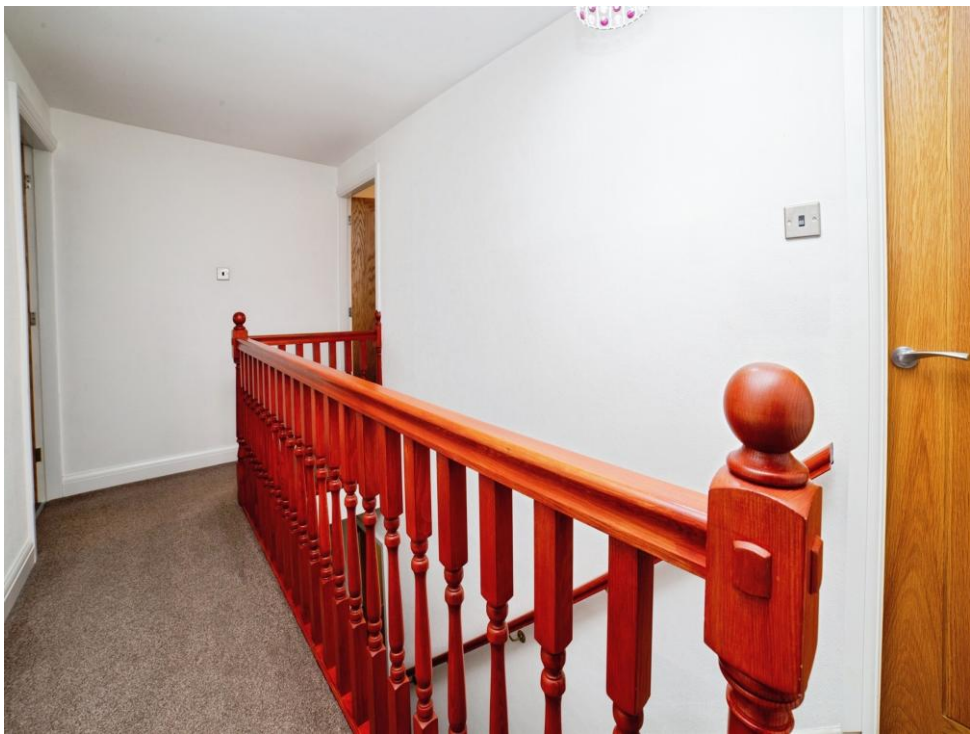
Bathroom

This family bathroom has four piece suite comprising of bath with central tap, corner shower cubicle, pedestal wash hand basin and low flush WC. Recessed lighting, complementary tiling to the walls and heated towel rail. Extractor fan and double glazed window to the front.

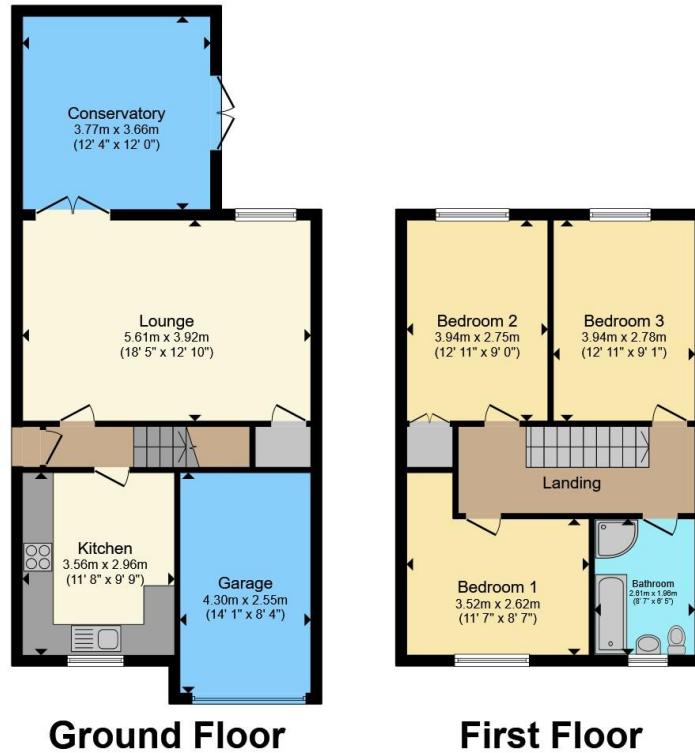
Outside

Externally the front of the property being open plan has a driveway providing vehicle standing space for a number of cars. The front elevation also in turn leads to an integral garage which has up and over door, power and lighting. The enclosed rear garden being a particular feature is a perfect space ideal for entertaining with a decked area, is mainly laid to lawn with mature flower beds and borders.









Total floor area 111.6 m² (1,201 sq.ft.) approx

This floor plan is for illustrative purposes only. It is not drawn to scale. Any measurements, floor areas (including any total floor area), openings and orientation are approximate. No details are guaranteed, they cannot be relied upon for any purpose and they do not form part of any agreement. No liability is taken for any error, omission or misstatement. A party must rely upon its own inspection(s). Powered by www.propertybox.io



To view this property please contact Hall & Benson on

T 01773 521771
E alfreton@hallandbenson.co.uk

22A High Street
 ALFRETON DE55 7BN

EPC Rating: D Council Tax Band: B

view this property online hallandbenson.co.uk/Property/ALF104287

Tenure: Freehold



1. MONEY LAUNDERING REGULATIONS Intending purchasers will be asked to produce identification documentation at a later stage and we would ask for your co-operation in order that there will be no delay in agreeing the sale. 2. These particulars do not constitute part or all of an offer or contract. 3. The measurements indicated are supplied for guidance only and as such must be considered incorrect. Potential buyers are advised to recheck measurements before committing to any expense. 4. We have not tested any apparatus, equipment, fixtures, fittings or services and it is in the buyers interest to check the working condition of any appliances.

Hall & Benson is a trading name of Connells Residential which is registered in England and Wales under company number 1489613, Registered Office is Cumbria House, 16-20 Hockliffe Street, Leighton Buzzard, Bedfordshire, LU7 1GN. VAT Registration Number is 500 2481 05.

See all our properties at www.hallandbenson.co.uk | www.rightmove.co.uk | www.zoopla.co.uk

Property Ref: ALF104287 - 0003