



Varsity Drive, TW1

£299,950

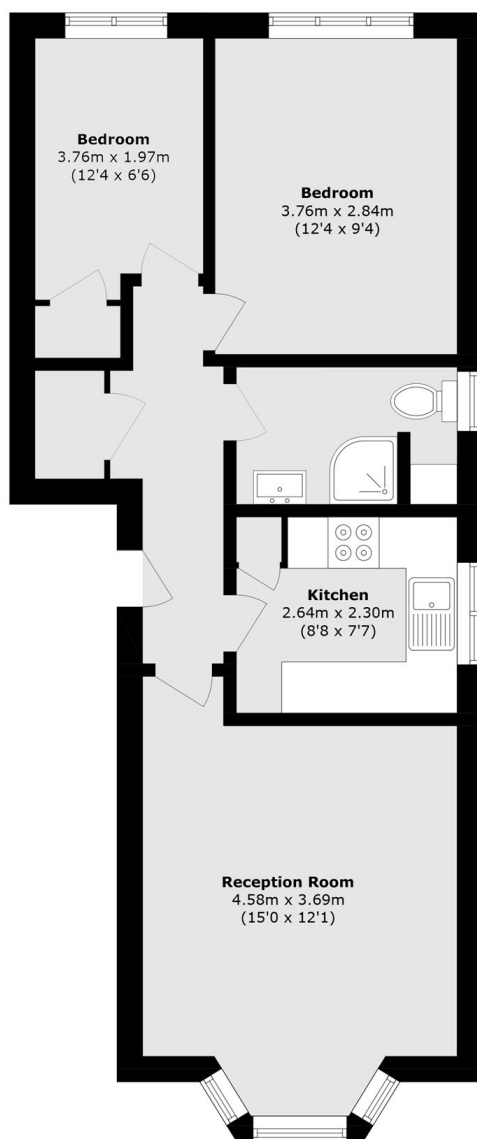
A well-presented and spacious two-bedroom first floor apartment, set within a quiet position in the sought-after Varsity Drive development, offering attractive views and allocated off-street parking.

Varsity Drive is located close to Twickenham mainline station where there is a fast link to London Waterloo. Both Twickenham and Whitton high streets are nearby, where you will find a vast array of shops, pubs and restaurants and there is also easy access onto the A316.

Features

- Two Bedrooms
- Popular Location
- Communal Gardens
- Allocated Parking
- Low Charges
- Easy Access To Station and Shops

Varsity Drive, Twickenham, TW1



Total area (approx.): 52.0 sq. m (559.7 sq. ft)