



Grantham Crescent, Eccles

Manchester



In Excess of £325,000

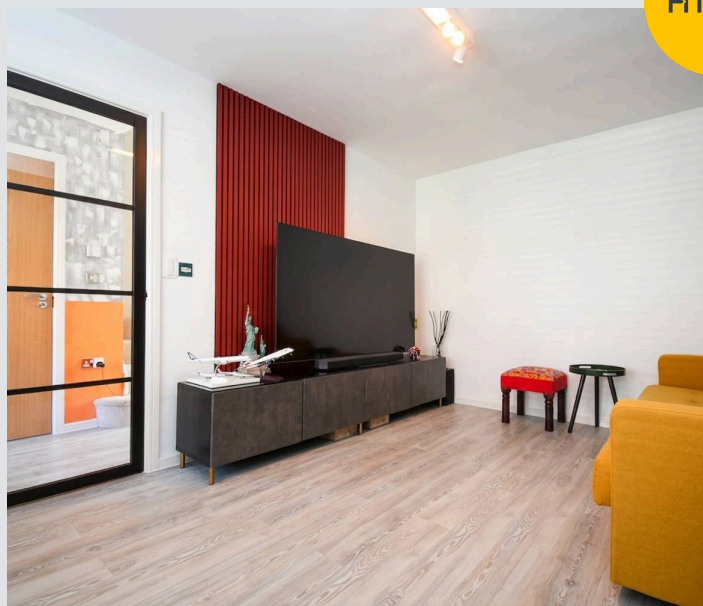
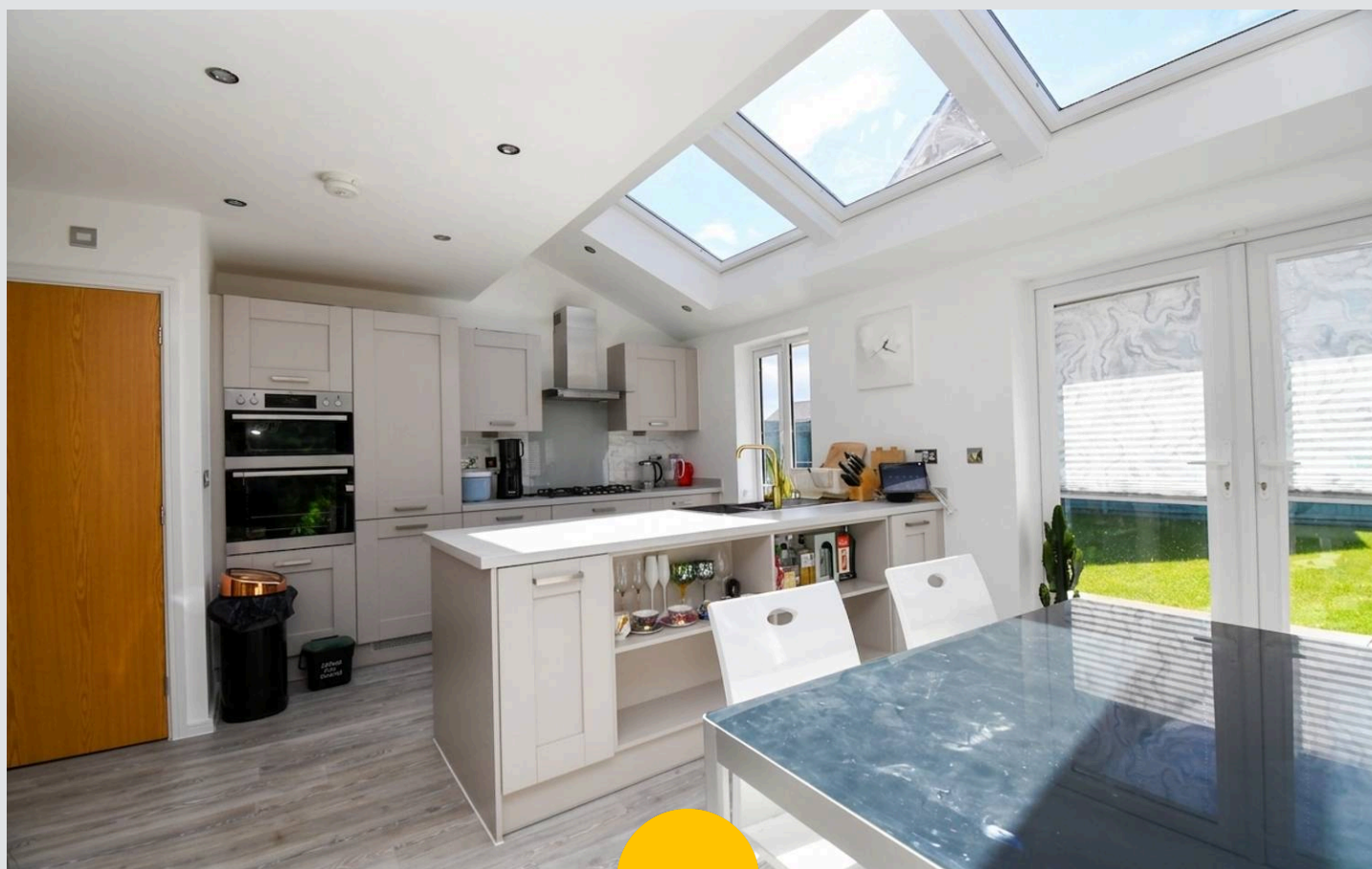
# 49 Grantham Crescent

Eccles, Manchester

Beautifully presented and ready to move straight in, this stunning three bedroom semi detached home is nestled within a peaceful cul-de-sac within the highly sought after Havenswood development, offered to the market freehold with no onward chain. Council Tax band: C

Tenure: Freehold

- Beautifully presented three bedroom semi detached situated on a small cul-de-sac within the desirable Havenswood development
- Offered to the market with no chain and a freehold title
- Spacious family Lounge
- Fitted kitchen and dining space flooded with natural light and a separate utility cupboard
- Three bedrooms to the first floor
- Four piece bathroom suite and guest WC
- Driveway providing offer parking for multiple cars
- Larger than most sundrenched garden with porcelain tile patio
- The perfect first standby or family home located close to highly sought after schools
- Surrounded by excellence, amenities and transport links all just a short walk from the property



**Entrance Hallway**

**Lounge**

15' 0" x 9' 9" (4.57m x 2.97m)

**Kitchen Diner**

17' 5" x 16' 2" (5.31m x 4.93m)

**Downstairs W.C.**

6' 1" x 3' 1" (1.85m x 0.94m)

**Landing**

**Bedroom One**

11' 1" x 8' 7" (3.38m x 2.62m)

**Bedroom Two**

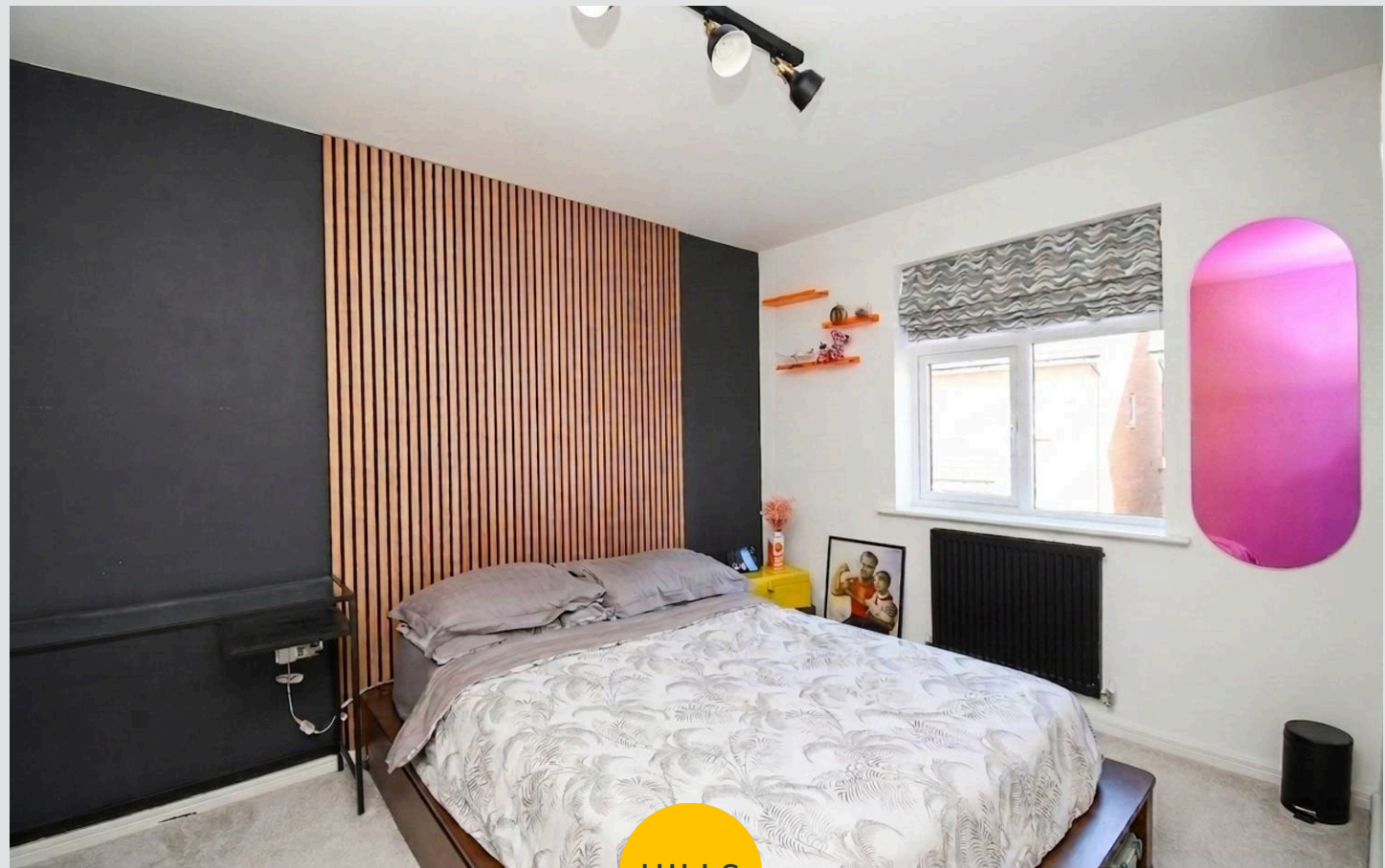
10' 0" x 8' 7" (3.05m x 2.62m)

**Bedroom Three**

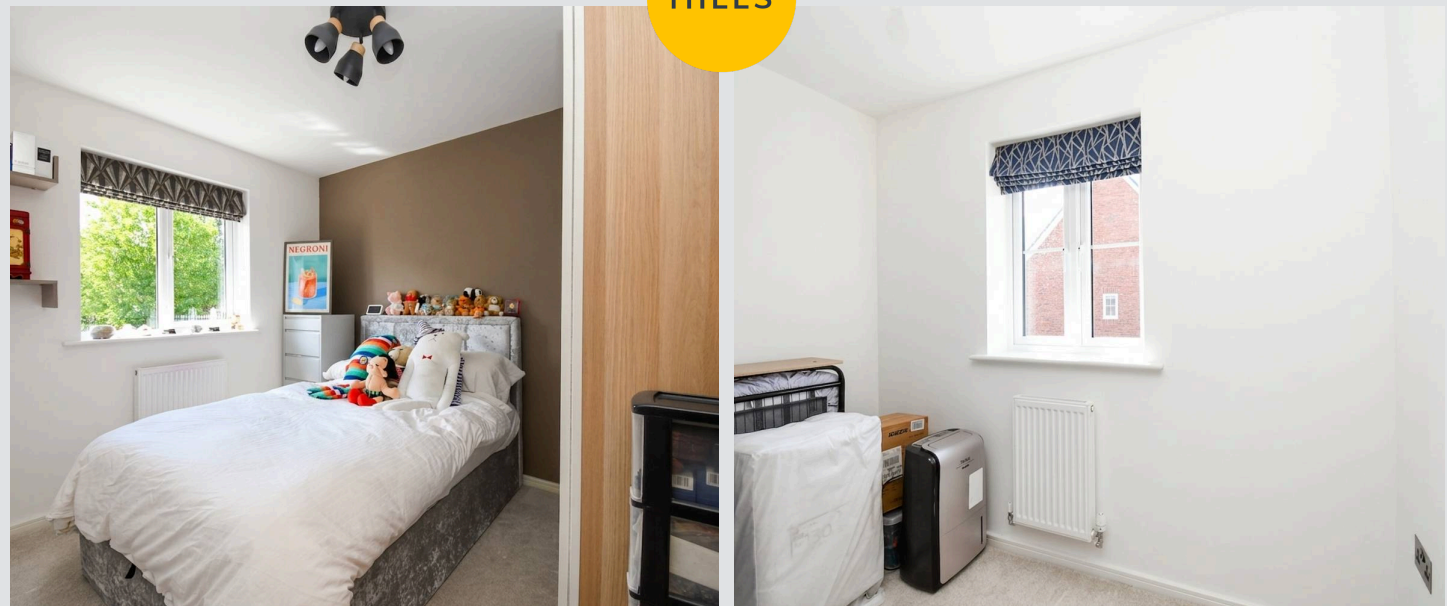
8' 4" x 6' 4" (2.54m x 1.93m)

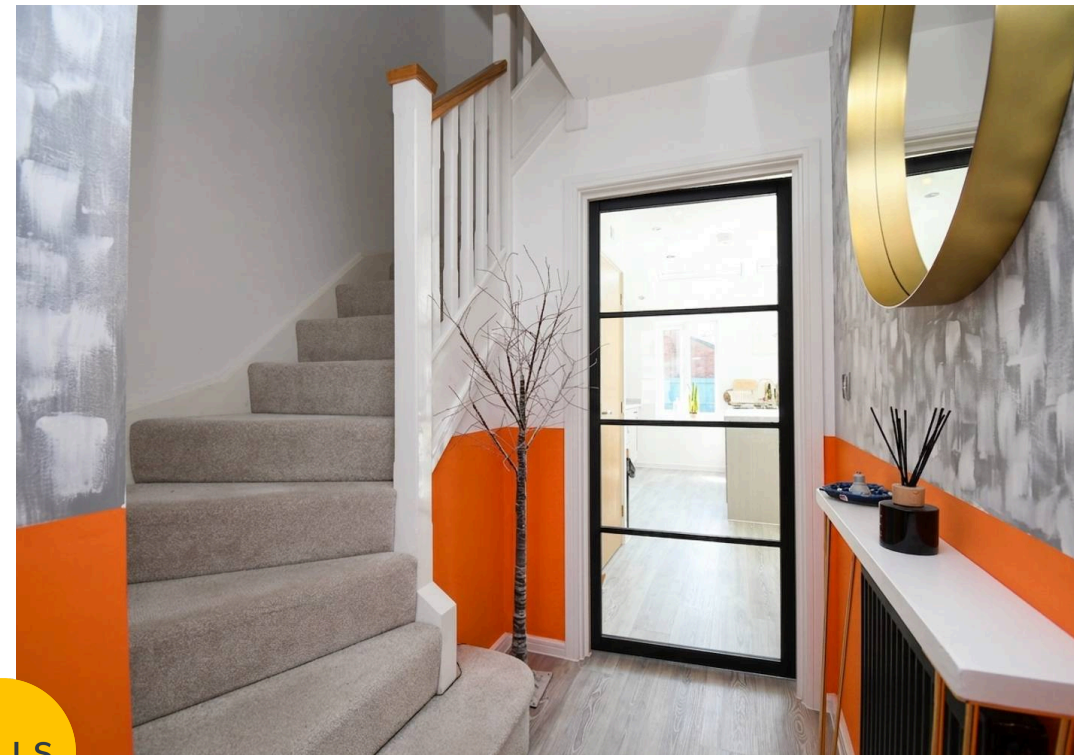
**Bathroom**

8' 3" x 6' 1" (2.52m x 1.85m)

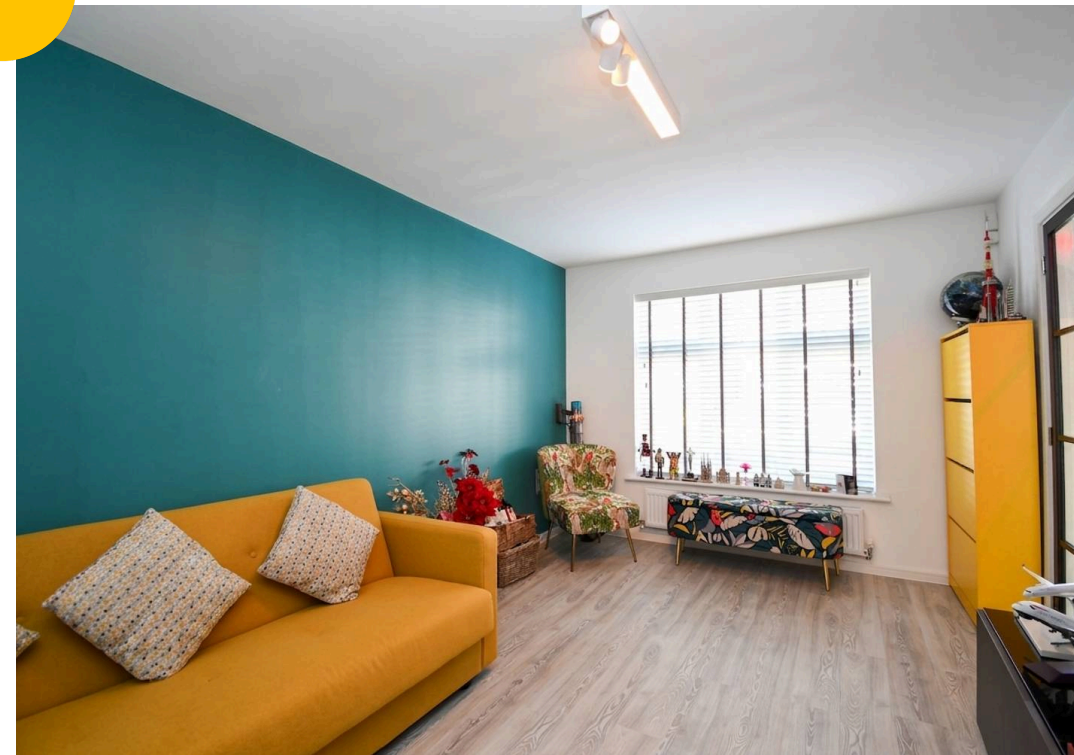


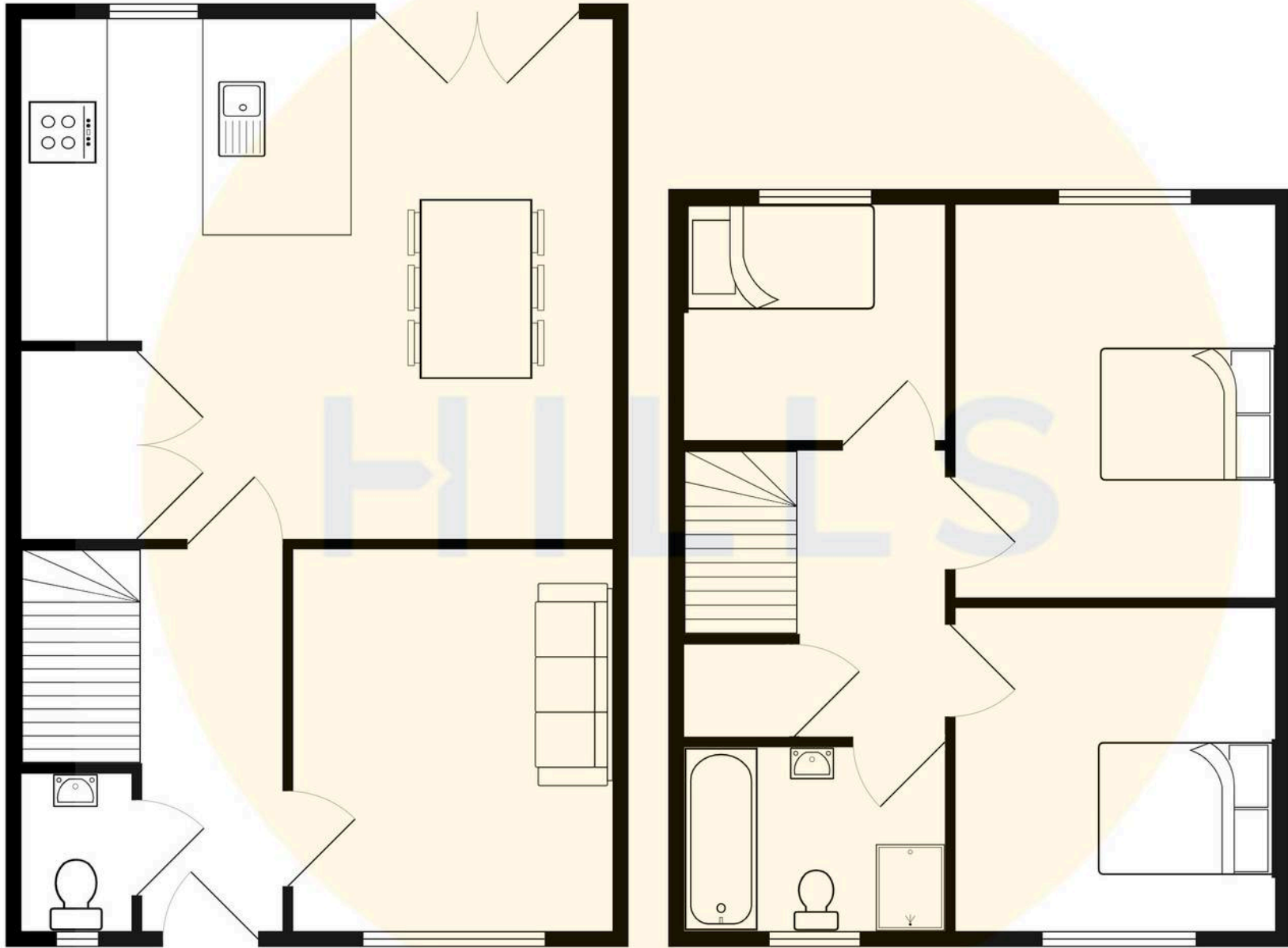
HILLS





HILLS







## Hills | Salfords Estate Agent

Hills Residential, Sentinel House Albert Street - M30 0SS

0161 707 4900

[sales@hills.agency](mailto:sales@hills.agency)

[www.hills.agency/](http://www.hills.agency/)



By law, we are required to conduct anti-money laundering checks on all potential buyers and sellers. In line with HMRC guidelines, our trusted partner, Coadjute, will securely manage these checks on our behalf. A non-refundable fee of £45 + VAT per person will apply, and Coadjute will handle the payment. Once an offer is accepted, Coadjute will send a secure link for you to complete the biometric checks. These checks must be completed before we can send the memorandum of sale to all parties. PLEASE NOTE: The Agent has not tested any equipment, fixtures, fittings or services so cannot verify that they are in working order or fit for the purpose. References to the properties tenure are based on information supplied by the seller. You are advised to check the availability of this property before travelling any distance to view. Every effort has been made to ensure these particulars are correct and not misleading but their accuracy is not guaranteed nor do they form part of any contract.